



Western Michigan University
ScholarWorks at WMU

Legacy Scout Tickets from Pure Oil Company

8-20-2021

**MGRRE_PureOilScoutTickets_Nicholson, L et
al_1_21073107710000**

MGRRE

Western Michigan University

Follow this and additional works at: <https://scholarworks.wmich.edu/pure>



Part of the Geology Commons

WMU ScholarWorks Citation

MGRRE, "MGRRE_PureOilScoutTickets_Nicholson, L et al_1_21073107710000" (2021). *Legacy Scout Tickets from Pure Oil Company*. 3637.

<https://scholarworks.wmich.edu/pure/3637>

This Document is brought to you for free and open access via ScholarWorks at WMU. It has been accepted for inclusion in Legacy Scout Tickets from Pure Oil Company by an authorized administrator of ScholarWorks at WMU. See the National Digital Catalogue - Science Base Catalogue for more collections submitted by MGRRE.



MGRRE_PureOilScoutTickets_Nicholson, L et al_1_21073107710000

API 21073107710000

Permit Number 10771

Lease Name Nicholson, L et al

Well Number 1

County Isabella

Township 14N

Range 05W

Section 18

2021 DEQ or Pure co_name Michigan Consolidated Gas Company

Pure Number 957

Latitude 43.60396

Longitude -84.95418

THE PURE OIL COMPANY LOCATION REPORT

Date July 26, 1944

A.F.E. No. _____

Division Mich. Producing District _____

Lease L. Nicholson et al
L. Nicholson, et al

Acres _____ Lease No. _____ Elevation _____ Well No. 1 (Serial No. 957)

Quadrangle C E¹/₂ W¹/₂ E¹/₂ Sec. 18 Twp. 14 N Rge. 5 W Twp. Deerfield

Survey _____ County Isabella State Michigan

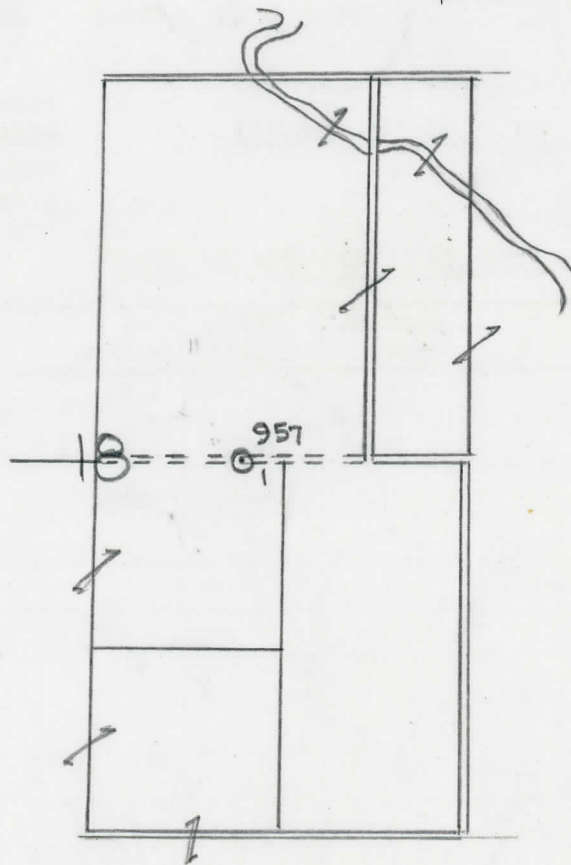
Operator C. W. Collin Map Deerfield Twp. - Isabella Co.
C. W. Collin Deerfield Township, Isabella County

<u>1320</u>	<u>1320</u>	Feet from North Line of Lease
_____	_____	" " East " " "
<u>1320</u>	<u>1320</u>	" " South " " "
<u>990</u>	<u>990</u>	" " West " " "
<u>0</u>	<u>0</u>	Feet from North Line of Section
_____	_____	" " East " " "
<u>0</u>	<u>0</u>	" " South " <u>1/4</u> "
<u>990</u>	<u>990</u>	" " West " " "

LEGEND

- Location
- ☀ Gas Well
- Oil Well
- ☀ Gas - Distillate Well
- or ○ Dry Hole
- Dry Showing Oil
- Dry Showing Gas
- ⊗ Abandoned Location
- ☀ or ☀ Abandoned Gas Well
- or ● Abandoned Oil Well
- or ○ Input Well

Handwritten notes:
8' 45" W
1 1/8" W
8" W
Sp 7-20-44



Remarks: Per trans from Isabella #951
Permit transferred from Isabella #951.

Scale _____

Submitted by RN
Civil Engineer

Approved by _____
Division Manager

Approved by _____
Vice-President - General Manager

