



Western Michigan University  
ScholarWorks at WMU

---

Legacy Scout Tickets from Pure Oil Company

---

8-20-2021

**MGRRE\_PureOilScoutTickets\_Cole, Cora E\_1\_21073109490000**

MGRRE

*Western Michigan University*

Follow this and additional works at: <https://scholarworks.wmich.edu/pure>



Part of the Geology Commons

---

#### **WMU ScholarWorks Citation**

MGRRE, "MGRRE\_PureOilScoutTickets\_Cole, Cora E\_1\_21073109490000" (2021). *Legacy Scout Tickets from Pure Oil Company*. 3638.

<https://scholarworks.wmich.edu/pure/3638>

This Document is brought to you for free and open access via ScholarWorks at WMU. It has been accepted for inclusion in Legacy Scout Tickets from Pure Oil Company by an authorized administrator of ScholarWorks at WMU. See the National Digital Catalogue - Science Base Catalogue for more collections submitted by MGRRE.



---

**MGRRE\_PureOilScoutTickets\_Cole, Cora E\_1\_21073109490000**

API 21073109490000

Permit Number 10949

Lease Name Cole, Cora E

Well Number 1

County Isabella

Township 14N

Range 04W

Section 34

2021 DEQ or Pure co\_name Sohio Petroleum Company

Pure Number 958

Latitude 43.56157

Longitude -84.77984

# THE PURE OIL COMPANY

## LOCATION REPORT

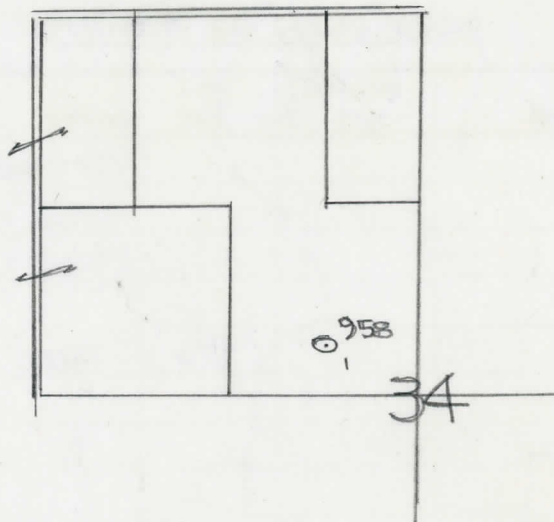
Date August 2, 1944 A.F.E. No. \_\_\_\_\_  
 Division Mich. Producing District \_\_\_\_\_ Lease Cora E. Cole  
 Acres \_\_\_\_\_ Lease No. \_\_\_\_\_ Elevation \_\_\_\_\_ Well No. 1 (Serial No. 958)  
 Quadrangle C S 1/2 SE NW Sec. 34 Twp. 14 N Rge. 4 W ~~XEDX~~ Union  
 Survey \_\_\_\_\_ County Isabella State Michigan  
 Operator Sohio Petroleum Company Map Union Township, Isabella County

Feet from North Line of Lease	
<u>660</u>	660 " " East " " "
<u>330</u>	330 " " South " " "
<u>660</u>	660 " " West " " "
Feet from North Line of Section	
<u>660</u>	660 " " East " <u>1/4</u> "
<u>330</u>	330 " " South " " "
	" " West " " "

**LEGEND**

- Location
- ☀ Gas Well
- Oil Well
- ☀ Gas - Distillate Well
- ⊘ or ○ Dry Hole
- Dry Showing Oil
- ☀ Dry Showing Gas
- ⊘ Abandoned Location
- ☀ or ☀ Abandoned Gas Well
- or ● Abandoned Oil Well
- or ○ Input Well

*my*



Scale \_\_\_\_\_

Remarks: \_\_\_\_\_  
 \_\_\_\_\_  
 \_\_\_\_\_

Submitted by BN Civil Engineer Approved by \_\_\_\_\_ Division Manager  
 Approved by \_\_\_\_\_ Vice-President - General Manager

LOCATION REPORT  
THE STATE OF MICHIGAN

COMPLETION RECORD OF WELLS DRILLED BY OTHER OPERATORS

Michigan Producing Division

Date October 18, 1944 No. 958  
 State Mich. County Isabella Twp. Union Sec. 34 Twp. 14 N Rge. 4 W  
 Well No. 1 (County No.) 958 Farm Cora E. Cole Acres \_\_\_\_\_  
 Operator Sohio Petroleum Co. Information secured From Scouting Dept.  
 Date well started 8-30-44 Date well completed 9-29-44 Elevation 841.8

PRODUCTION BOARD

1st 24 hours natural Dry Hole  
 2nd 24 hours natural \_\_\_\_\_  
 Date of shot \_\_\_\_\_ No. of quarts \_\_\_\_\_ From \_\_\_\_\_ to \_\_\_\_\_ From \_\_\_\_\_ to \_\_\_\_\_  
 Date of acid \_\_\_\_\_ No. of gallons \_\_\_\_\_  
 1st 24 hours after acid shot \_\_\_\_\_  
 2nd 24 hours after acid shot \_\_\_\_\_

FORMATION AND CASING RECORD

Formation	Top	Bottom	Top Pay	Bottom Pay	Remarks	Casing	
						Size	Set at
Brown Dolomite	1301'	SLM (-429)				10"	511'
Mich. Stray	1400'	(-558)				8-5/8"	864'
Marshall	1492'	(-650)					
Total Depth		1535'	(-693)				

Remarks 1306 = 08 SLM Lost tools in hole at 1535' - could not recover - abandoned well.

Signed Dean C. Shackelford