



Western Michigan University
ScholarWorks at WMU

Legacy Scout Tickets from Pure Oil Company

8-20-2021

MGRRE_PureOilScoutTickets_Rodgers, John_1_21073110920000

MGRRE

Western Michigan University

Follow this and additional works at: <https://scholarworks.wmich.edu/pure>



Part of the Geology Commons

WMU ScholarWorks Citation

MGRRE, "MGRRE_PureOilScoutTickets_Rodgers, John_1_21073110920000" (2021). *Legacy Scout Tickets from Pure Oil Company*. 3648.

<https://scholarworks.wmich.edu/pure/3648>

This Document is brought to you for free and open access via ScholarWorks at WMU. It has been accepted for inclusion in Legacy Scout Tickets from Pure Oil Company by an authorized administrator of ScholarWorks at WMU. See the National Digital Catalogue - Science Base Catalogue for more collections submitted by MGRRE.



MGRRE_PureOilScoutTickets_Rodgers, John_1_21073110920000

API 21073110920000

Permit Number 11092

Lease Name Rodgers, John

Well Number 1

County Isabella

Township 16N

Range 06W

Section 29

2021 DEQ or Pure co_name Mid Michigan Gas Storage Company

Pure Number 968

Latitude 43.7437562

Longitude -85.0506091

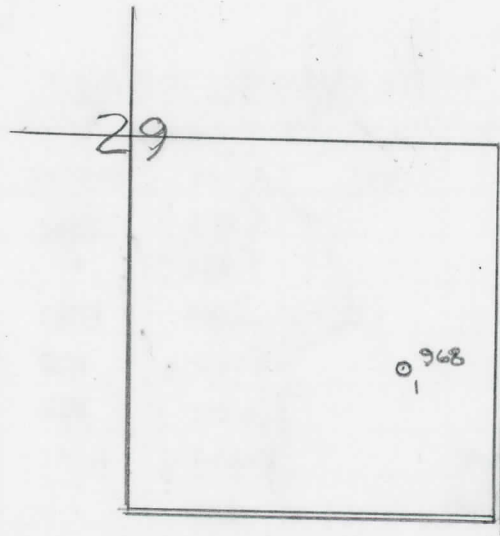
THE PURE OIL COMPANY LOCATION REPORT

Date October 4, 1944 A.F.E. No. _____
 Division Mich. Producing District _____ Lease John Rodgers
 Acres _____ Lease No. _____ Elevation _____ Well No. 1 (Serial No. 968)
 Quadrangle N¹/₂ SE-SE Sec. 29 Twp. 16 N Rge. 6 W ~~X 6600~~ ~~X 6600~~ Coldwater
 Survey _____ County Isabella State Michigan
 Operator Sohio Petroleum Company Map Coldwater Twp. Isabella Co.

Feet from North Line of Lease	
<u>660</u>	<u>660</u>
" "	East " " "
<u>1040</u>	<u>1040</u>
" "	South " " "
" "	West " " "
Feet from North Line of Section	
<u>660</u>	<u>660</u>
" "	East " <u>1/4</u> "
<u>1040</u>	<u>1040</u>
" "	South " " "
" "	West " " "

LEGEND

- Location
- ☀ Gas Well
- Oil Well
- ☀ Gas -- Distillate Well
- ∅ or ○ Dry Hole
- Dry Showing Oil
- ☀ Dry Showing Gas
- ⊗ Abandoned Location
- ☀ or ⊗ Abandoned Gas Well
- or ● Abandoned Oil Well
- ⊗ or ⊗ Input Well



Remarks: _____

Submitted by RN Civil Engineer Approved by _____ Division Manager
 Approved by _____ Vice-President - General Manager

The Pure Oil Company
COMPLETION RECORD OF WELLS DRILLED BY OTHER OPERATORS

Michigan Producing Division

Date November 29, 1944 No. 968
 State Mich. County Isabella Dist. Isabella
 (Serial No.) Twp. Coldwater Sec. 29 Twp. 16 N Rge. 6 W
 Well No. 1 (County No.) 968 Farm John Rodgers Acres
 Operator Sohio Petroleum Company Information secured ~~from~~ Scouting Department
 Date well started 10-20-44 Date well completed 11-24-44 Elevation 1002.2

PRODUCTION BOARD

1st ¹⁵ ~~24~~ hours natural 298 Barrels - open casing.
 2nd 24 hours natural
 Date of shot No. of quarts From To From to
 Date of acid No. of gallons
 shot
 1st 24 hours after acid
 shot
 2nd 24 hours after acid

FORMATION AND CASING RECORD

Formation	Top	Bottom	Top Pay	Bottom Pay	Remarks	Casing	
						Size	Set at
Brown Dolomite	1278	Schl.	(-276)			10"	242
Mich. Stray	1385	"	(-383)			6-5/8"	1698
Marshall	1487	1683	Schl.	(-485)		5-3/16"	3713
Antrim	2532	CTM	(-530)				
Traverse Form.	3125	SLM	(-3125)				
Traverse Lime	3130	"	(-3130)		Show gas 3170-3175.	(-2168)	
					Show oil 3175-3189.	(-2173)	
					Show gas 3220.	(-2218)	
Dundee	3719	(-2717)	3721	(-2719) 3732			
Total Depth		3732	(-2730)				

Remarks 3215' equals 3220' SLM.

Signed D. C. Shackelford