



Western Michigan University
ScholarWorks at WMU

Legacy Scout Tickets from Pure Oil Company

8-20-2021

**MGRRE_PureOilScoutTickets_Cummings,
John_5_21073110930000**

MGRRE
Western Michigan University

Follow this and additional works at: <https://scholarworks.wmich.edu/pure>



Part of the Geology Commons

WMU ScholarWorks Citation

MGRRE, "MGRRE_PureOilScoutTickets_Cummings, John_5_21073110930000" (2021). *Legacy Scout Tickets from Pure Oil Company*. 3649.
<https://scholarworks.wmich.edu/pure/3649>

This Document is brought to you for free and open access via ScholarWorks at WMU. It has been accepted for inclusion in Legacy Scout Tickets from Pure Oil Company by an authorized administrator of ScholarWorks at WMU. See the National Digital Catalogue - Science Base Catalogue for more collections submitted by MGRRE.



MGRRE_PureOilScoutTickets_Cummings, John_5_21073110930000

API 21073110930000

Permit Number 11093

Lease Name Cummings, John

Well Number 5

County Isabella

Township 16N

Range 06W

Section 32

2021 DEQ or Pure co_name Summit Petroleum Corporation

Pure Number 969

Latitude 43.7400447

Longitude -85.0553439

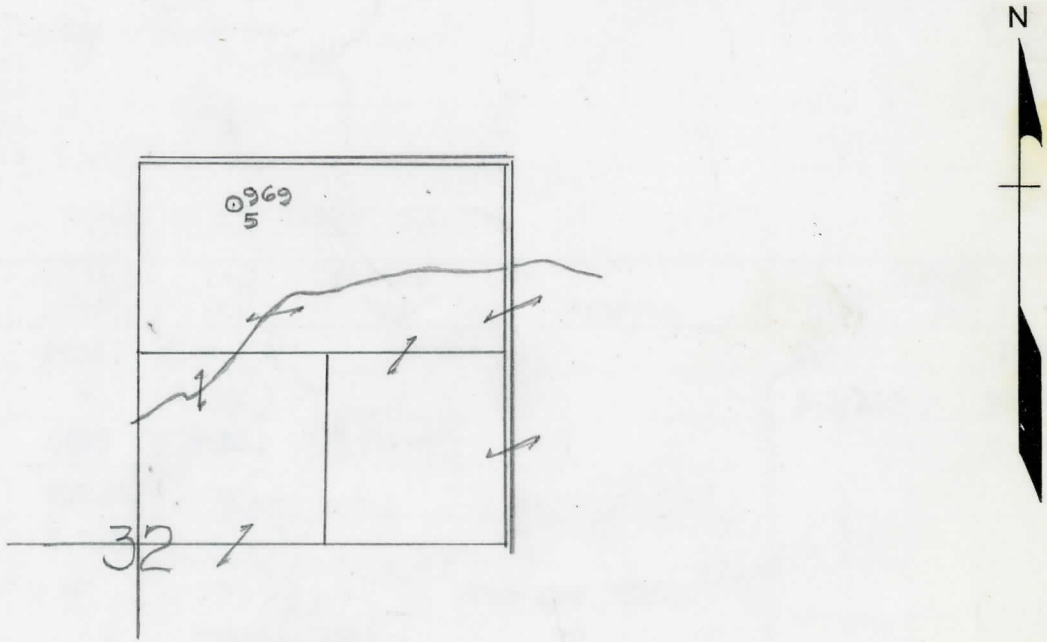
THE PURE OIL COMPANY

LOCATION REPORT

Date October 4, 1944 A.F.E. No. _____
 Division Mich. Producing District _____ Lease John Cummings
 Acres _____ Lease No. _____ Elevation _____ Well No. 5 (Serial No. 969)
 Quadrangle C N 1/2 - NW - NE Sec. 32 Twp. 16 N Rge. 6 W ~~XBING~~ ~~YOTAK~~ Coldwater
 Survey _____ County Isabella State Michigan
 Operator Sohio Petroleum Company Map Coldwater Twp. - Isabella Co.
Sohio Pet. Co. Coldwater Township, Isabella County

330 330 Feet from North Line of Lease
 " " East " " "
660 660 " " South " " "
330 330 Feet from North Line of Section
 " " West " 1/4 "
 " " East " " "
660 660 " " South " " "
 " " West " " "

- LEGEND
- Location
 - ☀ Gas Well
 - Oil Well
 - ☀ Gas - Distillate Well
 - or ○ Dry Hole
 - Dry Showing Oil
 - ☀ Dry Showing Gas
 - Abandoned Location
 - ☀ or ☀ Abandoned Gas Well
 - or ● Abandoned Oil Well
 - or ○ Input Well



Remarks: _____ Scale _____

Submitted by RN Civil Engineer Approved by _____ Division Manager

Approved by _____ Vice-President - General Manager

COMPLETION RECORD OF WELLS DRILLED BY OTHER OPERATORS

Michigan Producing Division

Date November 15, 1944 No. 969
 State Mich. County Isabella Twp. Coldwater Sec. 32 Twp. 16 N Rge. 6 W
 Well No. 5 (Serial No.) 969 Farm John Cummings Acres
 Operator Sohio Petroleum Company Information secured From Scouting Department By
 Date well started 10-7-44 Date well completed 11-6-44 Elevation 1010.0

PRODUCTION BOARD

1st 24 hours natural 408 Barrels
 2nd 24 hours natural
 Date of shot No. of quarts From To From to
 Date of acid No. of gallons
 1st 24 hours after acid shot
 2nd 24 hours after acid shot

FORMATION AND CASING RECORD

Formation	Top	Bottom	Top Pay	Bottom Pay	Remarks	Casing	
						Size	Set at
Brown Dolomite	1285	Schl.	(-275)			1 1/4"	189
Stray	1396	"	(-386)			5-3/16"	3727
Marshall		1695	Schl.	(-685)			
Traverse Form.	3126	D.S.M.	(-2116)				
Traverse Lime	3133	S.L.M.	(-2123)				
Dundee	3727	"	(-2117)	(-2118 1/2)	Show gas 3728 1/2. (-2118 1/2)		
			3728 1/2	3741			
Total Depth		3741	(-2131)				

Remarks 3225' equals 3222' S.L.M.

Signed D. C. Shackelford