



Western Michigan University  
ScholarWorks at WMU

---

Legacy Scout Tickets from Pure Oil Company

---

8-20-2021

**MGRRE\_PureOilScoutTickets\_Mater, Daniel  
H\_1\_21073111590000**

MGRRE  
*Western Michigan University*

Follow this and additional works at: <https://scholarworks.wmich.edu/pure>



Part of the Geology Commons

---

#### **WMU ScholarWorks Citation**

MGRRE, "MGRRE\_PureOilScoutTickets\_Mater, Daniel H\_1\_21073111590000" (2021). *Legacy Scout Tickets from Pure Oil Company*. 3656.  
<https://scholarworks.wmich.edu/pure/3656>

This Document is brought to you for free and open access via ScholarWorks at WMU. It has been accepted for inclusion in Legacy Scout Tickets from Pure Oil Company by an authorized administrator of ScholarWorks at WMU. See the National Digital Catalogue - Science Base Catalogue for more collections submitted by MGRRE.



---

**MGRRE\_PureOilScoutTickets\_Mater, Daniel H\_1\_21073111590000**

API 21073111590000

Permit Number 11159

Lease Name Mater, Daniel H

Well Number 1

County Isabella

Township 15N

Range 03W

Section 2

2021 DEQ or Pure co\_name Oxy USA, Incorporated

Pure Number 976

Latitude 43.71954

Longitude -84.63621

# THE PURE OIL COMPANY

## LOCATION REPORT

Date October 25, 1944

A.F.E. No. \_\_\_\_\_

Division Michigan Producing District \_\_\_\_\_

Lease Daniel H. Mater  
Daniel H. Mater

Acres \_\_\_\_\_ Lease No. \_\_\_\_\_ Elevation \_\_\_\_\_ Well No. 1 (Serial No. 976)

Quadrangle NW-NW-SE Sec. 2 Twp. 15 N 3 W Dist. Denver  
NW NW SE Sec. 2 Twp. 15 N Rge. 3 W Dist. Denver

Survey \_\_\_\_\_ County Isabella State Michigan

Operator Cities Service Oil Co. Map Denver Twp. Isabella Co.  
Cities Service Oil Co. Denver Township, Isabella County

330 330 Feet from North Line of Lease

“ “ East “ “ “

“ “ South “ “ “

330 330 “ “ West “ “ “

330 330 Feet from North Line of Section

“ “ East “ “ “

“ “ South “ “ “

330 330 “ “ West “ “ “

### LEGEND

○ Location

☀ Gas Well

● Oil Well

☀ Gas - Distillate Well

○ or ○ Dry Hole

● Dry Showing Oil

☀ Dry Showing Gas

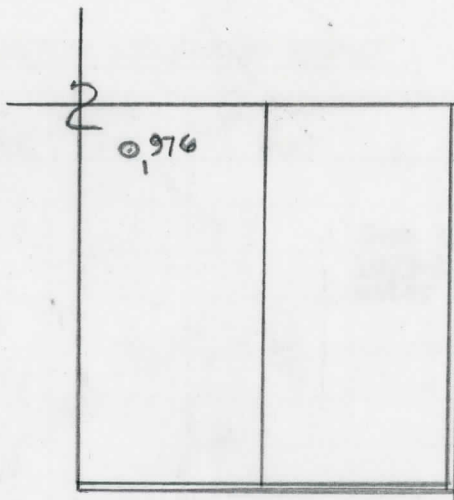
⊗ Abandoned Location

☀ or ⊗ Abandoned Gas Well

● or ● Abandoned Oil Well

● or ○ Input Well

N



Scale \_\_\_\_\_

Remarks: \_\_\_\_\_

Submitted by RN Civil Engineer

Approved by \_\_\_\_\_ Division Manager

Approved by \_\_\_\_\_ Vice-President - General Manager

COMPLETION RECORD OF WELLS DRILLED BY OTHER OPERATORS

Michigan Producing Division

Date December 13, 1944 No. 976  
 State Mich. County Isabella Twp. Denver Sec. 2 Twp. 15 N Rge. 3 W  
 Well No. 1 (Serial No.) 976 Farm Daniel H. Mater Acres  
 Operator Cities Service Oil Company Information secured By Scout Department  
 Date well started 11-3-44 Date well completed 12-11-44 Elevation 761.1

PRODUCTION BOARD

1st 24 hours natural Dry Hole  
 2nd 24 hours natural  
 Date of shot No. of quarts From To From to  
 Date of acid No. of gallons  
 1st 24 hours after acid shot  
 2nd 24 hours after acid shot

FORMATION AND CASING RECORD

Formation	Top	Bottom	Top Pay	Bottom Pay	Remarks	Casing	
						Size	Set at
Brown Dolomite	1132	SLM	(-371)			10"	365
Mich. Stray	1271	(-510)			Show black oil (-512)	8-1/4"	940
					1273-1281; show salt water 1281-1290.	6-5/8"	1521
Marshall	1325	(-564) 1501			(-520)	5-3/16"	3677
Sunbury	2500	(-1739)					
Berea	2521	(-1760)					
Antrim	2547	(-1786)					
Traverse Form.	3000 ?	(-2239)					
Traverse Lime	3029	SLM.	(-2268)				
Alpena	3096	(-2335)					
Dundee	3675	SLM	(-2914)		Small show gas 3715.	(-2954)	
					Water (3715-19 1/2)	(-2954)	
Total Depth		3738	(-2977)		500 ft. in 8 hrs.		

Remarks 1173' eq. 1178' SLM; 1521' eq. 1521' SLM; 3017' eq. 3017' SLM; 3677' eq. 3677' SLM.

Signed D. C. Shackelford