



Western Michigan University  
ScholarWorks at WMU

---

Legacy Scout Tickets from Pure Oil Company

---

8-20-2021

**MGRRE\_PureOilScoutTickets\_Durkee, Beulah  
M\_1\_21073111830000**

MGRRE

*Western Michigan University*

Follow this and additional works at: <https://scholarworks.wmich.edu/pure>



Part of the Geology Commons

---

#### **WMU ScholarWorks Citation**

MGRRE, "MGRRE\_PureOilScoutTickets\_Durkee, Beulah M\_1\_21073111830000" (2021). *Legacy Scout Tickets from Pure Oil Company*. 3658.

<https://scholarworks.wmich.edu/pure/3658>

This Document is brought to you for free and open access via ScholarWorks at WMU. It has been accepted for inclusion in Legacy Scout Tickets from Pure Oil Company by an authorized administrator of ScholarWorks at WMU. See the National Digital Catalogue - Science Base Catalogue for more collections submitted by MGRRE.



---

**MGRRE\_PureOilScoutTickets\_Durkee, Beulah M\_1\_21073111830000**

API 21073111830000

Permit Number 11183

Lease Name Durkee, Beulah M

Well Number 1

County Isabella

Township 16N

Range 06W

Section 32

2021 DEQ or Pure co\_name Summit Petroleum Corporation

Pure Number 978

Latitude 43.7400294

Longitude -85.060082

THE PURE OIL COMPANY

LOCATION REPORT

Date November 1, 1944

A.F.E. No. \_\_\_\_\_

Division Mich. Producing

District \_\_\_\_\_

Lease \_\_\_\_\_

Beulah M. Durkee  
Beulah M. Durkee

Acres \_\_\_\_\_ Lease No. 32

Elevation \_\_\_\_\_

Well No. 1

(Serial No. 978)

Quadrangle C N 1/2 NE NW

Sec. 32

Twp. 16 N

Rge. 6 W

XBak  
XDist.

Coldwater  
Coldwater

Survey \_\_\_\_\_ County Isabella

State Michigan

Operator Sohio Petroleum Company

Map \_\_\_\_\_

Coldwater Twp. Isabella Co.  
Coldwater Township, Isabella County

330 330 Feet from North Line of Lease  
610 610 " " East " " "

" " South " " "  
" " West " " "

330 330 Feet from North Line of Section  
610 610 " " East " " "

" " South " " "  
" " West " " "

LEGEND

○ Location

☀ Gas Well

● Oil Well

☀ Gas - Distillate Well

○ or ○ Dry Hole

● Dry Showing Oil

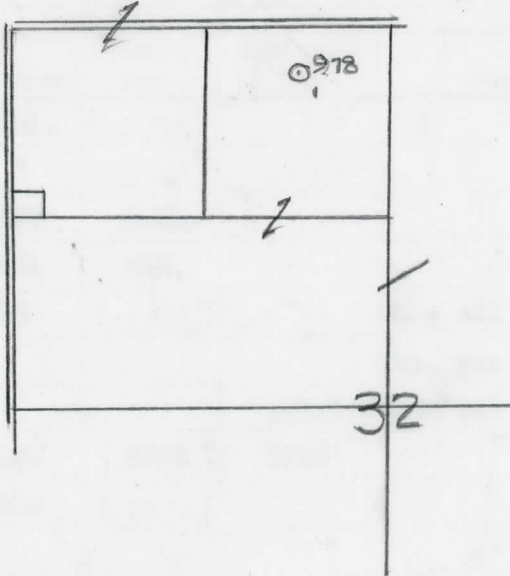
○ Dry Showing Gas

⊗ Abandoned Location

☀ or ☀ Abandoned Gas Well

● or ● Abandoned Oil Well

⊗ or ⊗ Input Well



Scale \_\_\_\_\_

Remarks: \_\_\_\_\_

Submitted by \_\_\_\_\_

RN

Civil Engineer

Approved by \_\_\_\_\_

Division Manager

Approved by \_\_\_\_\_

Vice-President - General Manager

Michigan Producing Division

Date January 4, 1945 No. 978  
 State Mich. County Isabella DISTRICT Coldwater Twp. 16 N Rge. 6 W  
 Well No. 1 (Serial No.) 978 Farm Beulah M. Durkee Acres \_\_\_\_\_  
 Operator Sohio Petroleum Company Information secured By Scouting Department  
 Date well started 11-18-44 Date well completed 12-29-44 Elevation 983.6

PRODUCTION BOARD

1st 24 hours natural 240 Barrels (Flowed-pinned)  
 2nd 24 hours natural \_\_\_\_\_  
 Date of shot \_\_\_\_\_ No. of quarts \_\_\_\_\_ From \_\_\_\_\_ to \_\_\_\_\_ From \_\_\_\_\_ to \_\_\_\_\_  
 Date of acid \_\_\_\_\_ No. of gallons \_\_\_\_\_  
 1st 24 hours after acid shot \_\_\_\_\_  
 2nd 24 hours after acid shot \_\_\_\_\_

FORMATION AND CASING RECORD

Formation	Top	Bottom	Top Pay	Bottom Pay	Remarks	Casing	
						Size	Set at
Brown Dolomite	1258	Schl.	(-274)			10"	.222
Mich. Stray	1370	"	(-386)			6-5/8"	1693
Marshall B	(-189)	1673	Schl.			5-3/16"	3704
Antrim (-1519)	2503	3101	SLM.				
Traverse Lime	3120	SLM.	(-2136)		Show oil and gas 3134-3160. Inc. gas 3211.	(-2227)	(-2211)
Dundee (-2720)	3704	SLM.	3706 (-2722)	3716	Show oil 3265-3270.		
Total Depth		3716	(-2732)				

Remarks 3194' equals 3210' SLM; 3707' equals 3707' SLM.

Signed D. C. Shackelford