



Western Michigan University  
ScholarWorks at WMU

---

Legacy Scout Tickets from Pure Oil Company

---

8-20-2021

**MGRRE\_PureOilScoutTickets\_Watkins,  
Andrew\_1\_21073112150000**

MGRRE  
*Western Michigan University*

Follow this and additional works at: <https://scholarworks.wmich.edu/pure>



Part of the Geology Commons

---

#### **WMU ScholarWorks Citation**

MGRRE, "MGRRE\_PureOilScoutTickets\_Watkins, Andrew\_1\_21073112150000" (2021). *Legacy Scout Tickets from Pure Oil Company*. 3662.  
<https://scholarworks.wmich.edu/pure/3662>

This Document is brought to you for free and open access via ScholarWorks at WMU. It has been accepted for inclusion in Legacy Scout Tickets from Pure Oil Company by an authorized administrator of ScholarWorks at WMU. See the National Digital Catalogue - Science Base Catalogue for more collections submitted by MGRRE.



---

**MGRRE\_PureOilScoutTickets\_Watkins, Andrew\_1\_21073112150000**

API 21073112150000

Permit Number 11215

Lease Name Watkins, Andrew

Well Number 1

County Isabella

Township 16N

Range 06W

Section 29

2021 DEQ or Pure co\_name Summit Petroleum Corporation

Pure Number 982

Latitude 43.7508558

Longitude -85.0508508

# THE PURE OIL COMPANY LOCATION REPORT

Date November 15, 1944

A.F.E. No. \_\_\_\_\_

Division Mich. Producing

District \_\_\_\_\_ Lease \_\_\_\_\_

Andrew Watkins  
Andrew Watkins

Acres \_\_\_\_\_ Lease No. \_\_\_\_\_ Elevation \_\_\_\_\_ Well No. 1 (Serial No. 982)

Quadrangle C N 1/2 SE NE Sec. 29 Twp. 16 N Rge. 6 W Twp. Coldwater

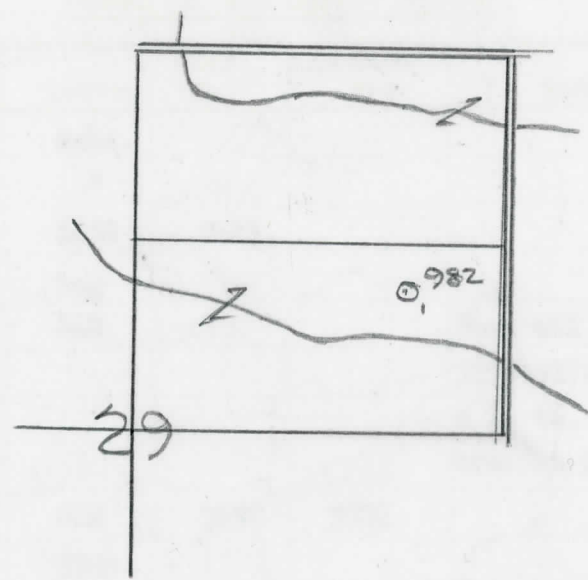
Survey Sohio Pet Co. County Isabella State Michigan

Operator Sohio Petroleum Company Map Coldwater Twp - Isabella Co.

|            |            |                                 |
|------------|------------|---------------------------------|
| <u>330</u> | <u>330</u> | Feet from North Line of Lease   |
| <u>660</u> | <u>660</u> | " " East " " "                  |
|            |            | " " South " " "                 |
|            |            | " " West " " "                  |
|            |            | Feet from North Line of Section |
| <u>660</u> | <u>660</u> | " " East " <u>1/4</u> "         |
| <u>990</u> | <u>990</u> | " " South " " "                 |
|            |            | " " West " " "                  |

### LEGEND

- Location
- ☀ Gas Well
- Oil Well
- ☀ Gas - Distillate Well
- ∅ or ○ Dry Hole
- Dry Showing Oil
- ☀ Dry Showing Gas
- ⊖ Abandoned Location
- ☀ or ⊖ Abandoned Gas Well
- or ● Abandoned Oil Well
- or ○ Input Well



Remarks: \_\_\_\_\_ Scale \_\_\_\_\_

Submitted by RN \_\_\_\_\_  
Civil Engineer

Approved by \_\_\_\_\_  
Division Manager

Approved by \_\_\_\_\_  
Vice-President - General Manager

COMPLETION RECORD OF WELLS DRILLED BY OTHER OPERATORS

Michigan Producing Division

Date January 31, 1945 No. 982  
 State Mich. County Isabella ~~XXXX~~ Twp. Coldwater Sec. 29 Twp. 16 N Rge. 6 W  
 Well No. 1 (Serial No.) ~~XXXXXXX~~ 982 Farm Andrew Watkins Acres \_\_\_\_\_  
 Operator Sohio Petroleum Co. Information secured ~~XXXX~~ By Scouting Department  
 Date well started 12-7-44 Date well completed 1-24-45 Elevation 970.4

PRODUCTION BOARD

1st 24 hours natural Est. 1938 Barrels  
 2nd 24 hours natural \_\_\_\_\_  
 Date of shot \_\_\_\_\_ No. of quarts \_\_\_\_\_ From \_\_\_\_\_ to \_\_\_\_\_ From \_\_\_\_\_ to \_\_\_\_\_  
 Date of acid \_\_\_\_\_ No. of gallons \_\_\_\_\_  
 1st 24 hours after acid shot \_\_\_\_\_  
 2nd 24 hours after acid shot \_\_\_\_\_

FORMATION AND CASING RECORD

| Formation      | Top          | Bottom | Top Pay      | Bottom Pay | Remarks   | Casing  |        |
|----------------|--------------|--------|--------------|------------|---|---------|--------|
|                |              |        |              |            |   | Size    | Set at |
| Brown Dolomite | 1259         | Schl.  | (-289)       |            |   | 10"     | 240    |
| Mich. Stray    | 1371         | "      | (-401)       |            |   | 6-5/8"  | 1702   |
| Marshall       | (-688) ?     | 1658   | Schl.        |            |   | 5-3/16" | 3691   |
| Antrim         | 2510         | Log    | (-1540)      |            |   |         |        |
| Traverse Lime  | 3108         | SLM    | (-2138)      |            | Show oil and gas  |         |        |
|                |              |        |              | (-2200)    | 3170-3176; Inc. gas & 1 1/2 ba. oil in 16 hrs. at 3200. (-2230) |         |        |
| Dundee         | 3693 (-2723) | SLM    | 3697 (-2727) | 3705       |   |         |        |
| Total Depth    |              | 3705   | (-2735)      |            |   |         |        |

Remarks 3145' equals 3153' SLM; 3688' equals 3693' SLM.

Signed D. C. Shackelford