



Western Michigan University
ScholarWorks at WMU

Legacy Scout Tickets from Pure Oil Company

8-20-2021

MGRRE_PureOilScoutTickets_Rodgers, J W_1_21073112200000

MGRRE

Western Michigan University

Follow this and additional works at: <https://scholarworks.wmich.edu/pure>



Part of the Geology Commons

WMU ScholarWorks Citation

MGRRE, "MGRRE_PureOilScoutTickets_Rodgers, J W_1_21073112200000" (2021). *Legacy Scout Tickets from Pure Oil Company*. 3666.

<https://scholarworks.wmich.edu/pure/3666>

This Document is brought to you for free and open access via ScholarWorks at WMU. It has been accepted for inclusion in Legacy Scout Tickets from Pure Oil Company by an authorized administrator of ScholarWorks at WMU. See the National Digital Catalogue - Science Base Catalogue for more collections submitted by MGRRE.



MGRRE_PureOilScoutTickets_Rodgers, J W_1_21073112200000

API 21073112200000

Permit Number 11220

Lease Name Rodgers, J W

Well Number 1

County Isabella

Township 16N

Range 06W

Section 29

2021 DEQ or Pure co_name Summit Petroleum Corporation

Pure Number 986

Latitude 43.7437551

Longitude -85.0553886

THE PURE OIL COMPANY LOCATION REPORT

Date November 22, 1944 A.F.E. No. _____

Division Mich. Producing District _____ Lease J. W. Rodgers
J. W. Rodgers

Acres _____ Lease No. _____ Elevation _____ Well No. 1 (Serial No. 986)

Quadrangle C N 1/2 - SW - SE Sec. 29 Twp. 16 N Rge. 6 W ~~EX~~ ~~EX~~ Twp. Coldwater
C N 1/2 - SW SE Sec. 29 Twp. 16 N Rge. 6 W Twp. Coldwater

Survey _____ County Isabella State Michigan

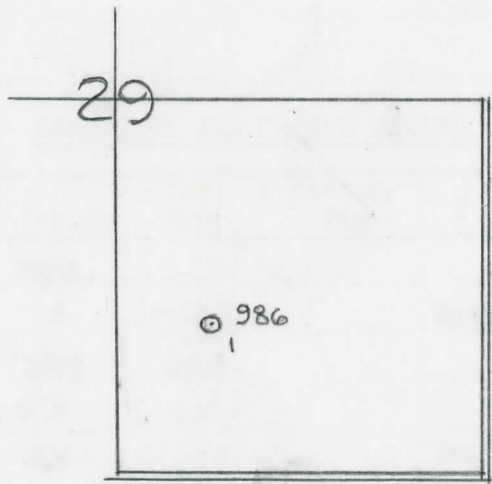
Operator Cities Service Oil Co Map Coldwater Twp - Isabella Co
Cities Service Oil Company Coldwater Township, Isabella County

660	660	Feet from North Line of Lease
990	990	" " East " " "
660	660	" " South " " "
		" " West " " "

		Feet from North Line of Section
990	990	" " East " " "
660	660	" " South " <u>1/4</u> "
		" " West " " "

LEGEND

- Location
- ☀ Gas Well
- Oil Well
- ☀ Gas - Distillate Well
- or ○ Dry Hole
- Dry Showing Oil
- ☀ Dry Showing Gas
- ⊗ Abandoned Location
- ☀ or ☀ Abandoned Gas Well
- or ● Abandoned Oil Well
- or ○ Input Well



Remarks: _____

Scale _____

Submitted by EN _____ Approved by _____
Civil Engineer Division Manager

Approved by _____
Vice-President - General Manager

Date

MOLEBUREL 55' 10"

LOCATION BEBOVL

V.E.E. NO.

THE PURE OIL COMPANY

The Pure Oil Company

COMPLETION RECORD OF WELLS DRILLED BY OTHER OPERATORS

Michigan Producing Division

Date January 24, 1945 No. 986
 State Mich. County Isabella ~~xxxxxx~~ Twp. Coldwater Sec. 29 Twp. 16 N Rge. 6 W
 (Serial No.)
 Well No. 1 (~~xxxxxx~~) 986 Farm J. W. Rodgers Acres
 Operator Cities Service Oil Company Information secured ~~xxxx~~ By Scouting Department
 Date well started 11-24-44 Date well completed 1-16-45 Elevation 1016.5

PRODUCTION BOARD

1st 24 hours natural Est. 848 Barrels
 2nd 24 hours natural
 Date of shot No. of quarts From to From to
 Date of acid No. of gallons
 1st 24 hours after acid shot
 2nd 24 hours after acid shot

FORMATION AND CASING RECORD

Formation	Top	Bottom	Top Pay	Bottom Pay	Remarks	Casing	
						Size	Set at
Brown Dolomite	1297	Schl.	(-280)			13-3/8"	624
Mich. Stray	1398	"	(-381)		Gas 1420-1435 Schl.	6-5/8"	1731
Marshall	1503 (-486)	1699	Schl.		(-403)	5-3/16"	3736
Antrim	2545	SLM	(-1528)				
Traverse Lime	3151	SLM	(-2134)		Small show oil and gas 3195-3214.	(-2178)	
Traverse	3133	(-2116)			Inc. gas 3238 - gauged 37,680 ft.	(-2221)	
Dundee	3732	(-2715)	3739	3742			
Total Depth		3746	(-2729)				

Remarks 2535' eq. 2542' SLM; 3159' eq. 3158' SLM; 3726' eq. 3728' SLM.

Signed D. C. Shackelford