



Western Michigan University
ScholarWorks at WMU

Legacy Scout Tickets from Pure Oil Company

8-20-2021

**MGRRE_PureOilScoutTickets_Watkins,
Andrew_2_21073112420000**

MGRRE
Western Michigan University

Follow this and additional works at: <https://scholarworks.wmich.edu/pure>



Part of the Geology Commons

WMU ScholarWorks Citation

MGRRE, "MGRRE_PureOilScoutTickets_Watkins, Andrew_2_21073112420000" (2021). *Legacy Scout Tickets from Pure Oil Company*. 3669.
<https://scholarworks.wmich.edu/pure/3669>

This Document is brought to you for free and open access via ScholarWorks at WMU. It has been accepted for inclusion in Legacy Scout Tickets from Pure Oil Company by an authorized administrator of ScholarWorks at WMU. See the National Digital Catalogue - Science Base Catalogue for more collections submitted by MGRRE.



MGRRE_PureOilScoutTickets_Watkins, Andrew_2_21073112420000

API 21073112420000

Permit Number 11242

Lease Name Watkins, Andrew

Well Number 2

County Isabella

Township 16N

Range 06W

Section 29

2021 DEQ or Pure co_name A N R Pipeline Company

Pure Number 989

Latitude 43.75084

Longitude -85.0551

THE PURE OIL COMPANY LOCATION REPORT

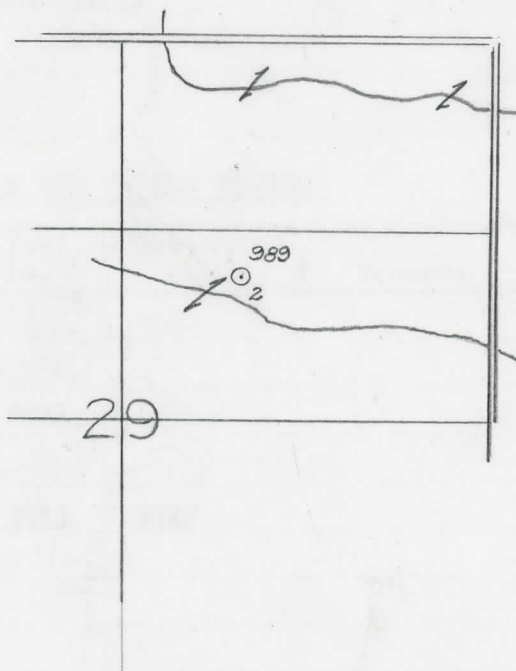
Date November 29, 1944 A.F.E. No. _____
 Division Mich. Producing District _____ Lease Andrew Watkins
Andrew Watkins
 Acres _____ Lease No. _____ Elevation _____ Well No. 2 (Serial No. 989)
 Quadrangle C N $\frac{1}{2}$ SW NE Sec. 29 Twp. 16 N Rge. 6 W ~~XBik~~ Coldwater ~~YDist.~~ Coldwater
Isabella Twp. Coldwater
 Survey _____ County Isabella State Michigan
 Operator Sohio Petroleum Co. Map Coldwater Twp, Isabella Co.
Sohio Petroleum Company Coldwater Township, Isabella County

330 330 Feet from North Line of Lease
 " " East " " "
 " " South " " "
810 810 " " West " "1/4"
 Feet from North Line of Section
 " " East " " "
990 990 " " South " "1/4"
810 810 " " West " " "

Low

LEGEND

- Location
- ☀ Gas Well
- Oil Well
- ☀ Gas - Distillate Well
- ∅ or ○ Dry Hole
- Dry Showing Oil
- ☀ Dry Showing Gas
- ⊗ Abandoned Location
- ☀ or ☀ Abandoned Gas Well
- or ● Abandoned Oil Well
- or ○ Input Well



Scale _____

Remarks: _____

Submitted by _____ Civil Engineer Approved by _____ Division Manager
 _____ Approved by _____ Vice-President - General Manager

THE PURE OIL COMPANY

COMPLETION RECORD OF WELLS DRILLED BY OTHER OPERATORS

Michigan Producing Division

Date January 24, 1945 No. 989
 State Mich. County Isabella ~~XXXX~~ Twp. Coldwater Sec. 29 Twp. 16 N Rge. 6 W
 (Serial No.)
 Well No. 2 (~~XXXXXXXXXX~~) 989 Farm Andrew Watkins Acres _____
 Operator Sohio Petroleum Company Information secured ~~XXXX~~ By Scouting Department
 Date well started 12-9-44 Date well completed 1-22-45 Elevation 984.1

PRODUCTION BOARD

1st 24 hours natural Est. 720 Barrels
 2nd 24 hours natural _____
 Date of shot _____ No. of quarts _____ From _____ to _____ From _____ to _____
 Date of acid _____ No. of gallons _____
 1st 24 hours after acid shot _____
 2nd 24 hours after acid shot _____

FORMATION AND CASING RECORD

Formation	Top	Bottom	Top Pay	Bottom Pay	Remarks	Casing	
						Size	Set at
Brown Dolomite	1275	Schl.	(-291)			10"	633
Mich. Stray	1382	"	(-398)			5-3/16"	3714
Marshall	?	1674	Schl.	(-690)			
Traverse Lime	3126	Schl.	(-2142)	(-2731)			
Dundee (-2727)	3711	SLM	3715	3727			
Total Depth		3727	(-2743)				

Remarks 1281' equals 1278' SLM.

Signed D. C. Shackelford