



Western Michigan University  
ScholarWorks at WMU

---

Legacy Scout Tickets from Pure Oil Company

---

8-20-2021

## MGRRE\_PureOilScoutTickets\_Parker Communitized\_1\_21073113190000

MGRRE

*Western Michigan University*

Follow this and additional works at: <https://scholarworks.wmich.edu/pure>



Part of the Geology Commons

---

### WMU ScholarWorks Citation

MGRRE, "MGRRE\_PureOilScoutTickets\_Parker Communitized\_1\_21073113190000" (2021). *Legacy Scout Tickets from Pure Oil Company*. 3674.

<https://scholarworks.wmich.edu/pure/3674>

This Document is brought to you for free and open access via ScholarWorks at WMU. It has been accepted for inclusion in Legacy Scout Tickets from Pure Oil Company by an authorized administrator of ScholarWorks at WMU. See the National Digital Catalogue - Science Base Catalogue for more collections submitted by MGRRE.



---

**MGRRE\_PureOilScoutTickets\_Parker Communitized\_1\_21073113190000**

API 21073113190000

Permit Number 11319

Lease Name Parker Communitized

Well Number 1

County Isabella

Township 13N

Range 06W

Section 26

2021 DEQ or Pure co\_name Barber, Leslie T.

Pure Number 994

Latitude 43.49062

Longitude -84.98822

THE PURE OIL COMPANY

LOCATION REPORT

Date January 10, 1945

A.F.E. No. \_\_\_\_\_

Division Mich. Producing District \_\_\_\_\_

Lease Comm. Parker

Acres \_\_\_\_\_ Lease No. \_\_\_\_\_ Elevation \_\_\_\_\_ Well No. 1 (Serial No. 994)

Quadrangle C N 1/2 SE NE Sec. 26 Twp. 13 N Rge. 6 W ~~Rolland~~ Rolland Twp. Rolland

Survey \_\_\_\_\_ County Isabella State Michigan

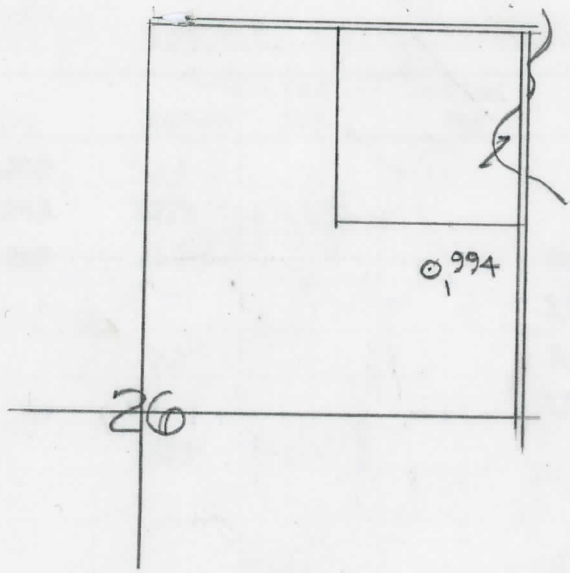
Operator Leslie T. Barber Map Rolland Twp - Isabella Co

Feet from North Line of Lease	
<u>660</u>	<u>660</u>
" "	East " " "
<u>990</u>	<u>990</u>
" "	South " " "
" "	West " " "
Feet from North Line of Section	
<u>660</u>	<u>660</u>
" "	East " <u>1/4</u> "
<u>990</u>	<u>990</u>
" "	South " " "
" "	West " " "

LEGEND

- Location
- ☉ Gas Well
- Oil Well
- ☉ Gas - Distillate Well
- ⊙ or ○ Dry Hole
- Dry Showing Oil
- ☉ Dry Showing Gas
- ⊙ Abandoned Location
- ☉ or ⊙ Abandoned Gas Well
- or ● Abandoned Oil Well
- or ○ Input Well

Low.



Scale \_\_\_\_\_

Remarks: \_\_\_\_\_

Submitted by RN \_\_\_\_\_  
Civil Engineer

Approved by \_\_\_\_\_  
Division Manager

Approved by \_\_\_\_\_  
Vice-President - General Manager

THE PURE OIL COMPANY

The Pure Oil Company  
COMPLETION RECORD OF WELLS DRILLED BY OTHER OPERATORS

Michigan Producing Division

Date **February 21, 1945** No. **994**  
 State **Mich.** County **Isabella** ~~Risxxx~~ Twp. **Rolland** Sec. **26** Twp. **13 N** Rge. **6 W**  
 (Serial No.)  
 Well No. **1** (~~XXXXXXXXXX~~) **994** Farm **Comm. Parker** Acres  
 Operator **Leslie T. Barber** Information secured ~~xxxx~~ By **Scouting Department**  
 Date well started **1-16-45** Date well completed **2-15-45** Elevation **896.4**

PRODUCTION BOARD

1st 24 hours natural **Dry Hole**  
 2nd 24 hours natural  
 Date of shot No. of quarts From to From to  
 Date of acid No. of gallons  
 shot  
 1st 24 hours after acid  
 shot  
 2nd 24 hours after acid

FORMATION AND CASING RECORD

Formation	Top	Bottom	Top Pay	Bottom Pay	Remarks	Casing	
						Size	Set at
Brown Dolomite	1200	(1304)				8-5/8"	546
Stray Stray	1265	1275	(1369)			6-5/8"	999
Mich. Stray	1298	(1402)			Show salt water 1308-1315. (1412) Inc. salt water 1318-1323. (1422)		
Total Depth		1323	(1427)				

Remarks **1032' equals 1029' SLM.**

Signed **D. C. Shackelford**