



Western Michigan University  
ScholarWorks at WMU

---

Legacy Scout Tickets from Pure Oil Company

---

8-20-2021

**MGRRE\_PureOilScoutTickets\_Spencer,  
Almon\_2\_21073113780000**

MGRRE  
*Western Michigan University*

Follow this and additional works at: <https://scholarworks.wmich.edu/pure>



Part of the Geology Commons

---

#### WMU ScholarWorks Citation

MGRRE, "MGRRE\_PureOilScoutTickets\_Spencer, Almon\_2\_21073113780000" (2021). *Legacy Scout Tickets from Pure Oil Company*. 3683.  
<https://scholarworks.wmich.edu/pure/3683>

This Document is brought to you for free and open access via ScholarWorks at WMU. It has been accepted for inclusion in Legacy Scout Tickets from Pure Oil Company by an authorized administrator of ScholarWorks at WMU. See the National Digital Catalogue - Science Base Catalogue for more collections submitted by MGRRE.



---

**MGRRE\_PureOilScoutTickets\_Spencer, Almon\_2\_21073113780000**

API 21073113780000

Permit Number 11378

Lease Name Spencer, Almon

Well Number 2

County Isabella

Township 16N

Range 06W

Section 28

2021 DEQ or Pure co\_name Mid Michigan Gas Storage Company

Pure Number 1003

Latitude 43.7508975

Longitude -85.0456759

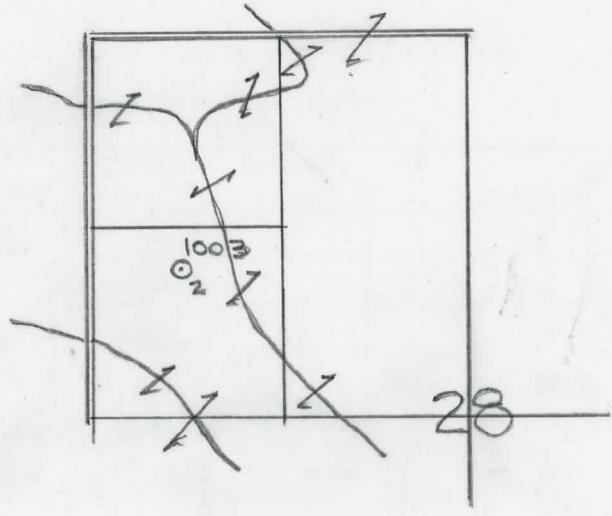
# THE PURE OIL COMPANY LOCATION REPORT

Date February 21, 1945 A.F.E. No. \_\_\_\_\_  
 Division Mich. Producing District \_\_\_\_\_ Lease Almon Spencer  
 Acres \_\_\_\_\_ Lease No. \_\_\_\_\_ Elevation \_\_\_\_\_ Well No. 2 (Serial No. 1003)  
 Quadrangle C N 1/2 SW NW Sec. 28 Twp. 16 N Rge. 6 W XBWK XDIST. Coldwater  
 Survey \_\_\_\_\_ County Isabella State Michigan  
 Operator Sohio Petroleum Co. Map Coldwater Twp. Isabella Co.  
330 330 \_\_\_\_\_

_____	_____	Feet from North Line of Lease
_____	_____	" " East " " "
_____	_____	" " South " " "
<u>660</u>	<u>660</u>	" " West " " "
_____	_____	Feet from North Line of Section
_____	_____	" " East " " "
<u>990</u>	<u>990</u>	" " South " <u>1/4</u>
<u>660</u>	<u>660</u>	" " West " " "

**LEGEND**

- Location
- ☀ Gas Well
- Oil Well
- ☀ Gas - Distillate Well
- or ○ Dry Hole
- Dry Showing Oil
- ☀ Dry Showing Gas
- ⊖ Abandoned Location
- ☀ or ☀ Abandoned Gas Well
- or ● Abandoned Oil Well
- or ○ Input Well



Scale \_\_\_\_\_

Remarks: \_\_\_\_\_  
 \_\_\_\_\_  
 \_\_\_\_\_

Submitted by EN \_\_\_\_\_ Approved by \_\_\_\_\_  
 Civil Engineer Division Manager  
 Approved by \_\_\_\_\_  
 Vice-President - General Manager

DATE

ВЕРИЛНА СТ' ТИТ?

LOCATION REPORT

V.E.E. No.

THE PURE OIL COMPANY

COMPLETION RECORD OF WELLS DRILLED BY OTHER OPERATORS

Michigan Producing Division

Date May 9, 1945 No. 1003  
 State Mich. County Isabella ~~RISCK~~ Twp. Coldwater Sec. 28 Twp. 16 N Rge. 6 W  
 (Serial No.)  
 Well No. 2 (~~XXXXXXXXXX~~) 1003 Farm Almon Spencer Acres  
 Operator Sohio Petroleum Co. Information secured ~~RISCK~~ By Scouting Department  
 Date well started 3-8-45 Date well completed 5-3-45 Elevation 960.8

PRODUCTION BOARD

1st 24 hours natural Est. 1328 Bbls. (Potential)  
 2nd 24 hours natural  
 Date of shot No. of quarts From To From to  
 Date of acid No. of gallons  
 shot  
 1st 24 hours after acid  
 shot  
 2nd 24 hours after acid

FORMATION AND CASING RECORD

Formation	Top	Bottom	Top Pay	Bottom Pay	Remarks	Casing	
						Size	Set at
Brown Dolomite	1248	Schl.	(-287)			10"	304
Mich. Stray	1364	"	(-403)			6-5/8"	1700
Marshall	(-683)	1644	Schl.			5-3/16"	3685
Traverse Lime	3135	(-2174)			Show gas 3215.		
Dundee	(-2725) 3686	S.L.M.	3688	3704 (-2725)	(-2254)		
Total Depth		3704	(-2743)				

Remarks Flowed 332 bbls. in 6 hours open thru casing at 3704.  
3706' equals 3688' S.L.M.

Signed D. C. Shackelford