



Western Michigan University  
ScholarWorks at WMU

---

Legacy Scout Tickets from Pure Oil Company

---

8-20-2021

**MGRRE\_PureOilScoutTickets\_Hoffman, Fred  
L.\_1\_21073113930000**

MGRRE  
*Western Michigan University*

Follow this and additional works at: <https://scholarworks.wmich.edu/pure>



Part of the Geology Commons

---

#### **WMU ScholarWorks Citation**

MGRRE, "MGRRE\_PureOilScoutTickets\_Hoffman, Fred L.\_1\_21073113930000" (2021). *Legacy Scout Tickets from Pure Oil Company*. 3684.  
<https://scholarworks.wmich.edu/pure/3684>

This Document is brought to you for free and open access via ScholarWorks at WMU. It has been accepted for inclusion in Legacy Scout Tickets from Pure Oil Company by an authorized administrator of ScholarWorks at WMU. See the National Digital Catalogue - Science Base Catalogue for more collections submitted by MGRRE.



---

**MGRRE\_PureOilScoutTickets\_Hoffman, Fred L.\_1\_21073113930000**

API 21073113930000

Permit Number 11393

Lease Name Hoffman, Fred L.

Well Number 1

County Isabella

Township 16N

Range 06W

Section 29

2021 DEQ or Pure co\_name Summit Petroleum Corporation

Pure Number 1004

Latitude 43.750723

Longitude -85.0606375

# THE PURE OIL COMPANY

## LOCATION REPORT

Date March 7, 1945 A.F.E. No. \_\_\_\_\_

Division Mich. Producing District \_\_\_\_\_ Lease Fred L. Hoffman

Acres \_\_\_\_\_ Lease No. \_\_\_\_\_ Elevation \_\_\_\_\_ Well No. 1 (Serial No. 1004)

Quadrangle C N 1/2 SE NW Sec. 29 Twp. 16 N Rge. 6 W Twp. Coldwater

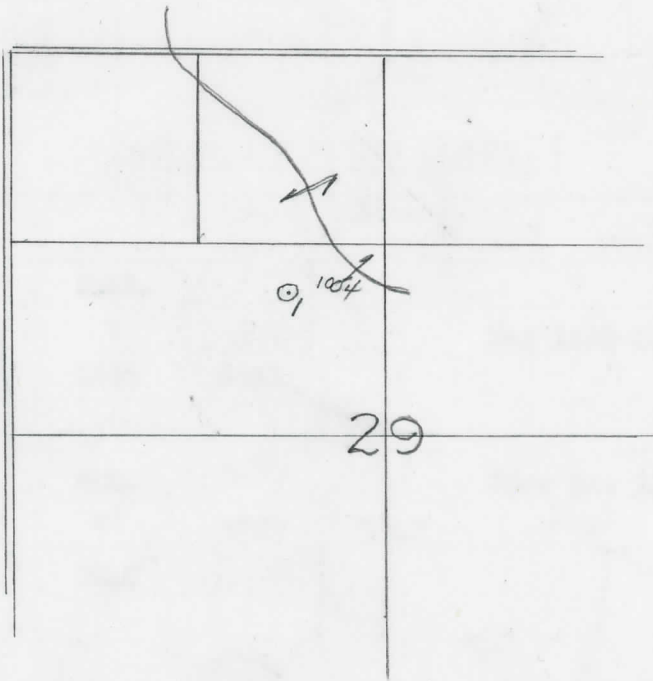
Survey \_\_\_\_\_ County Isabella State Michigan

Operator Sohio Petroleum Co. Map Coldwater Twp - Isabella Co.  
Sohio Petroleum Company Coldwater Township, Isabella County

<u>330</u>	<u>330</u>	Feet from North Line of Lease
<u>660</u>	<u>660</u>	" " East " " "
		" " South " " "
		" " West " " "
		Feet from North Line of Section
<u>660</u>	<u>660</u>	" " East " <u>1/4</u> "
<u>990</u>	<u>990</u>	" " South " " "
		" " West " " "

### LEGEND

- Location
- Gas Well
- Oil Well
- Gas - Distillate Well
- Dry Hole
- Dry Showing Oil
- Dry Showing Gas
- Abandoned Location
- Abandoned Gas Well
- Abandoned Oil Well
- Input Well



Scale \_\_\_\_\_

Remarks: \_\_\_\_\_

Submitted by \_\_\_\_\_ Civil Engineer Approved by \_\_\_\_\_ Division Manager

Approved by \_\_\_\_\_ Vice-President - General Manager

COMPLETION RECORD OF WELLS DRILLED BY OTHER OPERATORS

Michigan Producing Division

Date May 16, 1945 No. 1004  
 State Mich. County Isabella Twp. Coldwater Sec. 29 Twp. 16 N Rge. 6 W  
 Well No. 1 (Serial No.) 1004 Farm Fred L. Hoffman Acres \_\_\_\_\_  
 Operator Sohio Petroleum Co. Information secured Scouting Department  
 Date well started 3-13-45 Date well completed 5-9-45 Elevation 1000.6

PRODUCTION BOARD

1st 24 hours natural Est. Potential 1512 Barrels  
 2nd 24 hours natural \_\_\_\_\_  
 Date of shot \_\_\_\_\_ No. of quarts \_\_\_\_\_ From \_\_\_\_\_ To \_\_\_\_\_ From \_\_\_\_\_ to \_\_\_\_\_  
 Date of acid \_\_\_\_\_ No. of gallons \_\_\_\_\_  
 1st 24 hours after acid shot \_\_\_\_\_  
 2nd 24 hours after acid shot \_\_\_\_\_

FORMATION AND CASING RECORD

Formation	Top	Bottom	Top Pay	Bottom Pay	Remarks	Casing	
						Size	Set at
Brown Dolomite	1284	Schl.	(-283)			10"	256
Mich. Stray	1395	"	(-394)		Gas 1408-1412.	6-5/8"	1710
Marshall	(-679)	1690	Schl.		(-407)	5-3/16"	3728
Antrim	2540	(-1539)					
Traverse Lime	3147	SIM.	(-2146)		Show gas 3240. (-2239)		
Dundee	3731	"	3733	3747	(-2732)		
Total Depth	(-2730)	3747	(-2746)				

Remarks Well flowed 63 bbls. last one hour while drilling.  
3255' equals 3250' SIM; 3747' equals 3747' SIM.

Signed D. C. Shackelford