



Western Michigan University
ScholarWorks at WMU

Legacy Scout Tickets from Pure Oil Company

8-20-2021

MGRRE_PureOilScoutTickets_Slocum, S D_1_21073114240000

MGRRE

Western Michigan University

Follow this and additional works at: <https://scholarworks.wmich.edu/pure>



Part of the Geology Commons

WMU ScholarWorks Citation

MGRRE, "MGRRE_PureOilScoutTickets_Slocum, S D_1_21073114240000" (2021). *Legacy Scout Tickets from Pure Oil Company*. 3686.

<https://scholarworks.wmich.edu/pure/3686>

This Document is brought to you for free and open access via ScholarWorks at WMU. It has been accepted for inclusion in Legacy Scout Tickets from Pure Oil Company by an authorized administrator of ScholarWorks at WMU. See the National Digital Catalogue - Science Base Catalogue for more collections submitted by MGRRE.



MGRRE_PureOilScoutTickets_Slocum, S D_1_21073114240000

API 21073114240000

Permit Number 11424

Lease Name Slocum, S D

Well Number 1

County Isabella

Township 16N

Range 03W

Section 28

2021 DEQ or Pure co_name Summit Petroleum Corporation

Pure Number 1006

Latitude 43.74389

Longitude -84.6839983

THE PURE OIL COMPANY LOCATION REPORT

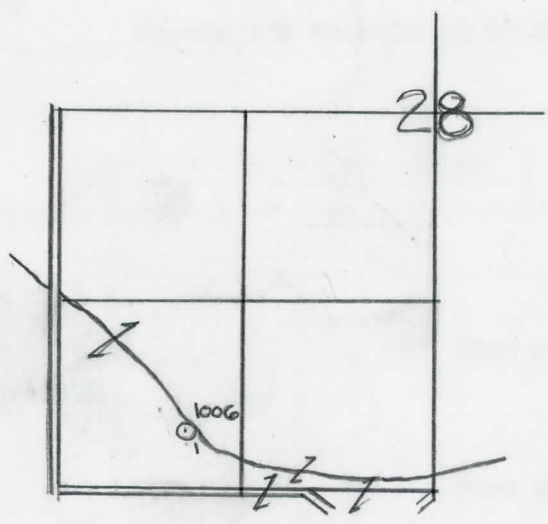
Date March 21, 1945 A.F.E. No. _____
 Division Mich. Producing District _____ Lease S.D. Slocum
S. D. Slocum
 Acres _____ Lease No. _____ Elevation _____ Well No. 1 (Serial No. 1006)
 Quadrangle SE-SW-SW Sec. 28 Twp. 16 N Rge. 3 W ~~Dist.~~ Wise
SE SW SW
 Survey _____ County Isabella State Michigan
 Operator Cities Service Oil Co. Map Wise Twp, Isabella Co.

		Feet from North Line of Lease
<u>430</u>	<u>430</u>	" " East " " "
<u>430</u>	<u>430</u>	" " South " " "
		" " West " " "
		Feet from North Line of Section
<u>430</u>	<u>430</u>	" " East " " "
<u>890</u>	<u>890</u>	" " South " <u>1/4</u> "
		" " West " " "

LEGEND

- Location
- ☉ Gas Well
- Oil Well
- ☉ Gas - Distillate Well
- ∅ or ○ Dry Hole
- Dry Showing Oil
- ☉ Dry Showing Gas
- ⊗ Abandoned Location
- ☉ or ☉ Abandoned Gas Well
- or ● Abandoned Oil Well
- or ○ Input Well

Low



Scale _____

Remarks: _____

Submitted by RN Civil Engineer Approved by _____ Division Manager
 Approved by _____ Vice-President - General Manager

THE PURE OIL COMPANY

The Pure Oil Company

COMPLETION RECORD OF WELLS DRILLED BY OTHER OPERATORS

Michigan Producing Division

Date May 31, 1945 No. 1006

State Mich. County Isabella ~~State~~ Twp. Wise Sec. 28 Twp. 16 N Rge. 3 W

Well No. 1 (Serial No.) ~~(County No.)~~ 1006 Farm S. D. Slocum Acres

Operator Cities Service Oil Co. Information secured ~~from~~ By Scouting Department

Date well started 4-10-45 Date well completed 5-24-45 Elevation 754.5

PRODUCTION BOARD

14
1st ~~24~~ hours natural Flowed 80 barrels.

2nd 24 hours natural

Date of shot No. of quarts From To From to

Date of acid 5-26-45 No. of gallons 500

1st 24 hours after acid Flowed 158 barrels (3/8" choke)

2nd 24 hours after acid

FORMATION AND CASING RECORD

Formation	Top	Bottom	Top Pay	Bottom Pay	Remarks	Casing	
						Size	Set at
Brown Dolomite	1109	S.L.M.	(-354)			10"	378
Mich. Stray	1250	(-495)			Show gas 1252.	8-1/4"	726
Marshall	1307	1480	(-552)		(-499)	6-5/8"	1530
Sunbury	2462	(-1707)				5-3/16"	3647
Berea	?				Show gas 2535. (-1780)		
Antrim	?	2971	S.L.M.	(-2216)			
Traverse Lime	2991	S.L.M.	(-2236)		Show oil and gas		
<i>Traverse</i> Dundee (-2880)	2971	(-2216)		(-2921)	3089-3095. (-2334)		
Dundee	3635	S.L.M.	3682	3686			
Total Depth		3686	(-2931)				

Remarks 2983' equals 2981' S.L.M.; 3631' equals 3633' S.L.M.

Signed D. C. Shackelford