



Western Michigan University  
ScholarWorks at WMU

---

Legacy Scout Tickets from Pure Oil Company

---

8-20-2021

**MGRRE\_PureOilScoutTickets\_St. John, Royal  
M\_1\_21073114420000**

MGRRE

*Western Michigan University*

Follow this and additional works at: <https://scholarworks.wmich.edu/pure>



Part of the Geology Commons

---

#### **WMU ScholarWorks Citation**

MGRRE, "MGRRE\_PureOilScoutTickets\_St. John, Royal M\_1\_21073114420000" (2021). *Legacy Scout Tickets from Pure Oil Company*. 3688.

<https://scholarworks.wmich.edu/pure/3688>

This Document is brought to you for free and open access via ScholarWorks at WMU. It has been accepted for inclusion in Legacy Scout Tickets from Pure Oil Company by an authorized administrator of ScholarWorks at WMU. See the National Digital Catalogue - Science Base Catalogue for more collections submitted by MGRRE.



---

**MGRRE\_PureOilScoutTickets\_St. John, Royal M\_1\_21073114420000**

API 21073114420000

Permit Number 11442

Lease Name St. John, Royal M

Well Number 1

County Isabella

Township 16N

Range 06W

Section 28

2021 DEQ or Pure co\_name Collin, C. W.

Pure Number 1008

Latitude 43.75087

Longitude -85.04074

THE PURE OIL COMPANY

LOCATION REPORT

Date April 4, 1945 A.F.E. No. \_\_\_\_\_

Division Mich. Producing District \_\_\_\_\_ Lease Royal M. St. John

Acres \_\_\_\_\_ Lease No. 28 Elevation \_\_\_\_\_ Well No. 1 (Serial No. 1008)

Quadrangle C N<sub>2</sub> SE NW Sec. 28 Twp. 16 N Rge. 6 W Twp. Coldwater

Survey \_\_\_\_\_ County Isabella State Michigan

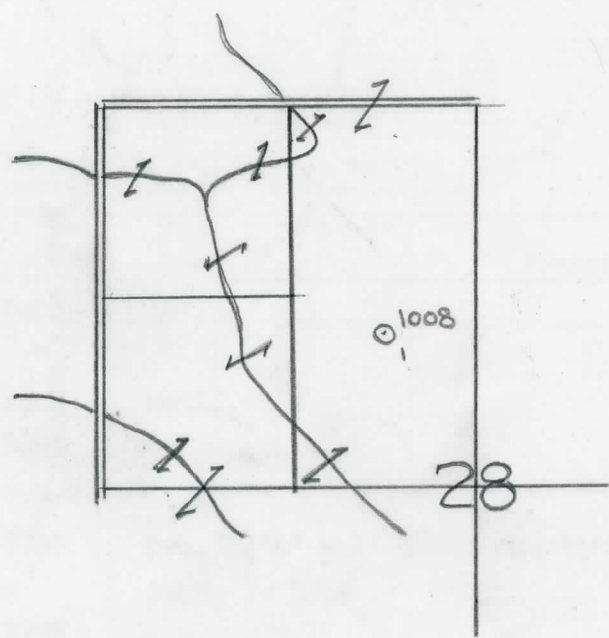
Operator Sun Oil Co Map Coldwater Twp. Isabella Co.

Feet from North Line of Lease	
<u>660</u>	<u>660</u>
" "	East " " "
<u>990</u>	<u>990</u>
" "	South " " "
" "	West " " "
Feet from North Line of Section	
<u>660</u>	<u>660</u>
" "	East " " <u>1/4</u>
<u>990</u>	<u>990</u>
" "	South " " "
" "	West " " "

Low

LEGEND

- Location
- ☀ Gas Well
- Oil Well
- ☀ Gas - Distillate Well
- or ○ Dry Hole
- Dry Showing Oil
- ☀ Dry Showing Gas
- ⊗ Abandoned Location
- ☀ or ☀ Abandoned Gas Well
- or ● Abandoned Oil Well
- or ○ Input Well



Scale \_\_\_\_\_

Remarks: \_\_\_\_\_

Submitted by RN Civil Engineer Approved by \_\_\_\_\_ Division Manager

Approved by \_\_\_\_\_ Vice-President - General Manager

Michigan Producing Division

Date **June 6, 1945** No. **1008**  
 State **Mich.** County **Isabella** District **Coldwater** Twp. **16 N** Rge. **6 W**  
 (Serial No.)  
 Well No. **1** (Country No.) **1008** Farm **R. M. St. John** Acres  
 Operator **Sun Oil Company** Information secured **By Scouting Department**  
 Date well started **4-21-45** Date well completed **5-19-45** Elevation **966.9**

PRODUCTION BOARD

1st 24 hours natural **Est. Potential - 1548 Bbls.**  
 2nd 24 hours natural  
 Date of shot No. of quarts From To From to  
 Date of acid No. of gallons  
 shot  
 1st 24 hours after acid  
 shot  
 2nd 24 hours after acid

FORMATION AND CASING RECORD

Formation	Top	Bottom	Top Pay	Bottom Pay	Remarks	Casing	
						Size	Set at
Brown Dolomite	1260	Schl.	(-293)			13-3/8"	39
Mich. Stray	1362	"	(-395)			8-5/8"	678
Marshall	(1-680)	1648	Schl.			5-3/16"	3691
Traverse Lime	3111	Schl.	(-2144)				
Dundee	3694	S.L.M.	(-2727)				
Cored:	3690	3708	Rec. 12'4" - 1'		Shale and 11'4" Dolomite.		
Total Depth		3708	3695	3708	(-2728)		

Remarks **Schlumberger survey at 3143 - flowed 129 bbls. 1st. 2 hrs. pinched thru tubing. 1375' equals 1375' S.L.M.; 3598' equals 3598' S.L.M.**

Signed **D. C. Shackelford**