



Western Michigan University  
ScholarWorks at WMU

---

Legacy Scout Tickets from Pure Oil Company

---

8-20-2021

**MGRRE\_PureOilScoutTickets\_Fox, Alex\_1\_21073116160000**

MGRRE

*Western Michigan University*

Follow this and additional works at: <https://scholarworks.wmich.edu/pure>



Part of the Geology Commons

---

#### **WMU ScholarWorks Citation**

MGRRE, "MGRRE\_PureOilScoutTickets\_Fox, Alex\_1\_21073116160000" (2021). *Legacy Scout Tickets from Pure Oil Company*. 3704.

<https://scholarworks.wmich.edu/pure/3704>

This Document is brought to you for free and open access via ScholarWorks at WMU. It has been accepted for inclusion in Legacy Scout Tickets from Pure Oil Company by an authorized administrator of ScholarWorks at WMU. See the National Digital Catalogue - Science Base Catalogue for more collections submitted by MGRRE.



---

**MGRRE\_PureOilScoutTickets\_Fox, Alex\_1\_21073116160000**

API 21073116160000

Permit Number 11616

Lease Name Fox, Alex

Well Number 1

County Isabella

Township 13N

Range 05W

Section 16

2021 DEQ or Pure co\_name Columbia Oil and Gas Company

Pure Number 1024

Latitude 43.51685

Longitude -84.91346

# THE PURE OIL COMPANY LOCATION REPORT

Date June 20, 1945

A.F.E. No. \_\_\_\_\_

Alex Fox

Division Mich. Producing District \_\_\_\_\_

Lease Alex Fox

Acres \_\_\_\_\_ Lease No. \_\_\_\_\_

Elevation \_\_\_\_\_

Well No. 1

(Serial No. 1024)

Quadrangle C N<sup>1</sup>/<sub>2</sub> - NW - SE

Sec. 16

Twp. 13 N

Rge. 5 W

~~XBox~~  
~~XDist.~~  
Twp. Fremont

Fremont

Survey \_\_\_\_\_ County Isabella

State Michigan

Operator Columbia Oil & Gas Company

Map Fremont Twp - Isabella Co.  
Fremont Township, Isabella County

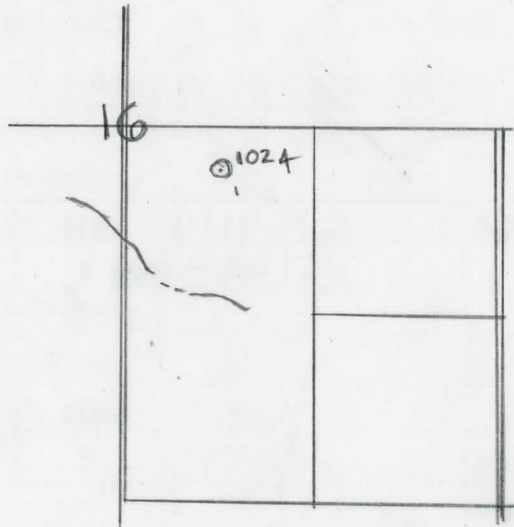
<u>330</u>	<u>330</u>	Feet from North Line of Lease
<u>660</u>	<u>660</u>	" " East " " "
		" " South " " "
<u>660</u>	<u>660</u>	" " West " " <u>1/4</u>
<u>330</u>	<u>330</u>	Feet from North Line of Section
		" " East " " "
		" " South " " "
<u>660</u>	<u>660</u>	" " West " " "

### LEGEND

○ Location

- ☀ Gas Well
- Oil Well
- ☀ Gas - Distillate Well
- or ○ Dry Hole
- Dry Showing Oil
- ☀ Dry Showing Gas
- ⊗ Abandoned Location
- ☀ or ☀ Abandoned Gas Well
- or ● Abandoned Oil Well
- or ○ Input Well

*Me 300  
sp 6-13-45*



Scale \_\_\_\_\_

Remarks: \_\_\_\_\_  
\_\_\_\_\_  
\_\_\_\_\_

Submitted by \_\_\_\_\_  
Civil Engineer

Approved by \_\_\_\_\_  
Division Manager

Approved by \_\_\_\_\_  
Vice-President - General Manager

COMPLETION RECORD OF WELLS DRILLED BY OTHER OPERATORS

Michigan Producing Division

Date August 22, 1945 No. 1024  
 State Michigan Co. Isabella District  
 Twp. Fremont Sec. 16 Twp. 13 N Rge. 5 W  
 Well No. 1 Serial No. 1024 Farm Alex Fox Acres  
 Operator Columbia Oil & Gas Company  
 Date started 6-13-45 Date completed 8-14-45 Elevation 860.0

PRODUCTION RECORD

1st 24 hours natural  
 Date of shot No. of quarts From To From to  
 Date of acid No. of gallons shot  
 1st 24 hours after acid  
 Completed as: Oil Well Gas Well Dry Hole **X**

FORMATION AND CASING RECORD

Formation	Top	Bottom	Top Pay	Bottom Pay	Remarks	Casing	
						Size	Set at
Brown Dolomite	1184	SLM.	(-324)		See remarks below.	10"	542
Marshall	1296	"	1537 (-436)			8-1/4"	947
Sunbury	2512		(-1652)			6-5/8"	1541
Antrim	2562		(-1702)			5-3/16"	3554
Traverse Lime	3030	SLM.	(-2170)				
Dundee	3583	"	(-2723)		2500 Ft. S.W. in one hour 3601 to 3603.	(-2741)	
Total Depth		3603	(-2743)				

Remarks 1180' equals 1183' SLM; 3035' equals 3042' SLM; 3607' equals 3603 SLM.  
Flowing fresh water 912-924; 1 bailer salt water per hour 1110 S.L.M.; small show gas 1297-1303; 400 ft. salt water 1326 to 1335.  
 (-437) (-466) (-250)

Signed D. C. Shackelford