



Western Michigan University
ScholarWorks at WMU

Legacy Scout Tickets from Pure Oil Company

8-20-2021

**MGRRE_PureOilScoutTickets_St. John, Royal M.,
"B"_1_21073102390000**

MGRRE
Western Michigan University

Follow this and additional works at: <https://scholarworks.wmich.edu/pure>



Part of the Geology Commons

WMU ScholarWorks Citation

MGRRE, "MGRRE_PureOilScoutTickets_St. John, Royal M., "B"_1_21073102390000" (2021). *Legacy Scout Tickets from Pure Oil Company*. 3711.
<https://scholarworks.wmich.edu/pure/3711>

This Document is brought to you for free and open access via ScholarWorks at WMU. It has been accepted for inclusion in Legacy Scout Tickets from Pure Oil Company by an authorized administrator of ScholarWorks at WMU. See the National Digital Catalogue - Science Base Catalogue for more collections submitted by MGRRE.



MGRRE_PureOilScoutTickets_St. John, Royal M., "B"_1_21073102390000

API 21073102390000

Permit Number 10239

Lease Name St. John, Royal M., "B"

Well Number 1

County Isabella

Township 16N

Range 06W

Section 21

2021 DEQ or Pure co_name Collin, C. W.

Pure Number 1031

Latitude 43.7581399

Longitude -85.0408297

THE PURE OIL COMPANY LOCATION REPORT

Date June 27, 1945 A.F.E. No. _____

Division Mich. Producing District _____ Lease Royal M. St. John

Acres _____ Lease No. _____ Elevation _____ Well No. B-1 (Serial No. 1031)

Quadrangle C N 1/2 SE SW Sec. 21 Twp. 16 N Rge. 6 W ~~Dist~~ Twp. Coldwater

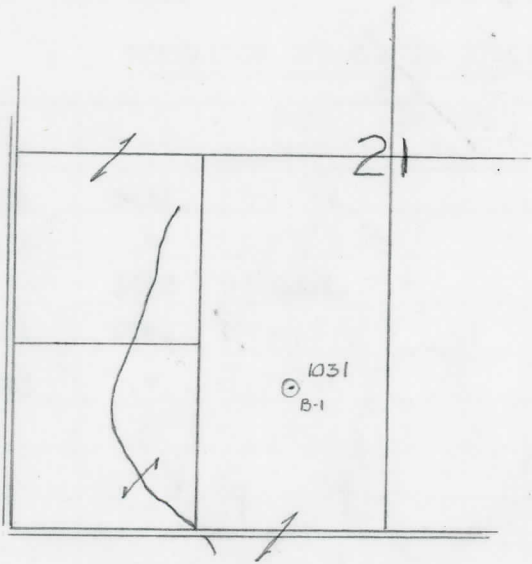
Survey _____ County Isabella State Michigan

Operator Sun Oil Co. Map Coldwater Twp, Isabella Co.

Feet from North Line of Lease	
<u>660</u>	<u>660</u>
" "	East " " "
<u>990</u>	<u>990</u>
" "	South " " "
" "	West " " "
Feet from North Line of Section	
<u>660</u>	<u>660</u>
" "	East " <u>1/4</u> "
<u>990</u>	<u>990</u>
" "	South " " "
" "	West " " "

LEGEND

- Location
- ☉ Gas Well
- Oil Well
- ☼ Gas - Distillate Well
- or ○ Dry Hole
- Dry Showing Oil
- ☉ Dry Showing Gas
- ⊗ Abandoned Location
- ☼ or ☼ Abandoned Gas Well
- or ● Abandoned Oil Well
- or ○ Input Well



Scale _____

Remarks: _____

Submitted by _____ Approved by _____

Civil Engineer

Division Manager

Approved by _____

Vice-President - General Manager

Date

1945 9 19

District

LOCATION BEBOBT

V.E.E. NO.

COMPLETION RECORD OF WELLS DRILLED BY OTHER OPERATORS

Michigan Producing Division

Date September 19, 1945

No. 1031

State Michigan Co. Isabella Twp. Coldwater Sec. 21 Twp. 16 N Rge. 6 W

Well No. B-1 Serial No. 1031 Farm R. M. St. John Acres

Operator Sun Oil Company

Date started 8-1-45 Date completed 9-14-45 Elevation 995.2

PRODUCTION RECORD

1st 24 hours natural

Date of shot No. of quarts From To From to

Date of acid No. of gallons

shot
1st 24 hours after acid

Completed as: Oil Well Gas Well Dry Hole X

FORMATION AND CASING RECORD

Formation	Top	Bottom	Top Pay	Bottom Pay	Remarks	Casing	
						Size	Set at
Brown Dolomite	1324	Schl.	(-329)			10"	165
Mich. Stray	1433	"	(-438)			6-5/8"	1739
Marshall	(-115)	1710	Schl.			5-3/16"	3758
Traverse Line	3171	OTM.	(-276)				
Dundee	3763	"	(-2748)		Small show oil 3769-3770. (-2774)		
					3 ba. salt water 3770-3772. (-2775)		
Total Depth		3796	(-2801)				

Remarks Well to be used for salt water disposal.
3006' equals 3014' SLM.

Signed D. C. Shackelford