



Western Michigan University
ScholarWorks at WMU

Legacy Scout Tickets from Pure Oil Company

8-20-2021

**MGRRE_PureOilScoutTickets_Sisco, Floyd, et
al_2_21073116910000**

MGRRE
Western Michigan University

Follow this and additional works at: <https://scholarworks.wmich.edu/pure>



Part of the Geology Commons

WMU ScholarWorks Citation

MGRRE, "MGRRE_PureOilScoutTickets_Sisco, Floyd, et al_2_21073116910000" (2021). *Legacy Scout Tickets from Pure Oil Company*. 3714.
<https://scholarworks.wmich.edu/pure/3714>

This Document is brought to you for free and open access via ScholarWorks at WMU. It has been accepted for inclusion in Legacy Scout Tickets from Pure Oil Company by an authorized administrator of ScholarWorks at WMU. See the National Digital Catalogue - Science Base Catalogue for more collections submitted by MGRRE.



MGRRE_PureOilScoutTickets_Sisco, Floyd, et al_2_21073116910000

API 21073116910000

Permit Number 11691

Lease Name Sisco, Floyd, et al

Well Number 2

County Isabella

Township 16N

Range 06W

Section 33

2021 DEQ or Pure co_name A N R Pipeline Company

Pure Number 1034

Latitude 43.73644

Longitude -85.03043

THE PURE OIL COMPANY

LOCATION REPORT

Date July 25, 1945

A.F.E. No. _____

Division Mich. Producing

District _____

Lease Floyd Sisco, et al
Floyd Sisco, et al

Acres _____

Lease No. _____

Elevation _____

Well No. 2

(Serial No. 1034)

Quadrangle N 1/2 SE NE

33

Sec. 33

Twp. 16 N

Rge. 6 W

~~Blk~~
~~Dist~~

Coldwater
Coldwater

Survey _____

County Isabella

State Michigan

Operator Sohio Petroleum Company

Map Coldwater Township, Isabella County

Feet from North Line of Lease

66660

" " East " " "

99990

" " South " " "

330

" " West " " "

99990

Feet from North Line of Section

66660

" " East " " 1/4

99990

" " South " " "

" " West " " "

LEGEND

○ Location

☀ Gas Well

☉ Dry Showing Gas

● Oil Well

⊗ Abandoned Location

☀ Gas - Distillate Well

☀ or ☀ Abandoned Gas Well

○ or ○ Dry Hole

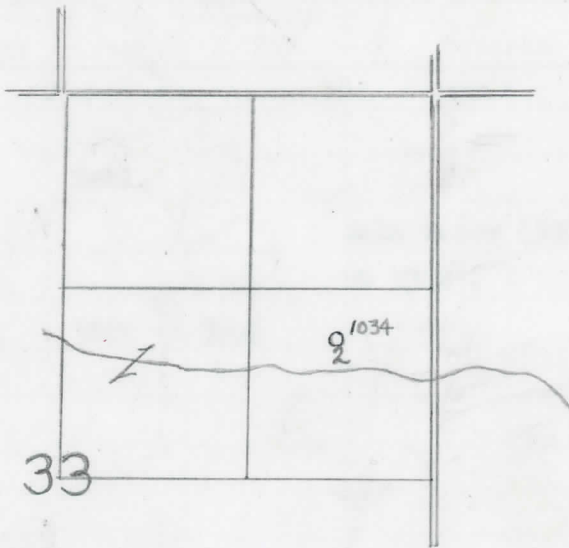
● or ● Abandoned Oil Well

● Dry Showing Oil

● or ○ Input Well

*h³ woods 5"
w² 7-22
sp 10" 621*

N



Scale _____

Remarks: _____

Submitted by _____
Civil Engineer

Approved by _____
Division Manager

Approved by _____
Vice-President - General Manager

COMPLETION RECORD OF WELLS DRILLED BY OTHER OPERATORS

Michigan Producing Division

Date September 6, 1945 No. 1034
 State Mich. Co. Isabella District Coldwater Sec. 33 Twp. 16 N Rge. 6 W
 Well No. 2 Serial No. 1034 Farm Floyd Sisco, et al Acres _____
 Operator Sohio Petroleum Company
 Date started 7-22-45 Date completed 8-30-45 Elevation 956.8

PRODUCTION RECORD

Estimated potential - 904 bbls.

1st 24 hours natural
 Date of shot No. of quarts From To From to
 Date of acid No. of gallons shot
 1st 24 hours after acid
 Completed as: Oil Well Gas Well _____ Dry Hole _____

FORMATION AND CASING RECORD

Formation	Top	Bottom	Top Pay	Bottom Pay	Remarks	Casing	
						Size	Set at
Brown Dolomite	1270	Schl.	(-313)			10"	621
Mich. Stray	1380	"	(-423)			6-5/8"	1731
Marshall	(-710)	1667	Schl.			5-3/16"	3702
Traverse Line	3140	(-2183)			Salt water (500 ft.)		
Dundee	3697	(-740) SLM.	3699	(-2742) 3706	at 3348'. (-2391)		
Total Depth		3706	(-2749)				

Remarks Flowed 113 barrels 1st. 3 hours natural - open thru casing.
3696' equals 3702' SLM.

Signed D. C. Shackelford