



Western Michigan University  
ScholarWorks at WMU

---

Legacy Scout Tickets from Pure Oil Company

---

8-20-2021

**MGRRE\_PureOilScoutTickets\_Cheadle, Emerson  
B\_1\_21073117220000**

MGRRE  
*Western Michigan University*

Follow this and additional works at: <https://scholarworks.wmich.edu/pure>



Part of the Geology Commons

---

#### **WMU ScholarWorks Citation**

MGRRE, "MGRRE\_PureOilScoutTickets\_Cheadle, Emerson B\_1\_21073117220000" (2021). *Legacy Scout Tickets from Pure Oil Company*. 3718.

<https://scholarworks.wmich.edu/pure/3718>

This Document is brought to you for free and open access via ScholarWorks at WMU. It has been accepted for inclusion in Legacy Scout Tickets from Pure Oil Company by an authorized administrator of ScholarWorks at WMU. See the National Digital Catalogue - Science Base Catalogue for more collections submitted by MGRRE.



---

**MGRRE\_PureOilScoutTickets\_Cheadle, Emerson B\_1\_21073117220000**

API 21073117220000

Permit Number 11722

Lease Name Cheadle, Emerson B

Well Number 1

County Isabella

Township 16N

Range 06W

Section 33

2021 DEQ or Pure co\_name A N R Pipeline Company

Pure Number 1038

Latitude 43.7328

Longitude -85.03537

# THE PURE OIL COMPANY LOCATION REPORT

Date August 8, 1945

A.F.E. No. \_\_\_\_\_

Division Mich. Producing District \_\_\_\_\_ Lease Emerson B. Cheadle

Acres \_\_\_\_\_ Lease No. \_\_\_\_\_ Elevation \_\_\_\_\_ Well No. 1 (Serial No. 1038)

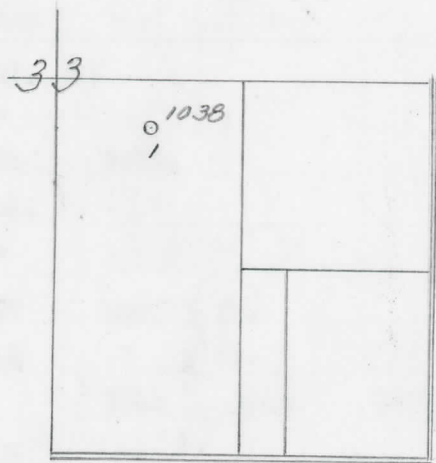
Quadrangle C N<sup>1</sup>/<sub>2</sub> NW SE Sec. 33 Twp. 16 N Rge. 6 W Twp. Coldwater

Survey \_\_\_\_\_ County Isabella State Michigan

Operator Sohio Petroleum Company Map Coldwater Township, Isabella County

_____	<u>330</u>	Feet from North Line of Lease
_____	" "	East " " "
_____	" "	South " " "
_____	<u>660</u>	" " West " " "
_____	<u>330</u>	Feet from North Line of Section <u>1/4</u>
_____	" "	East " " "
_____	" "	South " " "
_____	<u>660</u>	" " West " " "

- LEGEND**
- Location
  - ☀ Gas Well
  - Oil Well
  - ☀ Gas - Distillate Well
  - or ○ Dry Hole
  - Dry Showing Oil
  - ☀ Dry Showing Gas
  - ⊖ Abandoned Location
  - ☀ or ☀ Abandoned Gas Well
  - or ● Abandoned Oil Well
  - or ○ Input Well



Remarks: \_\_\_\_\_

\_\_\_\_\_

\_\_\_\_\_

\_\_\_\_\_

Scale \_\_\_\_\_

Submitted by \_\_\_\_\_ Approved by \_\_\_\_\_  
 Civil Engineer Division Manager

Approved by \_\_\_\_\_  
 Vice-President - General Manager

*DP474*

Michigan Producing Division

Date October 3, 1945 No. 1038  
 State Michigan Co. Isabella Dist. Coldwater Twp. 16 N Rge. 6 W Sec. 33  
 Well No. 1 Serial No. 1038 Farm Emerson B. Cheadle Acres \_\_\_\_\_  
 Operator Sohio Petroleum Company

Date started 8-3-45 Date completed 9-26-45 Elevation 970.5  
49.48

PRODUCTION RECORD

1st 24 hours natural 800 ft. oil in hole.  
 Date of shot \_\_\_\_\_ No. of quarts \_\_\_\_\_ From \_\_\_\_\_ To \_\_\_\_\_ From \_\_\_\_\_ to \_\_\_\_\_  
 Date of acid 9-14-45 No. of gallons 200  
 1st 24 hours after acid Pumped 9 bbls. gross and 60 bbls. salt water.  
 Completed as: Oil Well \_\_\_\_\_ Gas Well \_\_\_\_\_ Dry Hole X

FORMATION AND CASING RECORD

Formation	Top	Bottom	Top Pay	Bottom Pay	Remarks	Casing	
						Size	Set at
<i>Top</i> Brown Dolomite	1299	Schl.	(-328)			10"	710
Mich. Stray	1395	"	(-424)			5-3/16"	3736
<i>B.</i> Marshall	(-733)	1704	Schl.				
<i>Top</i> Traverse Lime	3156	Schl.	(-2185)				
<i>Top</i> Dundee	3738	"	(-2767)				
Cored:	3734	3739	Rec. 5 ft.				
"	3739	3744	" 5 ft.				
			3744	3746	(-2773)	3000 ft. S.W. 3746-3771	(-2775)
Total Depth.		3808	(-2837)				

Drilled To New Total Depth of 3986 Comp 4/9/48

*Top - 812* Small Show Oil Gas and 200' Salt Water 3944

Top Det. River Dol. 3976 - Now Being Used As A Brine Disposal Well.

Remarks Well went practically to all salt water after acid - the hole was then deepened to 3808' where it has been completed to be used for salt water disposal.

Signed D. C. Shackelford