



Western Michigan University
ScholarWorks at WMU

Legacy Scout Tickets from Pure Oil Company

8-20-2021

MGRRE_PureOilScoutTickets_Biesen, Chas_1_na

MGRRE

Western Michigan University

Follow this and additional works at: <https://scholarworks.wmich.edu/pure>



Part of the Geology Commons

WMU ScholarWorks Citation

MGRRE, "MGRRE_PureOilScoutTickets_Biesen, Chas_1_na" (2021). *Legacy Scout Tickets from Pure Oil Company*. 3721.

<https://scholarworks.wmich.edu/pure/3721>

This Document is brought to you for free and open access via ScholarWorks at WMU. It has been accepted for inclusion in Legacy Scout Tickets from Pure Oil Company by an authorized administrator of ScholarWorks at WMU. See the National Digital Catalogue - Science Base Catalogue for more collections submitted by MGRRE.



MGRRE_PureOilScoutTickets_Biesen, Chas_1_na

API na

Permit Number na

Lease Name Biesen, Chas

Well Number 1

County Isabella

Township 16N

Range 06W

Section 28

2021 DEQ or Pure co_name Sun Oil Co

Pure Number 1041

Latitude 43.7481665

Longitude -85.0382171

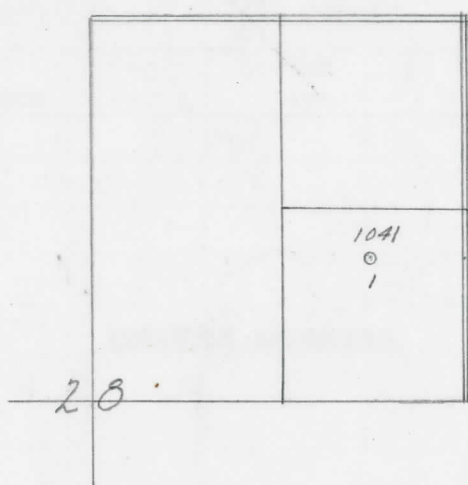
THE PURE OIL COMPANY LOCATION REPORT

Date August 20, 1945 A.F.E. No. _____
 Division Mich. Producing District _____ Lease Charles C. Blesch
 Acres _____ Lease No. 11746 Elevation _____ Well No. 1 (Serial No. 1041)
 Quadrangle C N 1/2 SE NE Sec. 28 Twp. 16 N Rge. 6 W Twp. Coldwater
 Survey _____ County Isabella State Michigan
 Operator Sun Oil Company Map Coldwater Township, Isabella County

<u>330</u>	<u>330</u>	Feet from North Line of Lease
<u>660</u>	<u>660</u>	“ “ East “ “ “
_____	_____	“ “ South “ “ “
_____	_____	“ “ West “ “ “
<u>660</u>	<u>660</u>	Feet from North Line of Section
<u>990</u>	<u>990</u>	“ “ East “ <u>2/4</u> “
_____	_____	“ “ South “ “ “
_____	_____	“ “ West “ “ “

LEGEND

- Location
- ☀ Gas Well
- Oil Well
- ☀ Gas - Distillate Well
- ∅ or ○ Dry Hole
- Dry Showing Oil
- ☀ Dry Showing Gas
- ⊗ Abandoned Location
- ☀ or ⊗ Abandoned Gas Well
- or ● Abandoned Oil Well
- or ○ Input Well



Remarks: _____

Submitted by _____ Civil Engineer
 Approved by _____ Division Manager
 Approved by _____ Vice-President - General Manager

Scale _____

