



Western Michigan University  
ScholarWorks at WMU

---

Legacy Scout Tickets from Pure Oil Company

---

8-20-2021

**MGRRE\_PureOilScoutTickets\_Strong, B. A. & Overdorf, J.  
P.\_1\_21073117840000**

MGRRE  
*Western Michigan University*

Follow this and additional works at: <https://scholarworks.wmich.edu/pure>



Part of the Geology Commons

---

#### **WMU ScholarWorks Citation**

MGRRE, "MGRRE\_PureOilScoutTickets\_Strong, B. A. & Overdorf, J. P.\_1\_21073117840000" (2021). *Legacy Scout Tickets from Pure Oil Company*. 3724.  
<https://scholarworks.wmich.edu/pure/3724>

This Document is brought to you for free and open access via ScholarWorks at WMU. It has been accepted for inclusion in Legacy Scout Tickets from Pure Oil Company by an authorized administrator of ScholarWorks at WMU. See the National Digital Catalogue - Science Base Catalogue for more collections submitted by MGRRE.



---

**MGRRE\_PureOilScoutTickets\_Strong, B. A. & Overdorf, J. P.\_1\_21073117840000**

API 21073117840000

Permit Number 11784

Lease Name Strong, B. A. & Overdorf, J. P.

Well Number 1

County Isabella

Township 15N

Range 06W

Section 18

2021 DEQ or Pure co\_name Jetter, C B and DeKraaft

Pure Number 1044

Latitude 43.68367

Longitude -85.08135

# THE PURE OIL COMPANY

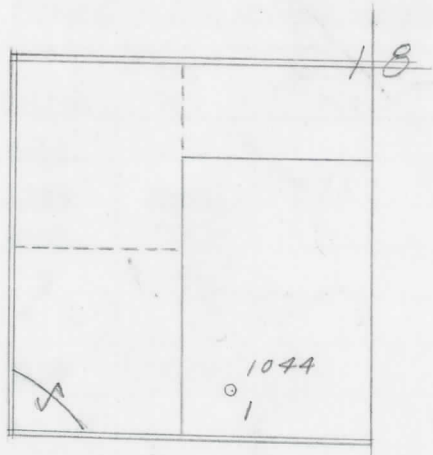
## LOCATION REPORT

Date August 29, 1945 A.F.E. No. B. A. Strong & J. P. Overdorf  
 Division Mich. Producing District \_\_\_\_\_ Lease B. A. Strong & J. P. Overdorf  
 Acres \_\_\_\_\_ Lease No. \_\_\_\_\_ Elevation \_\_\_\_\_ Well No. 1 (Serial No. 1044)  
 Quadrangle SW-SE-SW Sec. 18 Twp. 15 N Rge. 6 W ~~EXC~~ ~~RISK~~ SHERMAN  
 Survey \_\_\_\_\_ County Isabella State Michigan  
 Operator Jetter & deKrafft Map Sherman Township, Isabella County

		Feet from North Line of Lease			
		" "	East	" "	" "
<u>330</u>	<u>330</u>	" "	South	" "	" "
<u>330</u>	<u>330</u>	" "	West	" "	" "
		Feet from North Line of Section			
<u>990</u>	<u>990</u>	" "	East	" "	<u>1/4</u>
<u>330</u>	<u>330</u>	" "	South	" "	" "
		" "	West	" "	" "

### LEGEND

- Location
- ☀ Gas Well
- Oil Well
- ☀ Gas - Distillate Well
- ∅ or ○ Dry Hole
- Dry Showing Oil
- ☀ Dry Showing Gas
- ⊗ Abandoned Location
- ☀ or ☀ Abandoned Gas Well
- or ● Abandoned Oil Well
- or ○ Input Well



Remarks: \_\_\_\_\_  
 \_\_\_\_\_  
 \_\_\_\_\_

Scale \_\_\_\_\_

Submitted by \_\_\_\_\_ Civil Engineer Approved by \_\_\_\_\_ Division Manager  
 Approved by \_\_\_\_\_ Vice-President - General Manager

COMPLETION RECORD OF WELLS DRILLED BY OTHER OPERATORS

Michigan Producing Division

Date August 14, 1946 No. 1044  
 State Michigan Co. Isabella District Sherman Twp. 18 Sec. 18 Twp. 15 N Rge. 6 W  
 Well No. 1 Serial No. 1044 Farm Strong & Overdorf Acres \_\_\_\_\_  
 Operator Jetter and deKrafft  
 Date started 10-11-45 Date completed 7-9-46 Elevation 984.4

PRODUCTION RECORD

1st 24 hours natural \_\_\_\_\_  
 Date of shot \_\_\_\_\_ No. of quarts \_\_\_\_\_ From \_\_\_\_\_ To \_\_\_\_\_  
 Date of acid \_\_\_\_\_ No. of gallons \_\_\_\_\_  
 1st 24 hours after acid \_\_\_\_\_  
 Completed as: Oil Well \_\_\_\_\_ Gas Well \_\_\_\_\_ Dry Hole X

FORMATION AND CASING RECORD

Formation	Top	Bottom	Top Pay	Bottom Pay	Remarks	Casing	
						Size	Set at
Brown Dolomite	1323	Schl.	(-339)			12-3/4"	65
Stray Stray	1359	1365	Schl.	(-375)		8-1/4"	1530
Mich. Stray	1421	Schl.	(-437)			6-5/8"	1775
Marshall	1480	?	(-496)			Liner	
Sunbury	2546	(-1562)					
Antrim	2586	3107	(-1602)				
Traverse Lime	3190	(-2206)			Very small show gas 3200; show gas 3268. (-2284)		
Total Depth		3310	(-2326)				

Remarks No salt water reported.

Signed D. C. Shackelford