



Western Michigan University
ScholarWorks at WMU

Legacy Scout Tickets from Pure Oil Company

8-20-2021

**MGRRE_PureOilScoutTickets_Conley, Raymond
F._1_21073117850000**

MGRRE
Western Michigan University

Follow this and additional works at: <https://scholarworks.wmich.edu/pure>



Part of the Geology Commons

WMU ScholarWorks Citation

MGRRE, "MGRRE_PureOilScoutTickets_Conley, Raymond F._1_21073117850000" (2021). *Legacy Scout Tickets from Pure Oil Company*. 3725.
<https://scholarworks.wmich.edu/pure/3725>

This Document is brought to you for free and open access via ScholarWorks at WMU. It has been accepted for inclusion in Legacy Scout Tickets from Pure Oil Company by an authorized administrator of ScholarWorks at WMU. See the National Digital Catalogue - Science Base Catalogue for more collections submitted by MGRRE.



MGRRE_PureOilScoutTickets_Conley, Raymond F._1_21073117850000

API 21073117850000

Permit Number 11785

Lease Name Conley, Raymond F.

Well Number 1

County Isabella

Township 16N

Range 06W

Section 23

2021 DEQ or Pure co_name Union Drilling and Producing Company

Pure Number 1045

Latitude 43.75993

Longitude -85.00229

THE PURE OIL COMPANY LOCATION REPORT

Date August 29, 1945

A.F.E. No. _____

Division Mich. Producing District _____

Lease RAYMOND F. CONLEY
Raymond F. Conley

Acres _____ Lease No. 23 Elevation _____ Well No. 1 (Serial No. 1045)

Quadrangle SW NE SW Sec. 23 Twp. 16 N Rge. 6 W Twp. Coldwater

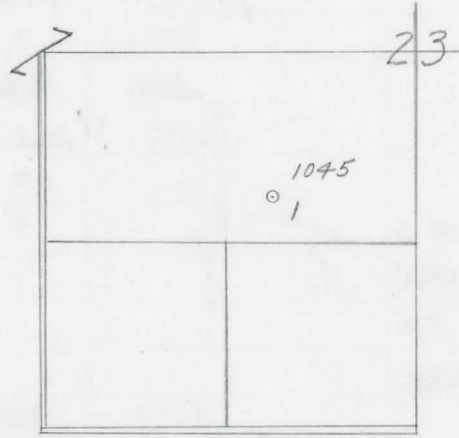
Survey _____ County Isabella State Michigan

Operator Union Drilling & Producing Co. Map Coldwater Township, Isabella County

<u>990</u>	<u>990</u>	Feet from North	Line of Lease
<u>990</u>	<u>990</u>	" " East	" " "
		" " South	" " "
		" " West	" " "
<u>990</u>	<u>990</u>	Feet from North	Line of Section
<u>990</u>	<u>990</u>	" " East	" " "
		" " South	" " "
		" " West	" " "

LEGEND

- Location
- ☀ Gas Well
- Oil Well
- ☀ Gas - Distillate Well
- or ○ Dry Hole
- Dry Showing Oil
- ☀ Dry Showing Gas
- ⊗ Abandoned Location
- ☀ or ☀ Abandoned Gas Well
- or ● Abandoned Oil Well
- or ○ Input Well



Scale _____

Remarks: _____

Submitted by _____ Civil Engineer Approved by _____ Division Manager

Approved by _____ Vice-President - General Manager

THE PURE OIL COMPANY

The Pure Oil Company

COMPLETION RECORD OF WELLS DRILLED BY OTHER OPERATORS

Michigan Producing Division

Date **November 14, 1945** No. **1045**

State **Michigan** Co. **Isabella** Twp. **Coldwater** Sec. **23** Twp. **16 N** Rge. **6 W**

Well No. **1** Serial No. **1045** Farm **Raymond F. Conley** Acres

Operator **Union Drilling and Producing Company**

Date started **9-19-45** Date completed **11-8-45** Elevation **1000.7**

PRODUCTION RECORD

1st 24 hours natural

Date of shot No. of quarts From To From to

Date of acid No. of gallons shot

1st 24 hours after acid

Completed as: Oil Well Gas Well Dry Hole **X**

FORMATION AND CASING RECORD

Formation	Top	Bottom	Top Pay	Bottom Pay	Remarks	Casing	
						Size	Set at
Brown Dolomite	1431	Schl.	(-430)			10"	126
Mich. Stray	1551	"	(-550)			6-5/8"	1851
Marshall	(-799)	1800	Schl.			5-3/16"	3862
Sunbury	2681	S.L.M.	(-1680)				
Traverse Lime	3269	"	(-2248)				
Dundee	3862	"	(-2862)		1 ba. salt water		
				(-2861)	3862-3870; 1300 ft.		
					S.W. in 12 hrs. from		
					3870-3880. (-2869)		
Total Depth		3899	(-2898)				

Remarks **1275' equals 1285' SIM; 3839' equals 3808' SIM.**

Signed **D. C. Shackelford**