



Western Michigan University  
ScholarWorks at WMU

---

Legacy Scout Tickets from Pure Oil Company

---

8-20-2021

## MGRRE\_PureOilScoutTickets\_Gilmore Gas Unit Communitized\_1\_21073118490000

MGRRE

*Western Michigan University*

Follow this and additional works at: <https://scholarworks.wmich.edu/pure>



Part of the Geology Commons

---

### WMU ScholarWorks Citation

MGRRE, "MGRRE\_PureOilScoutTickets\_Gilmore Gas Unit Communitized\_1\_21073118490000" (2021).

*Legacy Scout Tickets from Pure Oil Company*. 3728.

<https://scholarworks.wmich.edu/pure/3728>

This Document is brought to you for free and open access via ScholarWorks at WMU. It has been accepted for inclusion in Legacy Scout Tickets from Pure Oil Company by an authorized administrator of ScholarWorks at WMU. See the National Digital Catalogue - Science Base Catalogue for more collections submitted by MGRRE.



---

**MGRRE\_PureOilScoutTickets\_Gilmore Gas Unit  
Communitized\_1\_21073118490000**

API 21073118490000

Permit Number 11849

Lease Name Gilmore Gas Unit Communitized

Well Number 1

County Isabella

Township 16N

Range 05W

Section 25

2021 DEQ or Pure co\_name Sohio Petroleum Company

Pure Number 1048

Latitude 43.7532

Longitude -84.86476

# THE PURE OIL COMPANY

## LOCATION REPORT

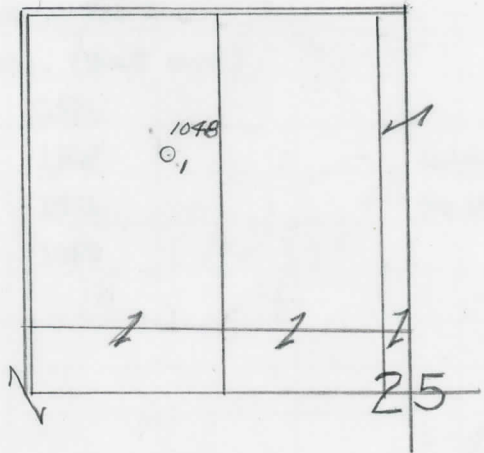
Date October 3, 1945 A.F.E. No. \_\_\_\_\_  
 Division Mich. Producing District \_\_\_\_\_ Lease GILMORE GAS UNIT COMM. Gilmore Gas Unit (Comm.)  
 Acres \_\_\_\_\_ Lease No. \_\_\_\_\_ Elevation \_\_\_\_\_ Well No. 1 (Serial No. 1048)  
 Quadrangle C SE NW NW Sec. 25 Twp. 16 N Rge. 5 W XBOK Dist. Gilmore  
 Survey \_\_\_\_\_ County Isabella State Michigan  
 Operator Sohio Petroleum Company Map Gilmore Township, Isabella County  
990 990 Feet from North Line of Lease

_____	_____	Feet from North Line of Lease
_____	_____	“ “ East “ “ “
_____	_____	“ “ South “ “ “
<u>990</u>	<u>990</u>	“ “ West “ “ “
<u>990</u>	<u>990</u>	Feet from North Line of Section <u>1/4</u>
_____	_____	“ “ East “ “ “
_____	_____	“ “ South “ “ “
<u>990</u>	<u>990</u>	“ “ West “ “ “

### LEGEND

- Location
- ☀ Gas Well
- Oil Well
- ☀ Gas - Distillate Well
- or ○ Dry Hole
- Dry Showing Oil
- ☀ Dry Showing Gas
- ⊗ Abandoned Location
- ☀ or ☀ Abandoned Gas Well
- or ● Abandoned Oil Well
- or ○ Input Well

*Mico*



Scale \_\_\_\_\_

Remarks: \_\_\_\_\_

Submitted by \_\_\_\_\_ Civil Engineer Approved by \_\_\_\_\_ Division Manager  
 Approved by \_\_\_\_\_ Vice-President - General Manager

COMPLETION RECORD OF WELLS DRILLED BY OTHER OPERATORS

Michigan Producing Division

Date October 24, 1945 No. 1048  
 State Mich. Co. Isabella Dist. Gilmore Sec. 25 Twp. 16 N Rge. 5 W  
 Well No. 1 Serial No. 1048 Farm Gilmore Gas Unit Comm. Acres \_\_\_\_\_  
 Operator Sohio Petroleum Co.  
 Date started 10-2-45 Date completed 10-11-45 Elevation 906.4

PRODUCTION RECORD

1st 24 hours natural  
 Date of shot \_\_\_\_\_ No. of quarts \_\_\_\_\_ From \_\_\_\_\_ To \_\_\_\_\_ From \_\_\_\_\_ to \_\_\_\_\_  
 Date of acid \_\_\_\_\_ No. of gallons \_\_\_\_\_  
 1st 24 hours after acid shot \_\_\_\_\_  
 Completed as: Oil Well \_\_\_\_\_ Gas Well \_\_\_\_\_ Dry Hole X

FORMATION AND CASING RECORD

Formation	Top	Bottom	Top Pay	Bottom Pay	Remarks	Casing	
						Size	Set at
Brown Dolomite	1426	Schl. (-520)				10"	355
Mich. Stray	1556	Schl. (Good sand)		(-650)			
cored	1556	1574					
D.S.T.	1524	1548			Open 1 hr. - no results		
D.S.T.	1548	1574			No results		
Total Depth		1880		(-974)			

Remarks 1581' equals 74' SLM

Signed D. C. Shackelford