



Western Michigan University
ScholarWorks at WMU

Legacy Scout Tickets from Pure Oil Company

8-20-2021

MGRRE_PureOilScoutTickets_Cole, Edwin S_5_21073118970000

MGRRE

Western Michigan University

Follow this and additional works at: <https://scholarworks.wmich.edu/pure>



Part of the Geology Commons

WMU ScholarWorks Citation

MGRRE, "MGRRE_PureOilScoutTickets_Cole, Edwin S_5_21073118970000" (2021). *Legacy Scout Tickets from Pure Oil Company*. 3741.

<https://scholarworks.wmich.edu/pure/3741>

This Document is brought to you for free and open access via ScholarWorks at WMU. It has been accepted for inclusion in Legacy Scout Tickets from Pure Oil Company by an authorized administrator of ScholarWorks at WMU. See the National Digital Catalogue - Science Base Catalogue for more collections submitted by MGRRE.



MGRRE_PureOilScoutTickets_Cole, Edwin S_5_21073118970000

API 21073118970000

Permit Number 11897

Lease Name Cole, Edwin S

Well Number 5

County Isabella

Township 16N

Range 06W

Section 32

2021 DEQ or Pure co_name A N R Pipeline Company

Pure Number 1061

Latitude 43.73275

Longitude -85.06519

THE PURE OIL COMPANY LOCATION REPORT

Date October 17, 1945

A.F.E. No. _____

Edwin S. Cole

Division Mich. Producing District _____

Lease Edwin S. Cole

Acres _____ Lease No. _____

Elevation _____

Well No. 5 (Serial No. 1061)

Quadrangle C-N/2-NW-SW
C N¹/₂ NW SW Sec. 32

Twp. 16 N

Rge. 6 W

Twp. Coldwater

Coldwater

Survey _____ County Isabella

State Michigan

Operator Sohio Petroleum Company

Map Coldwater Township, Isabella County

330 Feet from North Line of Lease

“ “ East “ “ “

“ “ South “ “ “

660 660 “ “ West “ “ “

330 330 Feet from North Line of Section

“ “ East “ “ “

“ “ South “ “ “

660 660 “ “ West “ “ “

LEGEND

○ Location

☀ Gas Well

● Oil Well

☀ Gas - Distillate Well

∅ or ○ Dry Hole

● Dry Showing Oil

☀ Dry Showing Gas

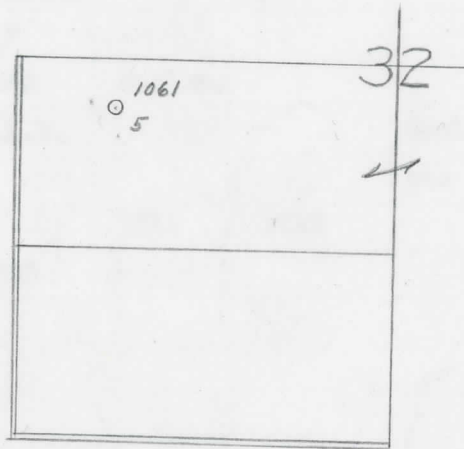
⊗ Abandoned Location

☀ or ⊗ Abandoned Gas Well

● or ● Abandoned Oil Well

● or ○ Input Well

N



Scale _____

Remarks: _____

Submitted by _____

Civil Engineer

Approved by _____

Division Manager

Approved by _____

Vice-President - General Manager

THE PURE OIL COMPANY

The Pure Oil Company

COMPLETION RECORD OF WELLS DRILLED BY OTHER OPERATORS

Michigan Producing Division

Date **January 9, 1946** No. **1061**
 State **Mich.** County **Isabella** ~~INDEX~~ Twp. **Coldwater** Sec. **32** Twp. **16 N** Rge. **6 W**
 Well No. **5** (Serial No.) ~~(County No.)~~ **1061** Farm **Edwin S. Cole** Acres
 Operator **Sohio Petroleum Company** Information secured ~~from~~ **By Scouting Department**
 Date well started **11-21-45** Date well completed **12-28-45** Elevation **977.6**
~~981.6~~

PRODUCTION BOARD

1st 24 hours natural **Estimated potential - 1,320 Bbls.**
 2nd 24 hours natural
 Date of shot No. of quarts From To From to
 Date of acid No. of gallons
 1st 24 hours after acid shot
 2nd 24 hours after acid shot

FORMATION AND CASING RECORD

OIL WELL

Formation	Top	Bottom	Top Pay	Bottom Pay	Remarks	Casing	
						Size	Set at
Brown Dolomite	1280	Schlum.	(-298)			16"	42
Mich. Stray	1381	1395" "	(-413)			6-5/8"	1710
Marshall	(-700)?	1682	Schlum.			5-3/16"	3710
Traverse Lime	3117	S.L.M.	(-2135)		Small show oil and gas 3200-3223.	(-2218)	
Dundee	3709	(-2729)	3711	3720			
Total Depth		3720	(-2738)				

Remarks **3107' equals 3117' S.L.M.**

Signed **D. C. Shackelford**