



Western Michigan University  
ScholarWorks at WMU

---

Legacy Scout Tickets from Pure Oil Company

---

8-20-2021

**MGRRE\_PureOilScoutTickets\_Grewe, Stella et  
al\_1\_21073119300000**

MGRRE

*Western Michigan University*

Follow this and additional works at: <https://scholarworks.wmich.edu/pure>



Part of the Geology Commons

---

#### **WMU ScholarWorks Citation**

MGRRE, "MGRRE\_PureOilScoutTickets\_Grewe, Stella et al\_1\_21073119300000" (2021). *Legacy Scout Tickets from Pure Oil Company*. 3743.

<https://scholarworks.wmich.edu/pure/3743>

This Document is brought to you for free and open access via ScholarWorks at WMU. It has been accepted for inclusion in Legacy Scout Tickets from Pure Oil Company by an authorized administrator of ScholarWorks at WMU. See the National Digital Catalogue - Science Base Catalogue for more collections submitted by MGRRE.



---

**MGRRE\_PureOilScoutTickets\_Grewe, Stella et al\_1\_21073119300000**

API 21073119300000

Permit Number 11930

Lease Name Grewe, Stella et al

Well Number 1

County Isabella

Township 14N

Range 05W

Section 14

2021 DEQ or Pure co\_name Teater, C, W.

Pure Number 1063

Latitude 43.60955

Longitude -84.88169

# THE PURE OIL COMPANY LOCATION REPORT

Date October 24, 1945

A.F.E. No. \_\_\_\_\_

Division Michigan Producing District \_\_\_\_\_

Lease Stella Grewe, et al

Acres \_\_\_\_\_ Lease No. \_\_\_\_\_ Elevation \_\_\_\_\_ Well No. 1 (Serial No. 1063)

Quadrangle SW NE NW Sec. 14 Twp. 14 N Rge. 5 W Twp. Deerfield

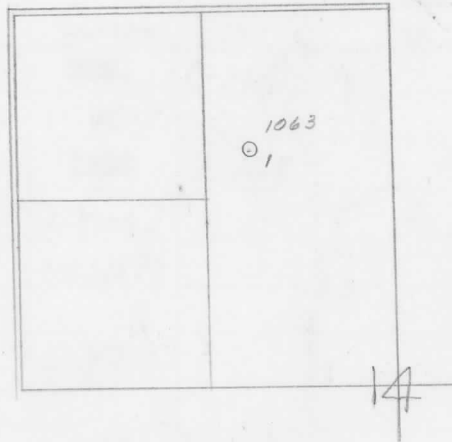
Survey \_\_\_\_\_ County Isabella State Michigan

Operator Chas. W. Teater Map Deerfield Township, Isabella County

<u>990</u>	<u>990</u>	Feet from North Line of Lease
_____	_____	" " East " " "
_____	_____	" " South " " "
<u>330</u>	<u>330</u>	" " West " " "
<u>990</u>	<u>990</u>	Feet from North Line of Section
<u>990</u>	<u>990</u>	" " East " " "
_____	_____	" " South " " "
_____	_____	" " West " " "

### LEGEND

- Location
- ☀ Gas Well
- Oil Well
- ☀ Gas - Distillate Well
- or ○ Dry Hole
- or ● Dry Showing Oil
- ☀ Dry Showing Gas
- ⊗ Abandoned Location
- ☀ or ☀ Abandoned Gas Well
- or ● Abandoned Oil Well
- or ○ Input Well



Scale \_\_\_\_\_

Remarks: \_\_\_\_\_  
\_\_\_\_\_  
\_\_\_\_\_

Submitted by CB Civil Engineer Approved by \_\_\_\_\_ Division Manager

Approved by \_\_\_\_\_ Vice-President - General Manager

The Pure Oil Company  
COMPLETION RECORD OF WELLS DRILLED BY OTHER OPERATORS

Michigan Producing Division

Date January 30, 1946 No. 1063  
 State Mich. County Isabella ~~XXXXXX~~ Twp. Deerfield Sec. 14 Twp. 14 N Rge. 5 W  
 Well No. 1 (Serial No.) 1063 Farm Stella Grewe, et al Acres \_\_\_\_\_  
 Operator Charles W. Teater Information secured ~~from~~ By Scouting Department  
 Date well started 11-8-45 Date well completed 1-23-46 Elevation 839.4

PRODUCTION BOARD

1st 24 hours natural DRY HOLE  
 2nd 24 hours natural \_\_\_\_\_  
 Date of shot \_\_\_\_\_ No. of quarts \_\_\_\_\_ From \_\_\_\_\_ To \_\_\_\_\_ From \_\_\_\_\_ to \_\_\_\_\_  
 Date of acid \_\_\_\_\_ No. of gallons \_\_\_\_\_  
 1st 24 hours after acid shot \_\_\_\_\_  
 2nd 24 hours after acid shot \_\_\_\_\_

FORMATION AND CASING RECORD

Formation	Top	Bottom	Top Pay	Bottom Pay	Remarks	Casing	
						Size	Set at
Brown Dolomite	1220	SLM.	(-381)		H.F.W. 498. (4341)	10"	365
Mich. Stray	1322	(-493)			See remarks below.	8-1/4"	497
Marshall	1408	1620	(-569)			6-5/8"	1326 Out
Sunbury	2545	(-1704)				6-5/8"	1638
Traverse Lime	3067	(-2228)			Scum oil, show gas and salt water 3158. (-2319)	5-3/16"	3677
Dundee	3680	(-2841)			2900 ft. salt water 3711-3716. (-2872)		
Total Depth		3716	(-2877)				

Remarks 1209' equals 1236' SOM; 1277' eq. 1278' SLM; 3035' eq. 3541' SOM; 3638' equals 3645' SLM.  
Michigan Stray: 1 1/2 bailers salt water per hour 1368' to 1375' - increase salt water 1392' to 1400'. (-553)

Signed D. C. Shackelford