



Western Michigan University
ScholarWorks at WMU

Legacy Scout Tickets from Pure Oil Company

8-20-2021

MGRRE_PureOilScoutTickets_Blackmer et al_3_None

MGRRE

Western Michigan University

Follow this and additional works at: <https://scholarworks.wmich.edu/pure>



Part of the Geology Commons

WMU ScholarWorks Citation

MGRRE, "MGRRE_PureOilScoutTickets_Blackmer et al_3_None" (2021). *Legacy Scout Tickets from Pure Oil Company*. 3746.

<https://scholarworks.wmich.edu/pure/3746>

This Document is brought to you for free and open access via ScholarWorks at WMU. It has been accepted for inclusion in Legacy Scout Tickets from Pure Oil Company by an authorized administrator of ScholarWorks at WMU. See the National Digital Catalogue - Science Base Catalogue for more collections submitted by MGRRE.



MGRRE_PureOilScoutTickets_Blackmer et al_3_None

API None

Permit Number GT1352

Lease Name Blackmer et al

Well Number 3

County Isabella

Township 14N

Range 06W

Section 27

2021 DEQ or Pure co_name Taggart Brothers Gas Company

Pure Number 1067

Latitude 43.58169

Longitude -85.011507

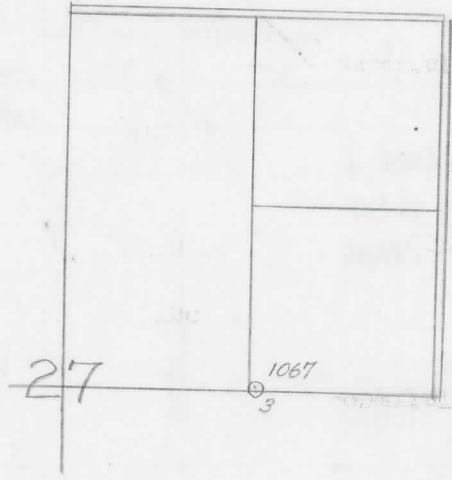
THE PURE OIL COMPANY LOCATION REPORT

Date February 18, 1946 A.F.E. No. _____
 Division Mich. Producing District _____ Lease Blackneere, et al
 Acres _____ Lease No. _____ Elevation _____ Well No. 3 (Serial No. 1067)
 Quadrangle Approx C SL NE Sec. 27 Twp. 14 N Rge. 6 W Twp. Broomfield
 Survey _____ County Isabella State Michigan
 Operator Taggart Bros. Gas Co. Map Broomfield Twp, Isabella County
Taggart Brothers Gas Company

_____	Feet from North Line of Lease
_____	" " East " " "
_____	" " South " " "
_____	" " West " " "
_____	Feet from North Line of Section
_____	" " East " " "
<u>2640</u> <u>2640</u>	" " South " <u>1/4</u>
<u>1320</u> <u>1320</u>	" " West " " "

LEGEND

- Location
- ☀ Gas Well
- Oil Well
- ☀ Gas - Distillate Well
- or ○ Dry Hole
- Dry Showing Oil
- ☀ Dry Showing Gas
- ⊗ Abandoned Location
- ☀ or ☀ Abandoned Gas Well
- or ● Abandoned Oil Well
- or ○ Input Well



Remarks: Core Test. Scale _____

Submitted by _____ Civil Engineer Approved by _____ Division Manager
 Approved by _____ Vice-President - General Manager

Date

February 18, 1946

LOCATION REPORT

A.E. No.

THE LORE OIL COMPANY

COMPLETION RECORD OF WELLS DRILLED BY OTHER OPERATORS

Michigan Producing Division

Date **February 23, 1946** No. **1067**
 State **Mich.** County **Isabella** Dist. **Broomfield** Twp. **27** Sec. **14 N** Rge **6 W**
 (Serial No.)
 Well No. **3** (County No.) **1067** Farm **Blacknere, et al** Acres
 Operator **Taggart Brothers Company** Information secured ~~from~~ **Scouting Department**
 Date well started **12-29-45** Date well completed **1-16-46** Elevation **993.7**

PRODUCTION BOARD

1st 24 hours natural **DRY HOLE**
 2nd 24 hours natural
 Date of shot No. of quarts From To From to
 Date of acid No. of gallons
 1st 24 hours after acid shot
 2nd 24 hours after acid shot

FORMATION AND CASING RECORD

Formation	Top	Bottom	Top Pay	Bottom Pay	Remarks	Casing	
						Size	Set at
Brown Dolomite	1319	S.L.M.				8-1/4"	470
Mich. Stray	1421	"			1 bailer salt water per hr. 1421-1427.	5-3/16"	1409
Total Depth		1427					

Remarks **Core Test. 1344' equals 1334' S.L.M.**

Signed **D. C. Shackelford**