



Western Michigan University
ScholarWorks at WMU

Legacy Scout Tickets from Pure Oil Company

8-20-2021

MGRRE_PureOilScoutTickets_State_1_21073120780000

MGRRE

Western Michigan University

Follow this and additional works at: <https://scholarworks.wmich.edu/pure>



Part of the Geology Commons

WMU ScholarWorks Citation

MGRRE, "MGRRE_PureOilScoutTickets_State_1_21073120780000" (2021). *Legacy Scout Tickets from Pure Oil Company*. 3750.

<https://scholarworks.wmich.edu/pure/3750>

This Document is brought to you for free and open access via ScholarWorks at WMU. It has been accepted for inclusion in Legacy Scout Tickets from Pure Oil Company by an authorized administrator of ScholarWorks at WMU. See the National Digital Catalogue - Science Base Catalogue for more collections submitted by MGRRE.



MGRRE_PureOilScoutTickets_State_1_21073120780000

API 21073120780000

Permit Number 12078

Lease Name State

Well Number 1

County Isabella

Township 16N

Range 06W

Section 32

2021 DEQ or Pure co_name A N R Pipeline Company

Pure Number 1072

Latitude 43.72916

Longitude -85.05524

THE PURE OIL COMPANY

LOCATION REPORT

Date January 16, 1946 A.F.E. No. _____
 Division Mich. Producing District _____ Lease _____
 Acres _____ Lease No. _____ Elevation _____ Well No. 1 (Serial No. 1072 *)
 Quadrangle C-N₂-SW-SE Sec. 32 Twp. 16 N Rge. 6 W ~~XBRK~~ ~~Dist~~ Coldwater
 Survey _____ County Isabella State Michigan

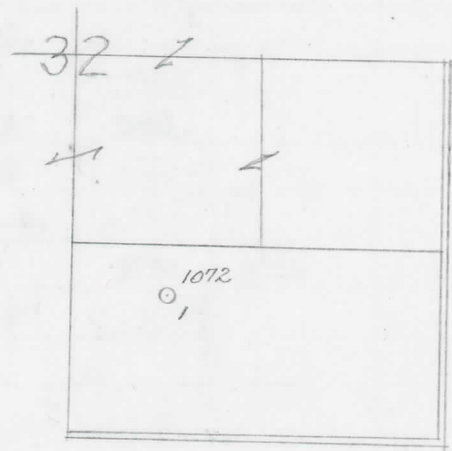
Operator Cities Service Oil Co. Map Coldwater Township, Isabella County
330 330

Feet from North Line of Lease
 " " East " " "
 " " South " " "
660 660 " " West " " "
 Feet from North Line of Section
 " " East " " "
990 990 " " South " " 1/4
660 660 " " West " " "

LEGEND

- Location
- ☀ Gas Well
- Oil Well
- ☀ Gas - Distillate Well
- ∅ or ○ Dry Hole
- Dry Showing Oil
- ☀ Dry Showing Gas
- ⊗ Abandoned Location
- ☀ or ⊗ Abandoned Gas Well
- or ● Abandoned Oil Well
- or ○ Input Well

Handwritten notes:
 840
 1-12-46
 480
 10" coil



Scale _____

Remarks: _____

Submitted by CS Civil Engineer Approved by _____ Division Manager
 Approved by _____ Vice-President - General Manager

COMPLETION RECORD OF WELLS DRILLED BY OTHER OPERATORS

Michigan Producing Division

Date March 27, 1946 No. 1072*
 State Michigan Co. Isabella ~~Dist.~~ Twp. Coldwater Sec. 32 Twp. 16 N Rge. 6 W
 Well No. 1 Serial No. 1072 Farm State Acres _____
 Operator Cities Service Oil Company
 Date started 1-12-46 Date completed 3-8-46 Elevation 985.0
995.0

PRODUCTION RECORD

1st 24 hours natural Flowed 50 Barrels
 Date of shot 3-12-46; 3-15-46; No. of quarts _____ From _____ To _____ From _____ to _____
 Date of acid 3-22-46 No. of gallons 1500
21 ~~24~~ hours after acid Flowed 134 Barrels
 Completed as: Oil Well Gas Well _____ Dry Hole _____

FORMATION AND CASING RECORD

Formation	Top	Bottom	Top Pay	Bottom Pay	Remarks	Casing	
						Size	Set at
Brown Dolomite	1312	Schl.	(-317)			10"	480
Mich. Stray	1415	"	(-420)			6-5/8"	1737
Marshall	(-121)	1716	Schl.			5-3/16"	3748
Antrim	2570	3135	(-1575)				
Traverse Lime	3165	S.L.M.	(-2170)				
Dundee (-2762)	3757	"	3758	3762	(-2763)		
Total Depth		3762	(-2767)				

Remarks 2895' equals 2893' S.L.M.; 3650' equals 3654' S.L.M.; 3745' equals 3745' S.L.M.

Signed D. C. Shackelford