



Western Michigan University
ScholarWorks at WMU

Legacy Scout Tickets from Pure Oil Company

8-20-2021

MGRRE_PureOilScoutTickets_Moll, Bertha M_2_21073121190000

MGRRE

Western Michigan University

Follow this and additional works at: <https://scholarworks.wmich.edu/pure>



Part of the Geology Commons

WMU ScholarWorks Citation

MGRRE, "MGRRE_PureOilScoutTickets_Moll, Bertha M_2_21073121190000" (2021). *Legacy Scout Tickets from Pure Oil Company*. 3753.

<https://scholarworks.wmich.edu/pure/3753>

This Document is brought to you for free and open access via ScholarWorks at WMU. It has been accepted for inclusion in Legacy Scout Tickets from Pure Oil Company by an authorized administrator of ScholarWorks at WMU. See the National Digital Catalogue - Science Base Catalogue for more collections submitted by MGRRE.



MGRRE_PureOilScoutTickets_Moll, Bertha M_2_21073121190000

API 21073121190000

Permit Number 12119

Lease Name Moll, Bertha M

Well Number 2

County Isabella

Township 16N

Range 03W

Section 28

2021 DEQ or Pure co_name Summit Petroleum Corporation

Pure Number 1075

Latitude 43.7450819

Longitude -84.681121

THE PURE OIL COMPANY LOCATION REPORT

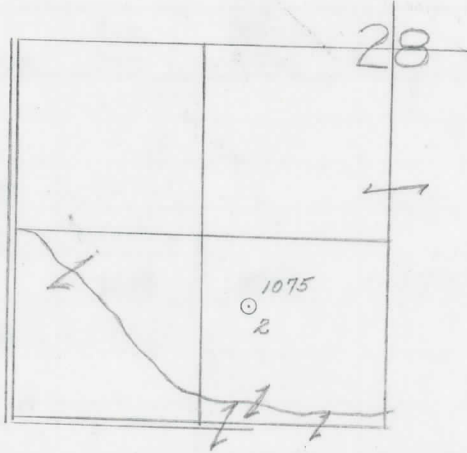
Date February 13, 1946 A.F.E. No. Bertha M. Moll
 Division Mich. Producing District _____ Lease Bertha M. Moll
 Acres _____ Lease No. _____ Elevation _____ Well No. 2 (Serial No. 1075)
 Quadrangle NW-SE-SW Sec. 28 Twp. 16 N Rge. 3 W ~~XBik~~ ~~XBia~~ Twp. Wise
 Survey _____ County Isabella State Michigan
 Operator Cities Service Oil Co. Map Wise Township, Isabella County
430 430

		Feet from North Line of Lease
		" " East " " "
		" " South " " "
<u>330</u>	<u>330</u>	" " West " " "
		Feet from North Line of Section
<u>990</u>	<u>990</u>	" " East " <u>1/4</u> "
<u>890</u>	<u>890</u>	" " South " " "
		" " West " " "

LEGEND

- Location
- ☀ Gas Well
- Oil Well
- ☀ Gas - Distillate Well
- ∅ or ○ Dry Hole
- Dry Showing Oil
- ☀ Dry Showing Gas
- ⊗ Abandoned Location
- ☀ or ☀ Abandoned Gas Well
- or ● Abandoned Oil Well
- or ○ Input Well

Low



Scale _____

Remarks: _____

Submitted by CB Civil Engineer Approved by _____ Division Manager
 Approved by _____ Vice-President - General Manager

THE ROCK OIL COMPANY

COMPLETION RECORD OF WELLS DRILLED BY OTHER OPERATORS

Michigan Producing Division

Date May 22, 1946 No. 1075

State Mich. Co. Isabella District C-W-SE-SW
Twp. Wise Sec. 28 Twp. 16 N Rge. 3 W

Well No. 2 Serial No. 1075 Farm Bertha M. Moll Acres

Operator Cities Service Oil Company

Date started 3-27-46 Date completed 5-11-46 Elevation 763.5

PRODUCTION RECORD

1st 24 hours natural Flowed 83 Bbls.

Date of shot No. of quarts From To From To

Date of acid 5-14-46 No. of gallons 2000

1st 24 hours after acid Flowed 213 Barrels

Completed as: Oil Well Gas Well Dry Hole

FORMATION AND CASING RECORD

Formation	Top	Bottom	Top Pay	Bottom Pay	Remarks	Casing	
						Size	Set at
Brown Dolomite	1122	SLM	(-358)			10"	370
Mich. Stray	1261	"	(-497)			8-1/4"	755
Marshall	1319	1497	(-555)			6-5/8"	1525
Traverse Lime	3006	SLM	(-2243)			5-3/16"	3664
Dundee (-2887)	3651	"	3695	3702	(-2931)		
Total Depth		3702	(-2938)				

Remarks 1230' eq. 1230' SLM; 3645' eq. 3649' SLM.

Signed D. C. Shackelford