



Western Michigan University
ScholarWorks at WMU

Legacy Scout Tickets from Pure Oil Company

8-20-2021

MGRRE_PureOilScoutTickets_Prout, Asa_2_21073121240000

MGRRE

Western Michigan University

Follow this and additional works at: <https://scholarworks.wmich.edu/pure>



Part of the Geology Commons

WMU ScholarWorks Citation

MGRRE, "MGRRE_PureOilScoutTickets_Prout, Asa_2_21073121240000" (2021). *Legacy Scout Tickets from Pure Oil Company*. 3754.

<https://scholarworks.wmich.edu/pure/3754>

This Document is brought to you for free and open access via ScholarWorks at WMU. It has been accepted for inclusion in Legacy Scout Tickets from Pure Oil Company by an authorized administrator of ScholarWorks at WMU. See the National Digital Catalogue - Science Base Catalogue for more collections submitted by MGRRE.



MGRRE_PureOilScoutTickets_Prout, Asa_2_21073121240000

API 21073121240000

Permit Number 12124

Lease Name Prout, Asa

Well Number 2

County Isabella

Township 15N

Range 04W

Section 12

2021 DEQ or Pure co_name Summit Petroleum Corporation

Pure Number 1077

Latitude 43.704897

Longitude -84.7453748

THE PURE OIL COMPANY LOCATION REPORT

Date February 20, 1946

A.F.E. No. _____

Division Mich. Producing

District _____

Asa Prout
Lease Asa Prout

Acres _____ Lease No. _____ Elevation _____ Well No. 2 (Serial No. 1077)

Quadrangle C N¹/₂ - NW SW Sec. 12 Twp. 15 N Rge. 4 W ~~Dist.~~ Isabella Twp. Isabella

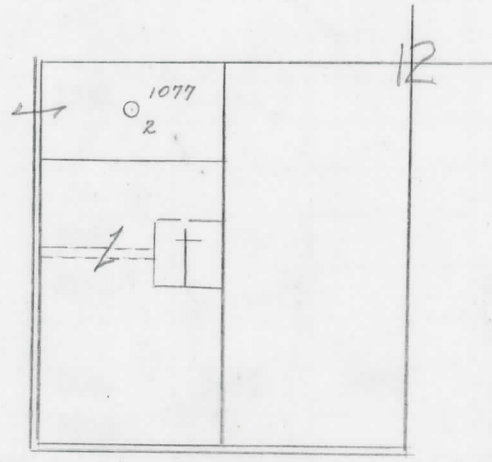
Survey _____ County Isabella State Michigan

Operator Chartiers Oil Co. Map Isabella Township, Isabella County

<u>330</u>	<u>330</u>	Feet from North Line of Lease
<u>660</u>	<u>660</u>	" " East " " "
		" " South " " "
<u>660</u>	<u>660</u>	" " West " " "
<u>330</u>	<u>330</u>	Feet from North Line of Section
		" " East " " "
		" " South " " "
<u>660</u>	<u>660</u>	" " West " " "

LEGEND

- Gas Well
- Oil Well
- Gas - Distillate Well
- Dry Hole
- Dry Showing Oil
- Dry Showing Gas
- Abandoned Location
- Abandoned Gas Well
- Abandoned Oil Well
- Input Well



Remarks: _____

Scale _____

Submitted by CB
Civil Engineer

Approved by _____
Division Manager

Approved by _____
Vice-President - General Manager

THE PURE OIL COMPANY
THE PURE OIL COMPANY

COMPLETION RECORD OF WELLS DRILLED BY OTHER OPERATORS

Michigan Producing

Division

Date May 22, 1946 No. 1077
 State Michigan Co. Isabella ~~DISC~~ Twp. Isabella Sec. 12 Twp. 15 N Rge. 4 W
 Well No. 2 Serial No. 1077 Farm Asa Prout Acres _____
 Operator Chartiers Oil Company
 Date started 3-22-46 Date completed 5-7-46 Elevation 770.5

PRODUCTION RECORD

Filled up 1000 ft.

1st 24 hours natural _____
 Date of shot _____ No. of quarts _____ From _____ To _____ From _____ To _____
 Date of acid 5-15-46 No. of gallons 1500
 1st 24 hours after acid ~~shot~~ Flowed and swabbed 60 Bbls.
 Completed as: Oil Well Gas Well _____ Dry Hole _____

FORMATION AND CASING RECORD

Formation	Top	Bottom	Top Pay	Bottom Pay	Remarks	Casing	
						Size	Set at
Brown Dolomite	1174	(-403)				10"	604
Mich. Stray	1269	(-498)				8-1/4"	957
Marshall	1361	1551	(-590)			6-5/8"	1570
Sunbury	2500	(-1129)				5-3/16"	3662
Berea	2525	(-1754)					
Antrim	2536	3006	(-1765)				
Traverse Lime	3014	SLM.	(-2243)		Show oil & gas 3114-3142.		(-2343)
Dundee	3655	SLM.	3685	3695	(-2914)		
Total Depth		3710	(-2939)				

Remarks 3632' equals 3634' SLM.Signed D. C. Shackelford