



Western Michigan University
ScholarWorks at WMU

Legacy Scout Tickets from Pure Oil Company

8-20-2021

MGRRE_PureOilScoutTickets_Gilmore Gas Unit_3_21073121550000

MGRRE

Western Michigan University

Follow this and additional works at: <https://scholarworks.wmich.edu/pure>



Part of the Geology Commons

WMU ScholarWorks Citation

MGRRE, "MGRRE_PureOilScoutTickets_Gilmore Gas Unit_3_21073121550000" (2021). *Legacy Scout Tickets from Pure Oil Company*. 3756.

<https://scholarworks.wmich.edu/pure/3756>

This Document is brought to you for free and open access via ScholarWorks at WMU. It has been accepted for inclusion in Legacy Scout Tickets from Pure Oil Company by an authorized administrator of ScholarWorks at WMU. See the National Digital Catalogue - Science Base Catalogue for more collections submitted by MGRRE.



MGRRE_PureOilScoutTickets_Gilmore Gas Unit_3_21073121550000

API 21073121550000

Permit Number 12155

Lease Name Gilmore Gas Unit

Well Number 3

County Isabella

Township 16N

Range 05W

Section 33

2021 DEQ or Pure co_name Sohio Petroleum Company

Pure Number 1079

Latitude 43.73757

Longitude -84.91356

THE PURE OIL COMPANY LOCATION REPORT

Date March 6, 1946

A.F.E. No. _____

Division Mich. Producing District _____

Lease Gilmore Gas Unit
3 1079

Acres _____ Lease No. 35 Elevation _____ Well No. 3 (Serial No. 1079)

Quadrangle 10' SW-C-NE Sec. 35 Twp. 16 N Rge. 5 W ~~XBIX~~ Dist. Gilmore Twp. Gilmore

Survey _____ County Isabella State Michigan

Operator Sohio Petroleum Co.
Sohio Petroleum Company Map Gilmore Township, Isabella County

Feet from North Line of Lease

1310 1310 " " East " " "

1310 1310 " " South " " "

1310 1310 " " West " " "

Feet from North Line of Section

1310 1310 " " East " " "

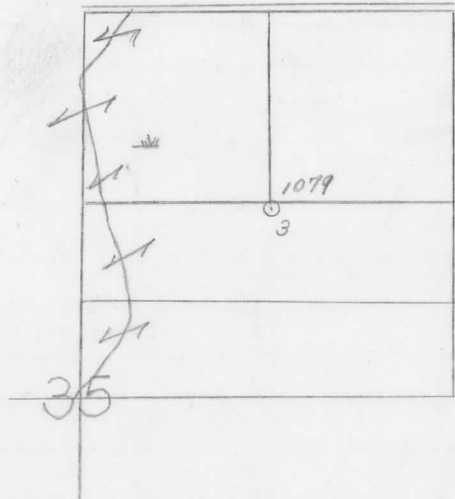
1310 1310 " " South " " 1/4

1310 1310 " " West " " "

LEGEND

- Location
- ☀ Gas Well
- Oil Well
- ☀ Gas - Distillate Well
- ⊙ or ○ Dry Hole
- Dry Showing Oil
- ☀ Dry Showing Gas
- ⊙ Abandoned Location
- ☀ or ⊙ Abandoned Gas Well
- or ● Abandoned Oil Well
- ⊙ or ⊙ Input Well

Loc.



Scale _____

Remarks: _____

Submitted by CB
Civil Engineer

Approved by _____
Division Manager

Approved by _____
Vice-President - General Manager

