



Western Michigan University  
ScholarWorks at WMU

---

Legacy Scout Tickets from Pure Oil Company

---

8-20-2021

**MGRRE\_PureOilScoutTickets\_Lattimore, W  
W\_1\_21073123350000**

MGRRE  
*Western Michigan University*

Follow this and additional works at: <https://scholarworks.wmich.edu/pure>



Part of the Geology Commons

---

#### **WMU ScholarWorks Citation**

MGRRE, "MGRRE\_PureOilScoutTickets\_Lattimore, W W\_1\_21073123350000" (2021). *Legacy Scout Tickets from Pure Oil Company*. 3770.  
<https://scholarworks.wmich.edu/pure/3770>

This Document is brought to you for free and open access via ScholarWorks at WMU. It has been accepted for inclusion in Legacy Scout Tickets from Pure Oil Company by an authorized administrator of ScholarWorks at WMU. See the National Digital Catalogue - Science Base Catalogue for more collections submitted by MGRRE.



---

**MGRRE\_PureOilScoutTickets\_Lattimore, W W\_1\_21073123350000**

API 21073123350000

Permit Number 12335

Lease Name Lattimore, W W

Well Number 1

County Isabella

Township 15N

Range 03W

Section 3

2021 DEQ or Pure co\_name Oxy USA, Incorporated

Pure Number 1097

Latitude 43.72518

Longitude -84.65119

**THE PURE OIL COMPANY**

**LOCATION REPORT**

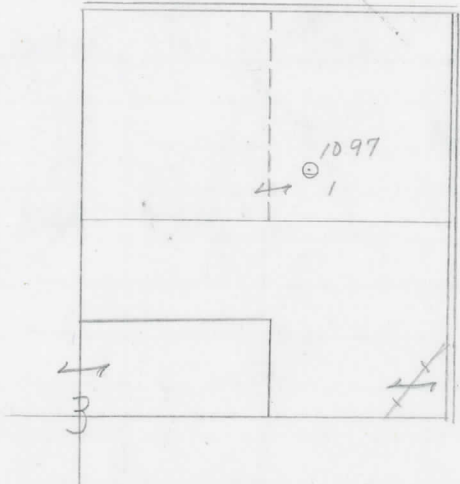
Date May 29, 1946 A.F.E. No. \_\_\_\_\_  
 Division Mich. Producing District \_\_\_\_\_ Lease W. W. Lattimore  
 Acres \_\_\_\_\_ Lease No. \_\_\_\_\_ Elevation \_\_\_\_\_ Well No. 1 (Serial No. 1097)  
 Quadrangle SW-NE-NE Sec. 3 Twp. 15 N Rge. 3 W ~~Den~~ ~~ver~~ Denver  
 Survey \_\_\_\_\_ County Isabella State Michigan  
 Operator Cities Service Oil Co. Map Denver Township, Isabella County

Feet from North Line of Lease	
<u>990</u>	<u>990</u>
" "	East " " "
<u>330</u>	<u>330</u>
" "	South " " "
" "	West " " "
Feet from North Line of Section	
<u>1125</u>	<u>1125</u>
" "	East " " "
<u>990</u>	<u>990</u>
" "	South " " "
" "	West " " "

**LEGEND**

- Location
- ☀ Gas Well
- Oil Well
- ☀ Gas - Distillate Well
- ⊘ or ○ Dry Hole
- Dry Showing Oil
- ☀ Dry Showing Gas
- ⊘ Abandoned Location
- ☀ or ☀ Abandoned Gas Well
- or ● Abandoned Oil Well
- or ○ Input Well

*map*



Remarks: \_\_\_\_\_ Scale \_\_\_\_\_

Submitted by CB Civil Engineer Approved by \_\_\_\_\_ Division Manager  
 Approved by \_\_\_\_\_ Vice-President - General Manager

