



Western Michigan University
ScholarWorks at WMU

Legacy Scout Tickets from Pure Oil Company

8-20-2021

MGRRE_PureOilScoutTickets_Dowd, Samuel T Comm Gas Unit_1_21073123560000

MGRRE

Western Michigan University

Follow this and additional works at: <https://scholarworks.wmich.edu/pure>



Part of the Geology Commons

WMU ScholarWorks Citation

MGRRE, "MGRRE_PureOilScoutTickets_Dowd, Samuel T Comm Gas Unit_1_21073123560000" (2021).

Legacy Scout Tickets from Pure Oil Company. 3771.

<https://scholarworks.wmich.edu/pure/3771>

This Document is brought to you for free and open access via ScholarWorks at WMU. It has been accepted for inclusion in Legacy Scout Tickets from Pure Oil Company by an authorized administrator of ScholarWorks at WMU. See the National Digital Catalogue - Science Base Catalogue for more collections submitted by MGRRE.



**MGRRE_PureOilScoutTickets_Dowd, Samuel T Comm Gas
Unit_1_21073123560000**

API 21073123560000

Permit Number 12356

Lease Name Dowd, Samuel T Comm Gas Unit

Well Number 1

County Isabella

Township 16N

Range 03W

Section 33

2021 DEQ or Pure co_name Summit Petroleum Corporation

Pure Number 1098

Latitude 43.73983

Longitude -84.6835

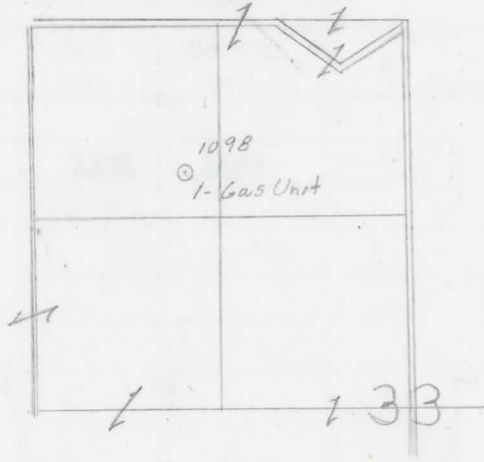
THE PURE OIL COMPANY LOCATION REPORT

Date June 5, 1946 A.F.E. No. _____
 Division Mich. Producing District _____ Lease Samuel T. Dowd Comm. Gas Unit
 Acres _____ Lease No. _____ Elevation _____ Well No. 1 (Serial No. 1098)
 Quadrangle SE-NW-NW Sec. 33 Twp. 16 N Rge. 3 W ~~YORK~~ Wise
 Survey _____ County Isabella State Michigan
 Operator Cities Service Oil Co. Map Wise Township, Isabella County
1040 1040 Feet from North Line of Lease

_____ " " East " " "
 _____ " " South " " "
1040 1040 " " West " " "
1040 1040 Feet from North Line of Section 1/4
 _____ " " East " " "
 _____ " " South " " "
1040 1040 " " West " " "

LEGEND

- Location
- ☀ Gas Well
- Oil Well
- ☀ Gas - Distillate Well
- or ○ Dry Hole
- Dry Showing Oil
- ☀ Dry Showing Gas
- ⊗ Abandoned Location
- ☀ or ☀ Abandoned Gas Well
- or ● Abandoned Oil Well
- or ○ Input Well



Scale _____

Remarks: _____

Submitted by CB Civil Engineer Approved by _____ Division Manager
 Approved by _____ Vice-President - General Manager

