



Legacy Scout Tickets from Pure Oil Company

8-20-2021

MGRRE_PureOilScoutTickets_Brown, Blanche E._1_21073123820000

MGRRE

Western Michigan University

Follow this and additional works at: <https://scholarworks.wmich.edu/pure>



Part of the Geology Commons

WMU ScholarWorks Citation

MGRRE, "MGRRE_PureOilScoutTickets_Brown, Blanche E._1_21073123820000" (2021). *Legacy Scout Tickets from Pure Oil Company*. 3774.

<https://scholarworks.wmich.edu/pure/3774>

This Document is brought to you for free and open access via ScholarWorks at WMU. It has been accepted for inclusion in Legacy Scout Tickets from Pure Oil Company by an authorized administrator of ScholarWorks at WMU. See the National Digital Catalogue - Science Base Catalogue for more collections submitted by MGRRE.



MGRRE_PureOilScoutTickets_Brown, Blanche E._1_21073123820000

API 21073123820000

Permit Number 12382

Lease Name Brown, Blanche E.

Well Number 1

County Isabella

Township 14N

Range 05W

Section 19

2021 DEQ or Pure co_name Wicklund, J. V. Development Company

Pure Number 1102

Latitude 43.59006

Longitude -84.96327

THE PURE OIL COMPANY

Date June 19, 1946 LOCATION REPORT A.F.E. No. Blanche E. Brown

Division Mich. Producing District _____ Lease Blanche E. Brown

Acres _____ Lease No. _____ Elevation _____ Well No. 1 (Serial No. 1102)

Quadrangle SE SW NW Sec. 19 Twp. 14 N Rge. 5 W Twp. Deerfield

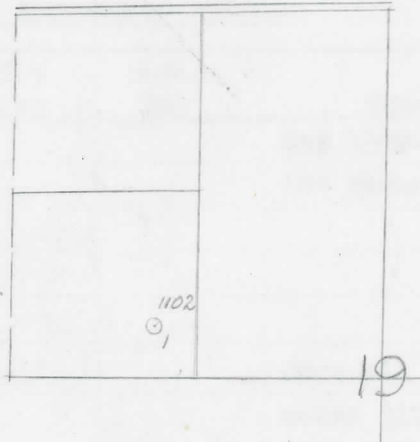
Survey _____ County Isabella State Michigan

Operator J. V. Wicklund Development Co. Map Deerfield Township, Isabella County

		Feet from North Line of Lease	
<u>330</u>	<u>330</u>	" " East " " "	
<u>330</u>	<u>330</u>	" " South " " "	
		" " West " " "	
		Feet from North Line of Section	
		" " East " " "	
<u>330</u>	<u>330</u>	" " South " " <u>1/4</u>	
<u>990</u>	<u>990</u>	" " West " " "	

LEGEND

- Location
- ☀ Gas Well
- Oil Well
- ☀ Gas - Distillate Well
- or ○ Dry Hole
- or ● Dry Showing Oil
- ☀ Dry Showing Gas
- ⊗ Abandoned Location
- ☀ or ☀ Abandoned Gas Well
- or ● Abandoned Oil Well
- or ○ Input Well



Remarks: _____

Scale _____

Submitted by CB Civil Engineer Approved by _____ Division Manager

Approved by _____ Vice-President - General Manager

19, 1946 COMPLETION RECORD OF WELLS DRILLED BY OTHER OPERATORS

Michigan Producing DIVISION

Date December 31, 1946 No. 1102

State Mich. Co. Isabella ~~DIST.~~ Twp. Deerfield Sec. 19 Twp. 14 N Rge. 5 W

Well No. 1 Serial No. 1102 Farm Blanche E. Brown Acres

Operator J. V. Wicklund Development Company

Date started 6-13-46 Date completed 11-6-46 Elevation 915.6

Second Hole: 8-5-46

PRODUCTION RECORD

1st 24 hours natural

Date of shot No. of quarts From To From To

Date of acid No. of gallons shot

1st 24 hours after acid

Completed as: Oil Well Gas Well Dry Hole X

FORMATION AND CASING RECORD

Formation	Top	Bottom	Top Pay	Bottom Pay	Remarks	Casing	
						Size	Set at
Mich. Stray	1309	(-393)			Gas 1309-1313. (-393)	10"	584
Marshall		1581	(-665)		See remarks below.	6-5/8"	1598
Antrim	2518	C.T.M.	(-1602)				
Traverse Form.	3051	S.O.M.	(-2135)				
Traverse Lime	3051	S.O.M.	(-2135)		(-2213)		
Trav.-Alpena	3109	"	(-2193)		Show oil 3129; salt water 3129. (-2213)	(-2702)	
Dundee	3618	C.T.M.	(-2702)	(-2709)	Small show oil, gas, 3618-3623; increase 3625-3627; show salt water 3760-3765 - 3 ba. per hour from 3780-3790. (-2864)		
Total Depth		3800	(-2884)				
Plugged back:		1622	(-706)	(-698)			

Remarks Very small show oil and gas 1614 to 1619 - est. 250,000 cu. ft. gas - after well was plugged back to 1622 found only 20,000 cu. ft. gas.

1800' CTM eq. 1799' SLM; 3084' CTM equals 3091' SOM.

Signed Harry J. Gaspeny