



Western Michigan University  
ScholarWorks at WMU

---

Legacy Scout Tickets from Pure Oil Company

---

8-20-2021

**MGRRE\_PureOilScoutTickets\_Meyers, I. R.\_1\_21073126340000**

MGRRE

*Western Michigan University*

Follow this and additional works at: <https://scholarworks.wmich.edu/pure>



Part of the Geology Commons

---

#### **WMU ScholarWorks Citation**

MGRRE, "MGRRE\_PureOilScoutTickets\_Meyers, I. R.\_1\_21073126340000" (2021). *Legacy Scout Tickets from Pure Oil Company*. 3786.

<https://scholarworks.wmich.edu/pure/3786>

This Document is brought to you for free and open access via ScholarWorks at WMU. It has been accepted for inclusion in Legacy Scout Tickets from Pure Oil Company by an authorized administrator of ScholarWorks at WMU. See the National Digital Catalogue - Science Base Catalogue for more collections submitted by MGRRE.



---

**MGRRE\_PureOilScoutTickets\_Meyers, I. R.\_1\_21073126340000**

API 21073126340000

Permit Number 12634

Lease Name Meyers, I. R.

Well Number 1

County Isabella

Township 13N

Range 04W

Section 36

2021 DEQ or Pure co\_name Bell, H E and Atha, Hunter

Pure Number 1114

Latitude 43.47614

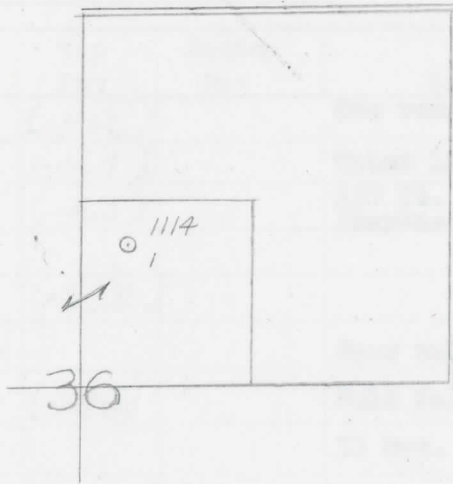
Longitude -84.73569

**THE PURE OIL COMPANY**  
**LOCATION REPORT**

Date Sept. 25, 1946 A.F.E. No. \_\_\_\_\_  
 Division Mich. Producing District \_\_\_\_\_ Lease I. R. Meyers  
 Acres \_\_\_\_\_ Lease No. \_\_\_\_\_ Elevation \_\_\_\_\_ Well No. 1 (Serial No. 1114)  
 Quadrangle NW-SW-NE Sec. 36 Twp. 13 N Rge. 4 W ~~XEDM.~~ ~~XDGA.~~ Lincoln  
 Survey \_\_\_\_\_ County Isabella State Michigan  
 Operator H. E. Bell Map Lincoln Township, Isabella County

<u>330</u>	<u>330</u>	Feet from North Line of Lease
<u>990</u>	<u>990</u>	" " East " " "
		" " South " " "
		" " West " " "
		Feet from North Line of Section
<u>990</u>	<u>990</u>	" " East " " "
<u>330</u>	<u>330</u>	" " South " <u>1/4</u> "
		" " West " " "

- LEGEND**
- Location
  - ☀ Gas Well
  - Oil Well
  - ☀ Gas - Distillate Well
  - or ○ Dry Hole
  - Dry Showing Oil
  - ☀ Dry Showing Gas
  - ⊗ Abandoned Location
  - ☀ or ☀ Abandoned Gas Well
  - or ● Abandoned Oil Well
  - or ○ Input Well



Remarks: \_\_\_\_\_  
 \_\_\_\_\_  
 \_\_\_\_\_

Submitted by UB Civil Engineer Approved by \_\_\_\_\_ Division Manager  
 Approved by \_\_\_\_\_ Vice-President - General Manager

Scale \_\_\_\_\_

Date Sept. 22, 1946

LOCATION REPORT

W.E. No.

THE FURE OIL COMPANY

COMPLETION RECORD OF WELLS DRILLED BY OTHER OPERATORS

Michigan Producing DIVISION

Date November 20, 1946

No. 1114

State Mich. Co. Isabella District Lincoln Twp. Lincoln Sec. 36 Twp. 13 N Rge. 4 W

Well No. 1 Serial No. 1114 Farm I. R. Meyers Acres

Operator H. E. Bell

Date started 10-4-46 Date completed 11-14-46 Elevation 787.1

PRODUCTION RECORD

1st 24 hours natural

Date of shot No. of quarts From To From To

Date of acid No. of gallons shot

1st 24 hours after acid

Completed as: Oil Well Gas Well Dry Hole X

FORMATION AND CASING RECORD

Formation	Top	Bottom	Top Pay	Bottom Pay	Remarks	Casing	
						Size	Set at
Brown Dolomite	1143	S.L.M.	(-356)		See remarks below.	10"	430
Mich. Stray	1224	"	(-437)		Water 1226-1236.	8-1/4"	936
Marshall	1247	S.L.M.	1522 (-460)		150 ft. wtr. 1230; Increase 1250.	6-5/8"	1573
Antrim	2528	(-174)					
Traverse Lime	2998	S.O.M.	(-2211)				
Trav. (Alpena)	3058	(-2271)			Show water in Traverse.		
Dundee	3525	S.L.M.	(-2738)		Hole full water in 30 hrs. 3531-3532.		
Total Depth		3577	(-2790)				

Remarks Show water 445 - hole full water 485-495.

860' CTM eq. 840' SOM; 1131' CTM eq. 1133' SLM; 2548' CTM eq. 2552' SOM; 3525' CTM eq. 3519' SOM; 3585' eq. 3571' SLM.

Signed Harry J. Gaspeny