



Legacy Scout Tickets from Pure Oil Company

8-20-2021

**MGRRE_PureOilScoutTickets_Prout, James
T_1_21073126940000**

MGRRE
Western Michigan University

Follow this and additional works at: <https://scholarworks.wmich.edu/pure>



Part of the Geology Commons

WMU ScholarWorks Citation

MGRRE, "MGRRE_PureOilScoutTickets_Prout, James T_1_21073126940000" (2021). *Legacy Scout Tickets from Pure Oil Company*. 3793.
<https://scholarworks.wmich.edu/pure/3793>

This Document is brought to you for free and open access via ScholarWorks at WMU. It has been accepted for inclusion in Legacy Scout Tickets from Pure Oil Company by an authorized administrator of ScholarWorks at WMU. See the National Digital Catalogue - Science Base Catalogue for more collections submitted by MGRRE.



MGRRE_PureOilScoutTickets_Prout, James T_1_21073126940000

API 21073126940000

Permit Number 12694

Lease Name Prout, James T

Well Number 1

County Isabella

Township 15N

Range 04W

Section 12

2021 DEQ or Pure co_name Prout, James T.

Pure Number 1121

Latitude 43.7069244

Longitude -84.7367065

THE PURE OIL COMPANY

LOCATION REPORT

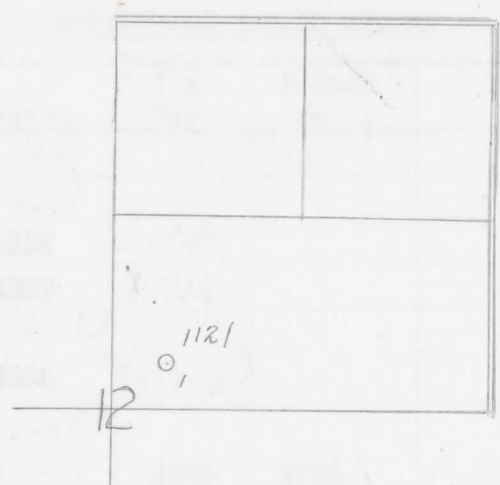
Date October 16, 1946 A.F.E. No. James T. Prout
 Division Mich. Producing District _____ Lease James T. Prout
 Acres _____ Lease No. _____ Elevation _____ Well No. 1 (Serial No. 1121)
 Quadrangle SW-SW-NE Sec. 12 Twp. 15 N Rge. 4 W YBKC Dist. Isabella
 Survey _____ County Isabella State Michigan
 Operator A. J. Slagter, Jr. Map Isabella Township, Isabella County

Feet from North Line of Lease	
" " East " " "	
<u>330</u> <u>330</u>	" " South " " "
<u>330</u> <u>330</u>	" " West " " "
Feet from North Line of Section	
" " East " " "	
<u>330</u> <u>330</u>	" " South " <u>1/4</u> "
<u>330</u> <u>330</u>	" " West " " "

LEGEND

- Location
- ☀ Gas Well
- Oil Well
- ☀ Gas - Distillate Well
- or ○ Dry Hole
- Dry Showing Oil
- ☀ Dry Showing Gas
- ⊗ Abandoned Location
- ☀ or ☀ Abandoned Gas Well
- or ● Abandoned Oil Well
- or ○ Input Well

Low



Remarks: _____

Submitted by CB Civil Engineer

Approved by _____ Division Manager

Approved by _____ Vice-President - General Manager

Scale _____

Date October 19 1946

LOCATION REPORT

70111122
A.E. NO.

THE PURE OIL COMPANY

COMPLETION RECORD OF WELLS DRILLED BY OTHER OPERATORS

Michigan Producing DIVISION

Date December 31, 1946 No. 1121
 State Mich. Co. Isabella Dist. Isabella Sec. 12 Twp. 15 N Rge. 4 W
 Well No. 1 Serial No. 1121 Farm James T. Prout Acres _____
 Operator A. J. Slagter, Jr.
 Date started 10-14-46 Date completed 12-8-46 Elevation 774.1

PRODUCTION RECORD

12
 1st ~~24~~ hours natural Filled up 2000 ft.
 Date of shot _____ No. of quarts _____ From _____ To _____
 Date of acid 12-22-46 No. of gallons 1000
 1st 24 hours after acid Flowed 55 Bbls.
 Completed as: Oil Well Gas Well _____ Dry Hole _____

FORMATION AND CASING RECORD

Formation	Top	Bottom	Top Pay	Bottom Pay	Remarks	Casing	
						Size	Set at
Brown Dolomite	1228	(-454)				10"	102
Mich. Stray	1305	(-531)				6-5/8"	1698
Marshall	1358	1548	(-1548)			5-3/16"	3688
Coldw. Red Rock	2500	2503	(-1726)				
Sunbury	2507	(-1733)					
Antrim	2527	3024	(-1753)				
Traverse Lime	3024	(-2250)					
Trav.-Alpena	3098	(-2324)	3696	3706	(-2922)		
Dundee	3663	(-2889)					
Total Depth		3707	(-2933)				

Remarks 3685' CTM equals 3686' CDM.; 3709' CTM equals 3707' SLM.

Signed Harry J. Gaspeny