



Western Michigan University
ScholarWorks at WMU

Legacy Scout Tickets from Pure Oil Company

8-20-2021

MGRRE_PureOilScoutTickets_Coldwater Gas Unit_14_21073127890000

MGRRE

Western Michigan University

Follow this and additional works at: <https://scholarworks.wmich.edu/pure>



Part of the Geology Commons

WMU ScholarWorks Citation

MGRRE, "MGRRE_PureOilScoutTickets_Coldwater Gas Unit_14_21073127890000" (2021). *Legacy Scout Tickets from Pure Oil Company*. 3801.

<https://scholarworks.wmich.edu/pure/3801>

This Document is brought to you for free and open access via ScholarWorks at WMU. It has been accepted for inclusion in Legacy Scout Tickets from Pure Oil Company by an authorized administrator of ScholarWorks at WMU. See the National Digital Catalogue - Science Base Catalogue for more collections submitted by MGRRE.



MGRRE_PureOilScoutTickets_Coldwater Gas Unit_14_21073127890000

API 21073127890000

Permit Number 12789

Lease Name Coldwater Gas Unit

Well Number 14

County Isabella

Township 16N

Range 06W

Section 32

2021 DEQ or Pure co_name Mid Michigan Gas Storage Company

Pure Number 1130

Latitude 43.7299852

Longitude -85.0625418

THE PURE OIL COMPANY

LOCATION REPORT

Date November 20, 1946

A.F.E. No. _____

Division Mich. Producing District _____

Lease Coldwater Gas Unit (Comm.)
Coldwater Gas Unit (Comm.)

Acres _____ Lease No. _____

Elevation _____ Well No. 14 (Serial No. 1130)

Quadrangle 50' S - C - SW Sec. 32

Twp. 16 N Rge. 6 W

XBLK DISEX Twp. Coldwater

Survey _____ County Isabella

State Michigan

Operator Sohio Petroleum Company

Map Coldwater Township, Isabella County

Feet from North Line of Lease

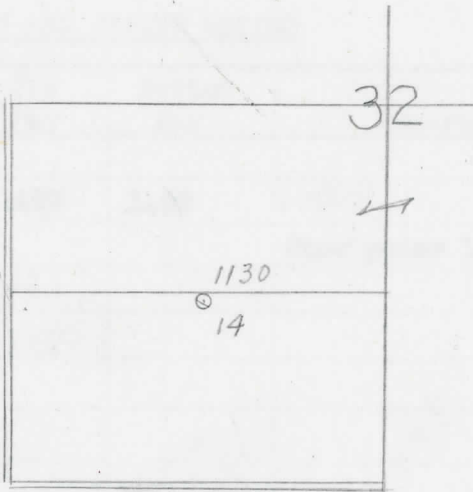
1270	1270	"	"	East	"	"	"
1320	1320	"	"	South	"	"	"
		"	"	West	"	"	"

Feet from North Line of Section

1270	1270	"	"	East	"	"	"
1320	1320	"	"	South	"	<u>1/4</u>	"
		"	"	West	"	"	"

LEGEND

- ☉ Location
- ☀ Gas Well
- Oil Well
- ☀ Gas - Distillate Well
- ⊙ or ○ Dry Hole
- Dry Showing Oil
- ☀ Dry Showing Gas
- ⊙ Abandoned Location
- ☀ or ☀ Abandoned Gas Well
- or ● Abandoned Oil Well
- ⊙ or ⊙ Input Well



Remarks: _____ Scale _____

Submitted by CB

Civil Engineer

Approved by _____

Division Manager

Approved by _____

Vice-President - General Manager

