



Western Michigan University
ScholarWorks at WMU

Legacy Scout Tickets from Pure Oil Company

8-20-2021

MGRRE_PureOilScoutTickets_Cheadle, E. B._1_21073128270000

MGRRE

Western Michigan University

Follow this and additional works at: <https://scholarworks.wmich.edu/pure>



Part of the Geology Commons

WMU ScholarWorks Citation

MGRRE, "MGRRE_PureOilScoutTickets_Cheadle, E. B._1_21073128270000" (2021). *Legacy Scout Tickets from Pure Oil Company*. 3807.

<https://scholarworks.wmich.edu/pure/3807>

This Document is brought to you for free and open access via ScholarWorks at WMU. It has been accepted for inclusion in Legacy Scout Tickets from Pure Oil Company by an authorized administrator of ScholarWorks at WMU. See the National Digital Catalogue - Science Base Catalogue for more collections submitted by MGRRE.



MGRRE_PureOilScoutTickets_Cheadle, E. B._1_21073128270000

API 21073128270000

Permit Number 12827

Lease Name Cheadle, E. B.

Well Number 1

County Isabella

Township 16N

Range 06W

Section 33

2021 DEQ or Pure co_name Hanners, George G.

Pure Number 1136

Latitude 43.73281

Longitude -85.03038

THE PURE OIL COMPANY

LOCATION REPORT

Date December 4, 1946

A.F.E. No. _____

E. B. Cheadle
E. B. Cheadle

Division Mich. Producing District _____

Lease _____

Acres _____ Lease No. _____ Elevation _____ Well No. 1 (Serial No. 1136)

Quadrangle C N $\frac{1}{2}$ NE SE Sec. 33 Twp. 16 N Rge. 6 W ~~Dist.~~ Goldwater Twp. Coldwater

Survey _____ County Isabella State Michigan

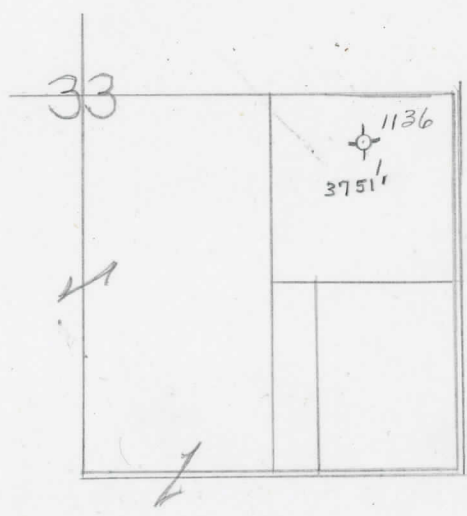
Operator George G. Hanners Map Goldwater Township, Isabella County

<u>330</u>	<u>330</u>	Feet from North Line of Lease
<u>660</u>	<u>660</u>	" " East " " "
		" " South " " "
		" " West " " "
<u>330</u>	<u>330</u>	Feet from North Line of Section
<u>660</u>	<u>660</u>	" " East " " "
		" " South " " "
		" " West " " "

LEGEND

- Location
- ☀ Gas Well
- Oil Well
- ☀ Gas - Distillate Well
- ∅ or ○ Dry Hole
- Dry Showing Oil
- ☀ Dry Showing Gas
- ⊗ Abandoned Location
- ☀ or ☀ Abandoned Gas Well
- or ● Abandoned Oil Well
- or ○ Input Well

Low



Remarks: _____ Scale _____

Submitted by CB Civil Engineer Approved by _____ Division Manager

Approved by _____ Vice-President - General Manager