



Western Michigan University  
ScholarWorks at WMU

---

Legacy Scout Tickets from Pure Oil Company

---

8-20-2021

## MGRRE\_PureOilScoutTickets\_Consumers Power \_1\_unk

MGRRE

*Western Michigan University*

Follow this and additional works at: <https://scholarworks.wmich.edu/pure>



Part of the Geology Commons

---

### WMU ScholarWorks Citation

MGRRE, "MGRRE\_PureOilScoutTickets\_Consumers Power \_1\_unk" (2021). *Legacy Scout Tickets from Pure Oil Company*. 3812.

<https://scholarworks.wmich.edu/pure/3812>

This Document is brought to you for free and open access via ScholarWorks at WMU. It has been accepted for inclusion in Legacy Scout Tickets from Pure Oil Company by an authorized administrator of ScholarWorks at WMU. See the National Digital Catalogue - Science Base Catalogue for more collections submitted by MGRRE.



---

## MGRRE\_PureOilScoutTickets\_Consumers Power \_1\_unk

API unk

Permit Number unk

Lease Name Consumers Power

Well Number 1

County Jackson

Township 02S

Range 01W

Section 34

2021 DEQ or Pure co\_name Consumers Power

Pure Number 3

Latitude 42.2547857

Longitude -84.4137195

## THE PURE OIL COMPANY

DATE June 30th 1928

## LOCATION REPORT

No. 3STATE Michigan COUNTY Jackson DIST. Blackmar TWP. Blackmar SEC. 34 TOWN. 2 S RANGE 1 W  
PREC.WELL No. 1 (SERIAL No. 3) FARM Consumers Power Co. ACRES

NAME OF STREAM OR WATERS QUADRANGLE

OPERATOR Consumers Power Co. MAP 1/2 inch - 1 Mile

Feet from North Line of Farm

" " East " " "

" " South " " "

" " West " " "

1160

Feet from North Line of Section

" " East " " "

" " South " " "

2620

" " West " " "

LEGEND

O LOCATION

① RIG

⊕ DRILLING

☼ GAS WELL

● OIL WELL

⦿ SMALL OIL WELL

⦿ DRY HOLE

⦿ DRY SHOWING OIL

⦿ DRY SHOWING GAS

⦿ ABANDONED LOCATION

⦿ ABANDONED GAS WELL

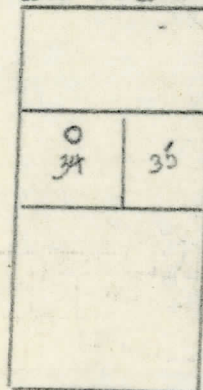
⦿ ABANDONED OIL WELL

NOTE: Below make tracing from map (when no map is obtainable make sketch), showing farm, center of section, this location with measurements and also wells, dry holes, or other locations in the vicinity of this location. Make copy to keep for reference and send original to Columbus office.

Elevation

930

Merchants and Trail Streets



N

REMARKS:

SIGNED

Superintendent or Foreman.

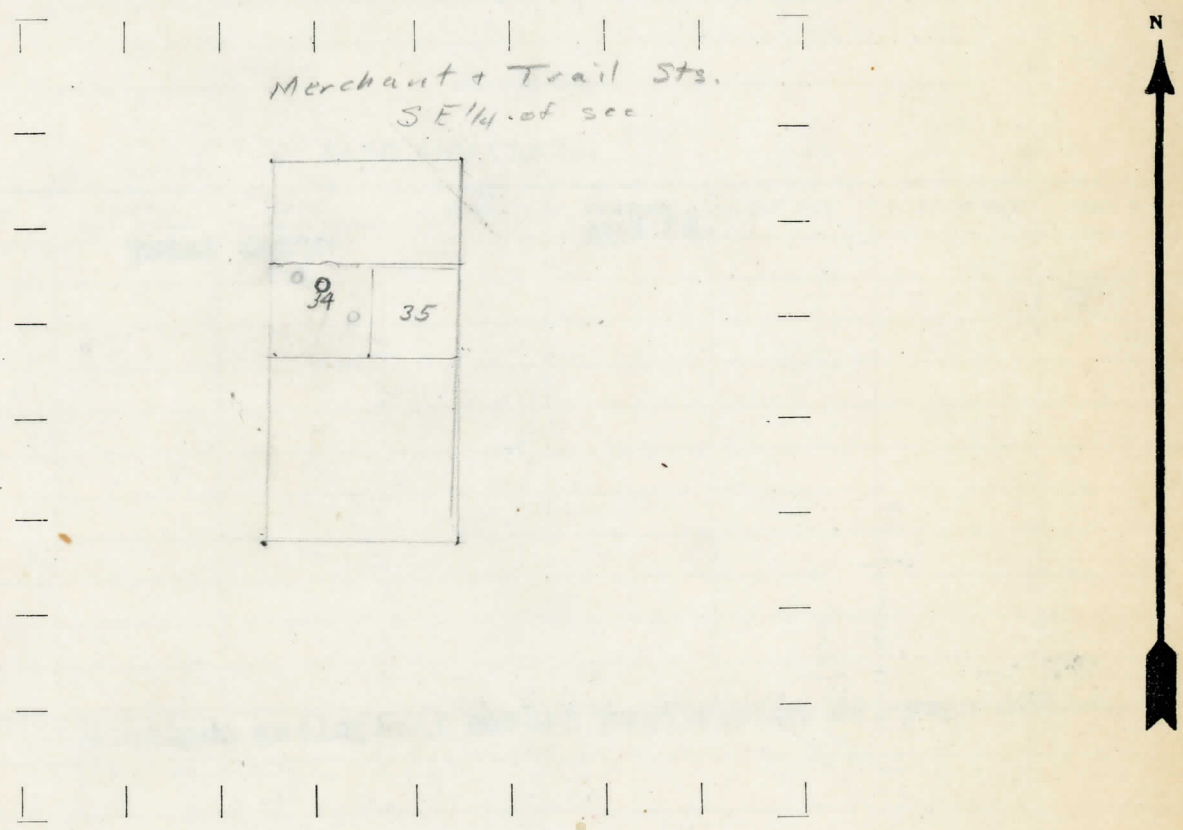
STATE *Mich* COUNTY *Jackson* DIST. *Blackman* SEC. *34* TOWN *25* RANGE *1W*  
WELL No. (SERIAL No. *3*) FARM *Consumers Power* ACRES

NAME OF STREAM OR WATERS QUADRANGLE  
OPERATOR MAP *1/2" = 1 mi*

Feet from North Line of Farm  
" " East " " "  
" " South " " "  
" " West " " "  
*1160* Feet from North Line of Section  
" " East " " "  
" " South " " "  
*2620* " " West " " "

- LEGEND**
- |                  |                      |
|------------------|----------------------|
| ○ LOCATION       | ⊗ DRY HOLE           |
| ⊙ RIG            | ⬤ DRY SHOWING OIL    |
| ⊕ DRILLING       | ⊗ DRY SHOWING GAS    |
| ⊗ GAS WELL       | ⊗ ABANDONED LOCATION |
| ● OIL WELL       | ⊗ ABANDONED GAS WELL |
| ⬤ SMALL OIL WELL | ⊗ ABANDONED OIL WELL |

NOTE: Below make tracing from map (when no map is obtainable make sketch), showing farm, center of section, this location with measurements and also wells, dry holes, or other locations in the vicinity of this location. Make copy to keep for reference and send original to Columbus office.



REMARKS:

SIGNED  
Superintendent or Foreman.

SIGNED \_\_\_\_\_ SUPT. OR FOREMAN \_\_\_\_\_

DESCRIPTION	QUANTITY	MAKE	SIZE	MATERIAL
-------------	----------	------	------	----------

Mich. Geol. Series  
 Pub 24; Page 226

TD. 400