



Western Michigan University
ScholarWorks at WMU

Thin Sections

11-11-2022

MGRRE_ThinSections_MGRRE-29_7

MGRRE

Western Michigan University

Follow this and additional works at: <https://scholarworks.wmich.edu/tsi>



Part of the Geology Commons

Recommended Citation

MGRRE, "MGRRE_ThinSections_MGRRE-29_7" (2022). *Thin Sections*. 3815.
<https://scholarworks.wmich.edu/tsi/3815>

This Image is brought to you for free and open access via ScholarWorks at WMU. It has been accepted for inclusion in Thin Sections by an authorized administrator of ScholarWorks at WMU. See the National Digital Catalogue - Science Base Catalogue for more collections submitted by MGRRE.



MGRRE_ThinSections_MGRRE-29_7

API 21137338750000

Permit Number 33875

Well Name State Chester 18 aka EGSP MI-2

County Otsego

Township 29N

Range 2W

Section 13

Formation Ellsworth @1435, Lachine @1476, Paxton @1572, Norwood @1608, Traverse @1661

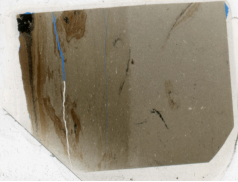
Box MGRRE-29

Slot 7

Depth 1586.4

Latitude 44.9091388

Longitude -84.4997903



M.I - 2, 1586.4