



Western Michigan University
ScholarWorks at WMU

Legacy Scout Tickets from Pure Oil Company

8-20-2021

MGRRE_PureOilScoutTickets_Bourner_1_21077047580000

MGRRE

Western Michigan University

Follow this and additional works at: <https://scholarworks.wmich.edu/pure>



Part of the Geology Commons

WMU ScholarWorks Citation

MGRRE, "MGRRE_PureOilScoutTickets_Bourner_1_21077047580000" (2021). *Legacy Scout Tickets from Pure Oil Company*. 3833.

<https://scholarworks.wmich.edu/pure/3833>

This Document is brought to you for free and open access via ScholarWorks at WMU. It has been accepted for inclusion in Legacy Scout Tickets from Pure Oil Company by an authorized administrator of ScholarWorks at WMU. See the National Digital Catalogue - Science Base Catalogue for more collections submitted by MGRRE.



MGRRE_PureOilScoutTickets_Bourner_1_21077047580000

API 21077047580000

Permit Number 4758

Lease Name Bourner

Well Number 1

County Kalamazoo

Township 02S

Range 12W

Section 3

2021 DEQ or Pure co_name Premler Oil Corporation

Pure Number 4

Latitude 42.31831

Longitude -85.70446

The Pure Oil Company
COMPLETION RECORD OF WELLS DRILLED BY OTHER OPERATORS

DATE January 13, 1938

LOCATION REPORT

No. 4

STATE Michigan

COUNTY Kalamazoo

Kalamazoo

DIST. Oshtemo
TWP. Oshtemo
PREC. Arthur F. Bourner

Oshtemo

SEC. 3

TOWN 2-S

1-S
2-S

RANGE 12 W

12 W

WELL No. 1 (SERIAL No. 4) FARM

Arthur F. Bourner

ACRES

NAME OF STREAM OR WATERS

QUADRANGLE SW SW SW SW

OPERATOR Premier Oil Corporation

Map

Oshtemo Township, Kalamazoo County

Premier Oil Corp.

Oshtemo - Kalamazoo

Feet from North Line of Farm

" " East " " "

29292

" " South " " "

52522

" " West " " "

Feet from North Line of Section

" " East " " "

29292

" " South " " "

52522

" " West " " "

Loc.

LEGEND

○ LOCATION

⊕ RIG

⊕ DRILLING

☀ GAS WELL

● OIL WELL

● SMALL OIL WELL

⊖ DRY HOLE

⊖ DRY SHOWING OIL

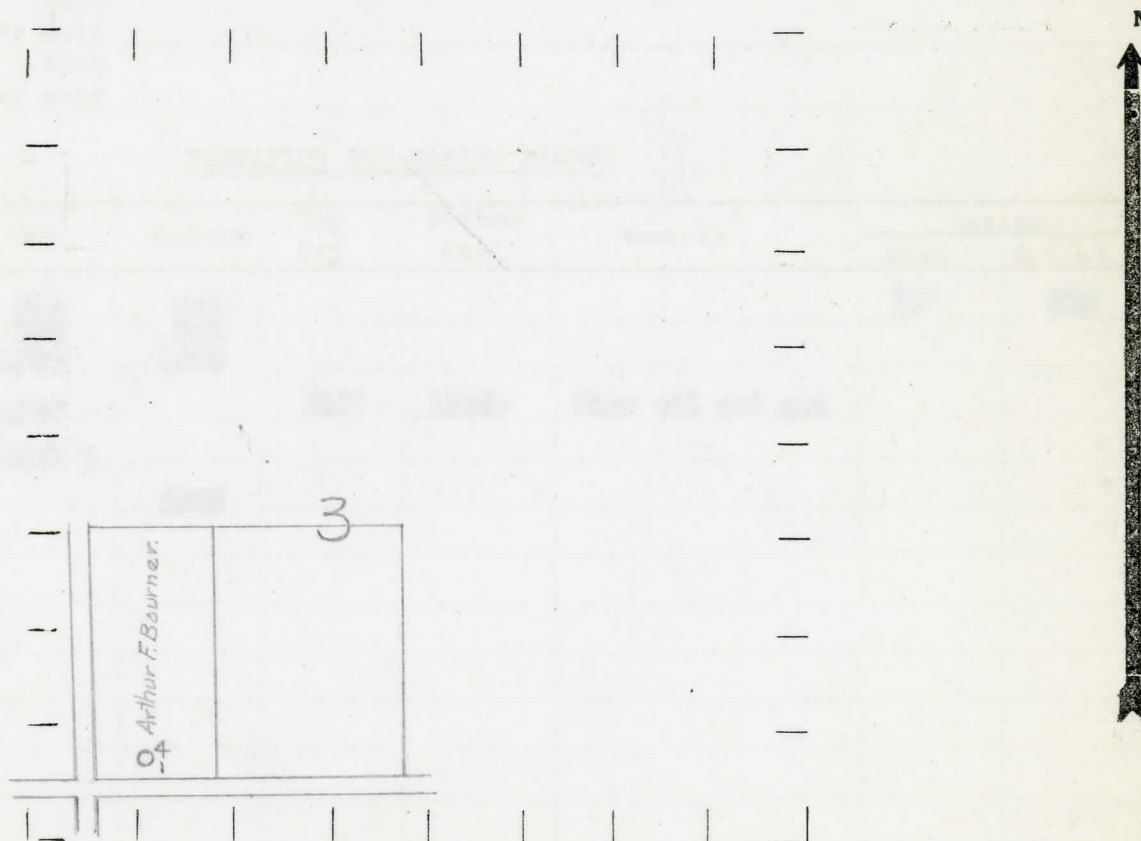
⊖ DRY SHOWING GAS

⊖ ABANDONED LOCATION

☀ ABANDONED GAS WELL

● ABANDONED OIL WELL

NOTE: Below make tracing from map, (when no map is obtainable make sketch) showing farm, center of section, this location with measurements and also wells, dry holes, or other locations in the vicinity of this location.



REMARKS:

SIGNED

R. L. Yeager

Superintendent or Foreman.

Michigan Producing Division

Date April 21, 1938 No. 4
 State Mich. County Kalamazoo Dist. Oashtemo
 (Serial No.) Twp. Oashtemo Sec. 3 Twp. 2 S Rge. 12 W
 Well No. 1 (County No.) 4 Farm Arthur F. Bourner Acres _____
 Operator Premier Oil Corporation Information secured ~~from~~ By Scouting Department
 Date well started 2-1-38 Date well completed 4-12-38 Elevation 1018.5

PRODUCTION RECORD

1st 24 hours natural Dry Hole
 2nd 24 hours natural _____
 Date of shot _____ No. of quarts _____ From _____ to _____ From _____ to _____
 Date of acid _____ No. of gallons _____
 shot _____
 1st 24 hours after acid _____
 shot _____
 2nd 24 hours after acid _____

FORMATION AND CASING RECORD

Formation	Top	Bottom	Top Pay	Bottom Pay	Remarks	Casing	
						Size	Set at
Red Rock	912	950				10"	533
Red Rock	960	985					
Autria	1360	1476					
Traverse	1557		1557	1558-	Show oil and gas		
Dundee	1693 ?						
Total Depth		1763					

Remarks No salt water encountered.

Signed D. C. Shackelford