



Western Michigan University
ScholarWorks at WMU

Legacy Scout Tickets from Pure Oil Company

8-20-2021

MGRRE_PureOilScoutTickets_Glidden_1_21077050620000

MGRRE

Western Michigan University

Follow this and additional works at: <https://scholarworks.wmich.edu/pure>



Part of the Geology Commons

WMU ScholarWorks Citation

MGRRE, "MGRRE_PureOilScoutTickets_Glidden_1_21077050620000" (2021). *Legacy Scout Tickets from Pure Oil Company*. 3836.

<https://scholarworks.wmich.edu/pure/3836>

This Document is brought to you for free and open access via ScholarWorks at WMU. It has been accepted for inclusion in Legacy Scout Tickets from Pure Oil Company by an authorized administrator of ScholarWorks at WMU. See the National Digital Catalogue - Science Base Catalogue for more collections submitted by MGRRE.



MGRRE_PureOilScoutTickets_Glidden_1_21077050620000

API 21077050620000

Permit Number 5062

Lease Name Glidden

Well Number 1

County Kalamazoo

Township 02S

Range 12W

Section 26

2021 DEQ or Pure co_name F M W. Oil Company

Pure Number 7

Latitude 42.27348

Longitude -85.68121

The Pure Oil Company
THE PURE OIL COMPANY
COMPLETION RECORD OF WELLS DRILLED BY OTHER OPERATORS

DATE June 9, 1938

LOCATION REPORT

No. 7

STATE Michigan COUNTY Kalamazoo TWP. Oshtemo SEC. 26 TOWN 2 S RANGE 12 W

WELL No. 1 (SERIAL No. 7) FARM Ralph S. Glidden ACRES

NAME OF STREAM OR WATERS _____ QUADRANGLE NW-NE-NW

OPERATOR F. M. W. Oil Company Map Oshtemo Township, Kalamazoo County

231 231 Feet from North Line of Farm

_____ " " East " " "

_____ " " South " " "

_____ " " West " " "

231 231 Feet from North Line of Section

1017 1017 " " East " " "

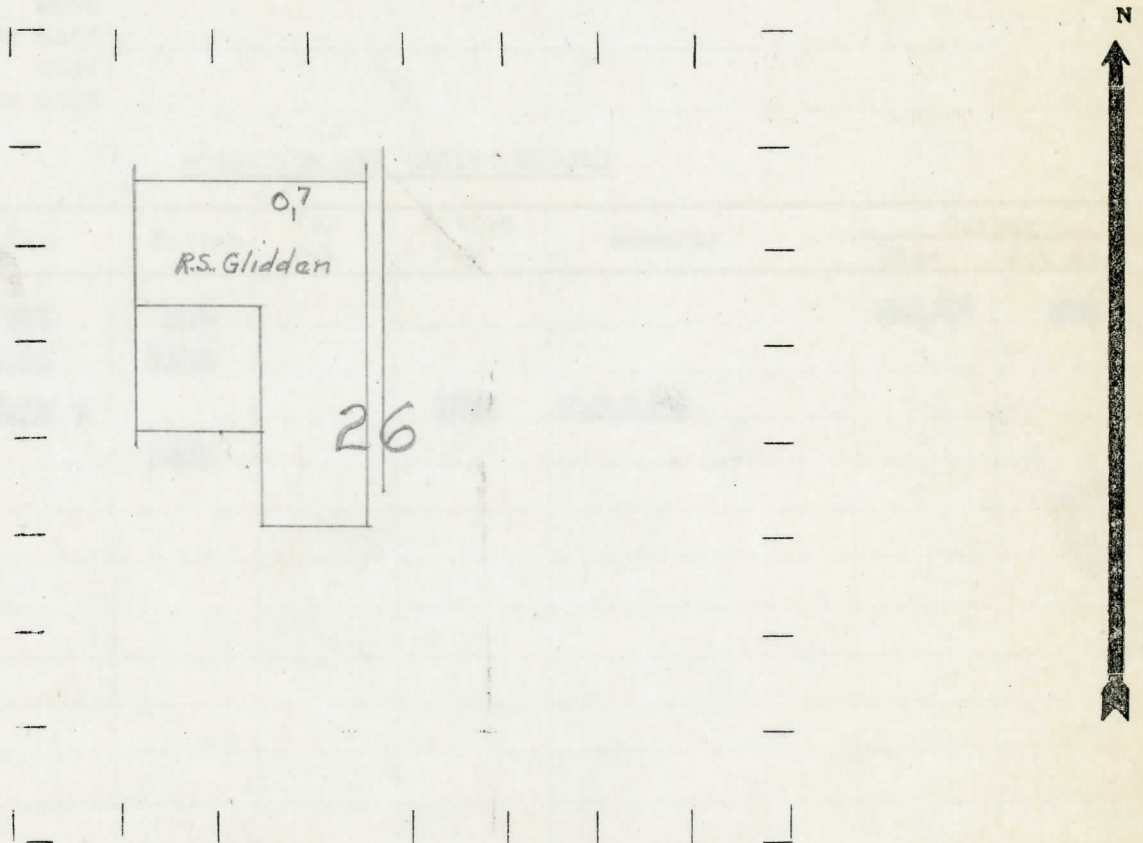
_____ " " South " " "

_____ " " West " " "

LEGEND

- LOCATION
- ⊙ RIG
- ⊕ DRILLING
- ☀ GAS WELL
- OIL WELL
- SMALL OIL WELL
- ⊙ DRY HOLE
- DRY SHOWING OIL
- ☀ DRY SHOWING GAS
- ⊙ ABANDONED LOCATION
- ☀ ABANDONED GAS WELL
- ABANDONED OIL WELL

NOTE: Below make tracing from map, (when no map is obtainable make sketch) showing farm, center of section, this location with measurements and also wells, dry holes, or other locations in the vicinity of this location.



REMARKS:

SIGNED

R. S. Glidden

Superintendent or Foreman.

