



Western Michigan University
ScholarWorks at WMU

Legacy Scout Tickets from Pure Oil Company

8-20-2021

MGRRE_PureOilScoutTickets_Munson_1_21077050630000

MGRRE

Western Michigan University

Follow this and additional works at: <https://scholarworks.wmich.edu/pure>



Part of the Geology Commons

WMU ScholarWorks Citation

MGRRE, "MGRRE_PureOilScoutTickets_Munson_1_21077050630000" (2021). *Legacy Scout Tickets from Pure Oil Company*. 3837.

<https://scholarworks.wmich.edu/pure/3837>

This Document is brought to you for free and open access via ScholarWorks at WMU. It has been accepted for inclusion in Legacy Scout Tickets from Pure Oil Company by an authorized administrator of ScholarWorks at WMU. See the National Digital Catalogue - Science Base Catalogue for more collections submitted by MGRRE.



MGRRE_PureOilScoutTickets_Munson_1_21077050630000

API 21077050630000

Permit Number 5063

Lease Name Munson

Well Number 1

County Kalamazoo

Township 02S

Range 12W

Section 9

2021 DEQ or Pure co_name Premier Oil Corporation

Pure Number 8

Latitude 42.31657

Longitude -85.7073

DATE June 9, 1938

LOCATION REPORT

No. 8

STATE Michigan COUNTY Kalamazoo DIST. Oshtemo TWP. Oshtemo SEC. 9 TOWN. 2 S RANGE 12 W

WELL No. 1 (SERIAL No. 8) FARM Calvin C. Munson ACRES

NAME OF STREAM OR WATERS _____ QUADRANGLE NE NE NE

OPERATOR Premier Oil Corporation Map Oshtemo Township, Kalamazoo County

337 337 Feet from North Line of Farm

290 290 " " East " " "

" " South " " "

" " West " " "

337 337 Feet from North Line of Section

240 240 " " East " " "

" " South " " "

" " West " " "

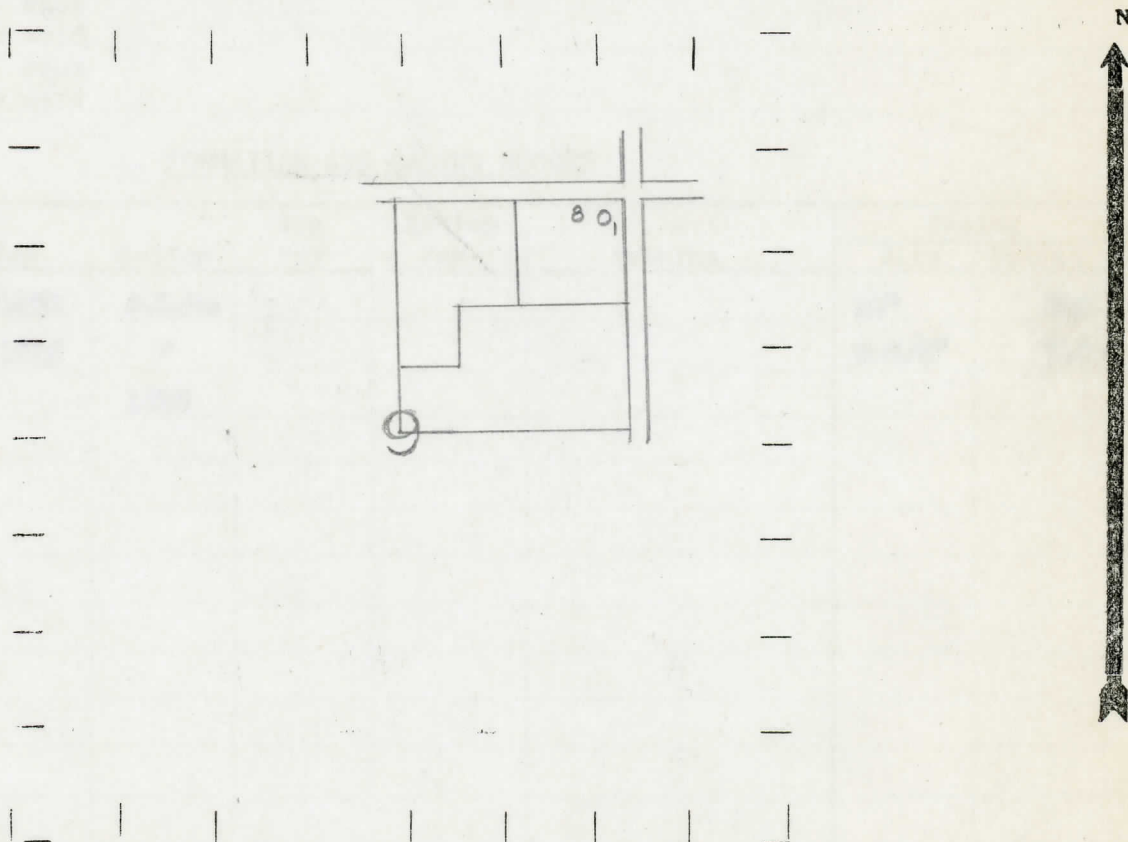
Low

LEGEND

- LOCATION
- ⊕ RIG
- ⊕ DRILLING
- ☀ GAS WELL
- OIL WELL
- ⊕ SMALL OIL WELL

- ⊕ DRY HOLE
- ⊕ DRY SHOWING OIL
- ⊕ DRY SHOWING GAS
- ⊕ ABANDONED LOCATION
- ☀ ABANDONED GAS WELL
- ⊕ ABANDONED OIL WELL

NOTE: Below make tracing from map, (when no map is obtainable make sketch) showing farm, center of section, this location with measurements and also wells, dry holes, or other locations in the vicinity of this location.



REMARKS:

SIGNED

R. A. G.

Superintendent or Foreman

