



Legacy Scout Tickets from Pure Oil Company

8-20-2021

MGRRE_PureOilScoutTickets_Harper, Harold & Mabelle_1_21077056980000

MGRRE

Western Michigan University

Follow this and additional works at: <https://scholarworks.wmich.edu/pure>



Part of the Geology Commons

WMU ScholarWorks Citation

MGRRE, "MGRRE_PureOilScoutTickets_Harper, Harold & Mabelle_1_21077056980000" (2021). *Legacy Scout Tickets from Pure Oil Company*. 3838.
<https://scholarworks.wmich.edu/pure/3838>

This Document is brought to you for free and open access via ScholarWorks at WMU. It has been accepted for inclusion in Legacy Scout Tickets from Pure Oil Company by an authorized administrator of ScholarWorks at WMU. See the National Digital Catalogue - Science Base Catalogue for more collections submitted by MGRRE.



MGRRE_PureOilScoutTickets_Harper, Harold & Mabelle_1_21077056980000

API 21077056980000

Permit Number 5698

Lease Name Harper, Harold & Mabelle

Well Number 1

County Kalamazoo

Township 04S

Range 10W

Section 26

2021 DEQ or Pure co_name Premier Oil Corporation

Pure Number 9

Latitude 42.09161

Longitude -85.44734

DATE December 15, 1938

LOCATION REPORT

No. 9

STATE Michigan COUNTY Kalamazoo DIST. Brady TWP. Brady SEC. 26 TOWN 4 S RANGE 10 W
WELL No. 1 (SERIAL No. 9) FARM Harold Harper

NAME OF STREAM OR WATERS QUADRANGLE NE NW SW - SW

OPERATOR Premier Oil Corporation Map Brady Township, Kalamazoo County

504504 Feet from North Line of Farm
458458 " " East " " "
" " South " " "
" " West " " "
504504 Feet from North Line of Section
" " East " " "
" " South " " "
862 862 " " West " " "

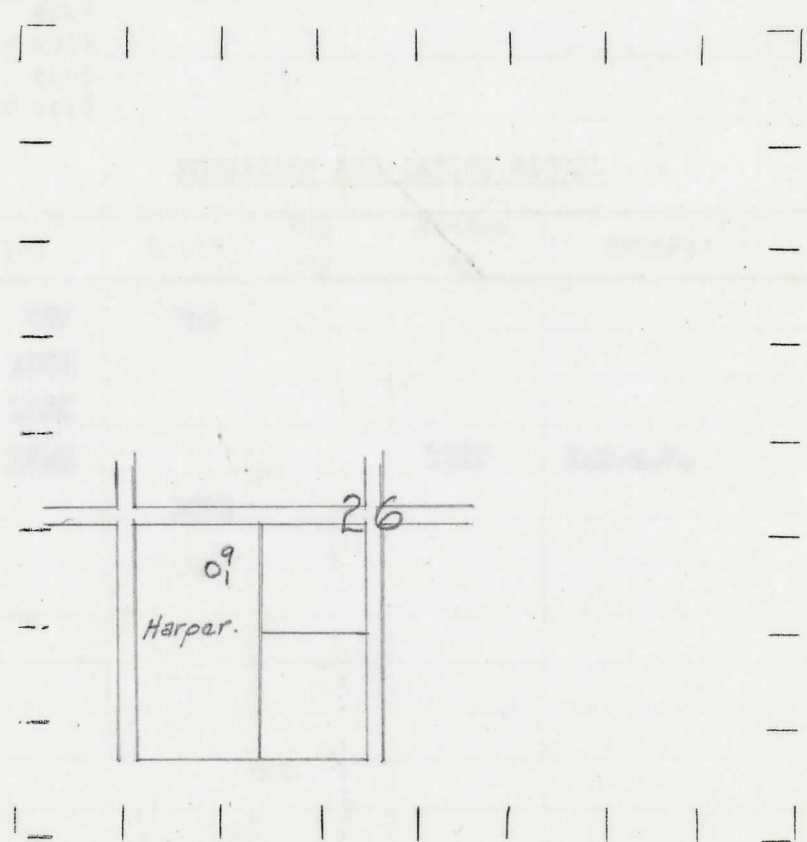
Low

Brady - Kalamazoo

LEGEND

- LOCATION
- ⊕ RIG
- ⊕ DRILLING
- ☀ GAS WELL
- OIL WELL
- ⬮ SMALL OIL WELL
- ⊖ DRY HOLE
- ⊕ DRY SHOWING OIL
- ☀ DRY SHOWING GAS
- ⊖ ABANDONED LOCATION
- ☀ ABANDONED GAS WELL
- ⬮ ABANDONED OIL WELL

NOTE: Below make tracing from map, (when no map is obtainable make sketch) showing farm, center of section, this location with measurements and also wells, dry holes, or other locations in the vicinity of this location.



REMARKS:

SIGNED

R. P. G.

Superintendent or Foreman.

