



Western Michigan University
ScholarWorks at WMU

Legacy Scout Tickets from Pure Oil Company

8-20-2021

**MGRRE_PureOilScoutTickets_Kirby, G. W.
Estate_1_21077064130000**

MGRRE
Western Michigan University

Follow this and additional works at: <https://scholarworks.wmich.edu/pure>



Part of the Geology Commons

WMU ScholarWorks Citation

MGRRE, "MGRRE_PureOilScoutTickets_Kirby, G. W. Estate_1_21077064130000" (2021). *Legacy Scout Tickets from Pure Oil Company*. 3842.
<https://scholarworks.wmich.edu/pure/3842>

This Document is brought to you for free and open access via ScholarWorks at WMU. It has been accepted for inclusion in Legacy Scout Tickets from Pure Oil Company by an authorized administrator of ScholarWorks at WMU. See the National Digital Catalogue - Science Base Catalogue for more collections submitted by MGRRE.



MGRRE_PureOilScoutTickets_Kirby, G. W. Estate_1_21077064130000

API 21077064130000

Permit Number 6413

Lease Name Kirby, G. W. Estate

Well Number 1

County Kalamazoo

Township 02S

Range 09W

Section 5

2021 DEQ or Pure co_name Dickerson, R. R. Trustee

Pure Number 13

Latitude 42.33209

Longitude -85.38988

THE PURE OIL COMPANY

DATE July 7, 1939

LOCATION REPORT

No. 13

STATE Michigan COUNTY Kalamazoo DISTRICT Charleston TWP. Charleston SEC. 5 TOWN 2 S RANGE 9 W
WELL No. 1 (SERIAL No. 13) FARM PREC. G.W. Kirby Estate ACRES

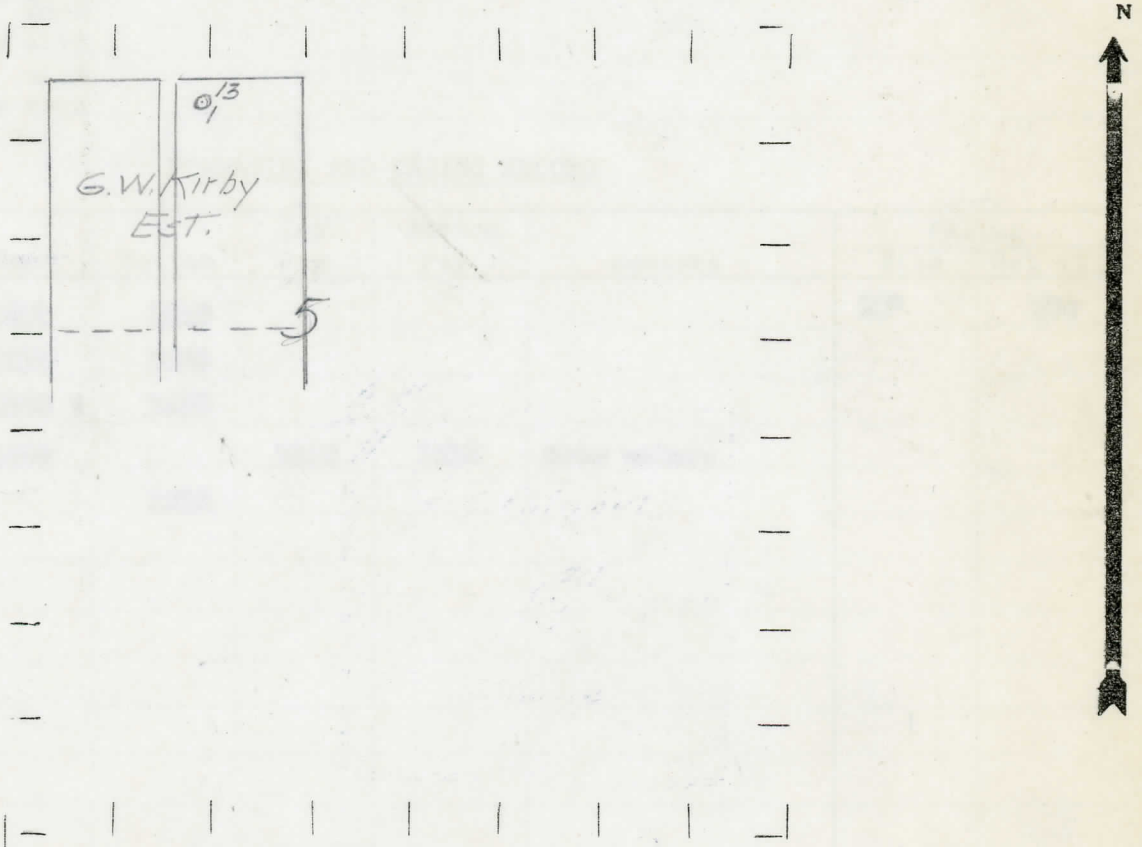
NAME OF STREAM OR WATERS OPERATOR R. Roy Dickerson, Trustee QUADRANGLE NW NE NW
Map Charleston Township, Kalamazoo County

33330 Feet from North Line of Farm
870870 " " East " " "
" " South " " "
" " West " " "
24243 Feet from North Line of Section
870870 " " East " 1/4 "
" " South " " "
" " West " " "

LEGEND

- LOCATION
- ⊕ RIG
- ⊕ DRILLING
- ☀ GAS WELL
- OIL WELL
- ⬮ SMALL OIL WELL
- ⊖ DRY HOLE
- ⬮ DRY SHOWING OIL
- ⊖ DRY SHOWING GAS
- ⊖ ABANDONED LOCATION
- ☀ ABANDONED GAS WELL
- ⬮ ABANDONED OIL WELL

NOTE: Below make tracing from map, (when no map is obtainable make sketch) showing farm, center of section, this location with measurements and also wells, dry holes, or other locations in the vicinity of this location.



REMARKS:

SIGNED

Superintendent or Foreman.

