



Western Michigan University  
ScholarWorks at WMU

---

Legacy Scout Tickets from Pure Oil Company

---

8-20-2021

**MGRRE\_PureOilScoutTickets\_Johnson, C D\_1\_21077067040000**

MGRRE

*Western Michigan University*

Follow this and additional works at: <https://scholarworks.wmich.edu/pure>



Part of the Geology Commons

---

#### **WMU ScholarWorks Citation**

MGRRE, "MGRRE\_PureOilScoutTickets\_Johnson, C D\_1\_21077067040000" (2021). *Legacy Scout Tickets from Pure Oil Company*. 3848.

<https://scholarworks.wmich.edu/pure/3848>

This Document is brought to you for free and open access via ScholarWorks at WMU. It has been accepted for inclusion in Legacy Scout Tickets from Pure Oil Company by an authorized administrator of ScholarWorks at WMU. See the National Digital Catalogue - Science Base Catalogue for more collections submitted by MGRRE.



---

**MGRRE\_PureOilScoutTickets\_Johnson, C D\_1\_21077067040000**

API 21077067040000

Permit Number 6704

Lease Name Johnson, C D

Well Number 1

County Kalamazoo

Township 02S

Range 10W

Section 36

2021 DEQ or Pure co\_name Smith Petroleum Company

Pure Number 19

Latitude 42.25338

Longitude -85.43087

THE PURE OIL COMPANY  
COMPLETION RECORD OF WELLS DRILLED BY OTHER OPERATORS  
LOCATION REPORT

DATE September 7, 1939

No. 19

STATE Michigan COUNTY Kalamazoo DIST. Comstock TWP. Comstock SEC. 36 TOWN 22S RANGE 10W

WELL No. 1 (SERIAL No. 19) FARM G. D. Johnson ACRES

NAME OF STREAM OR WATERS \_\_\_\_\_ QUADRANGLE C 36 SW NW

OPERATOR Smith Petroleum Company Map Comstock Township, Kalamazoo County

Feet from North Line of Farm

\_\_\_\_\_ " " East " " "

33330 " " South " " "

66660 " " West " " "

Feet from North Line of Section

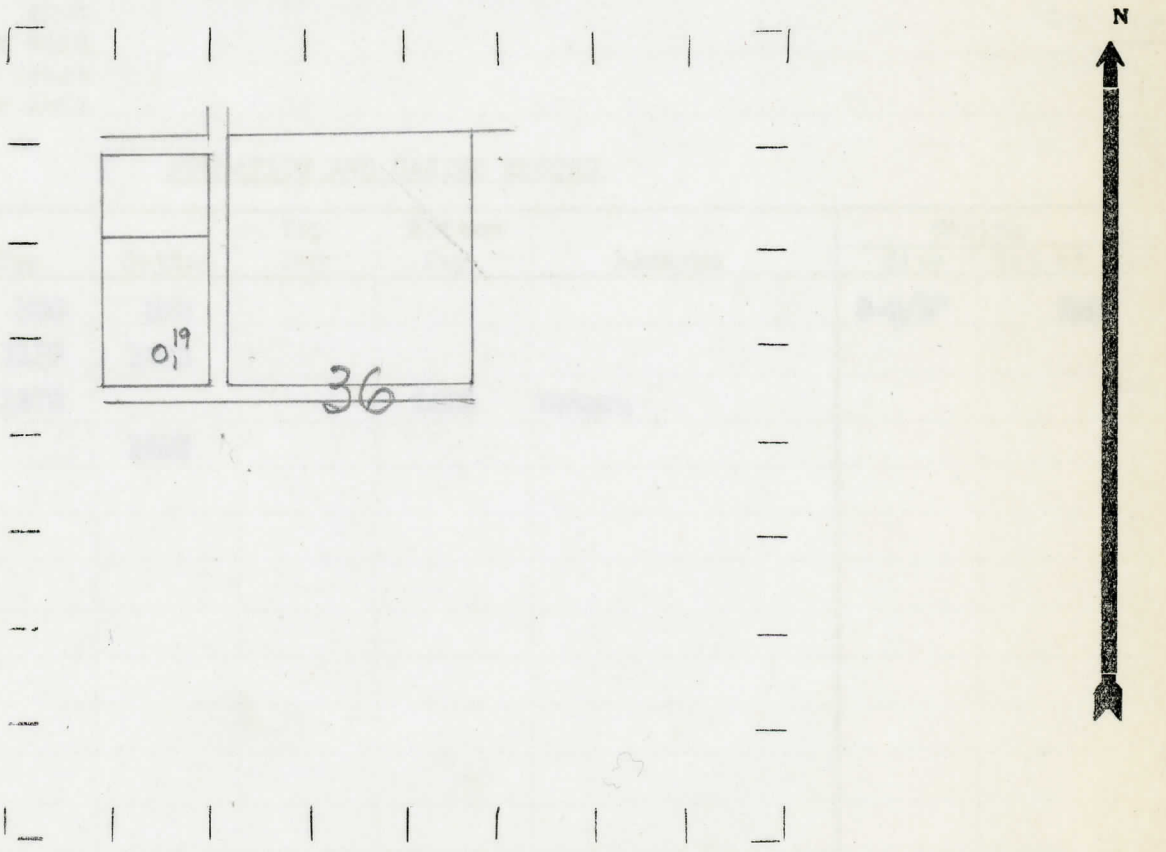
\_\_\_\_\_ " " East " " "

330330 " " South " 1/4 "

66660 " " West " " "

- LEGEND**
- LOCATION
  - ⊕ RIG
  - ⊕ DRILLING
  - ☀ GAS WELL
  - OIL WELL
  - SMALL OIL WELL
  - ⊖ DRY HOLE
  - ⊖ DRY SHOWING OIL
  - ⊖ DRY SHOWING GAS
  - ⊖ ABANDONED LOCATION
  - ☀ ABANDONED GAS WELL
  - ⊖ ABANDONED OIL WELL

NOTE: Below make tracing from map, (when no map is obtainable make sketch) showing farm, center of section, this location with measurements and also wells, dry holes, or other locations in the vicinity of this location.



REMARKS:  
\_\_\_\_\_  
\_\_\_\_\_  
\_\_\_\_\_

SIGNED \_\_\_\_\_  
Superintendent or Foreman.

Michigan Producing Division

Date **September 28, 1939** No. **19**  
 State **Mich.** County **Kalamazoo** ~~Comstock~~ Twp. **Comstock** Sec. **36** Twp. **2 S** Rge. **10 W**  
 Well No. **1** (~~Comstock~~) **19** Farm **G. D. Johnson** Acres  
 Operator **Smith Petroleum Company** Information secured ~~from~~ **By Scouting Department**  
 Date well started **9-6-39** Dated well completed **9-19-39** Elevation **882.3**

PRODUCTION RECORD

1st 24 hours natural **Dry Hole**  
 2nd 24 hours natural  
 Date of shot No. of quarts From to From to  
 Date of acid No. of gallons  
 1st 24 hours after acid shot  
 2nd 24 hours after acid shot

FORMATION AND CASING RECORD

Formation	Top	Bottom	Top Pay	Bottom Pay	Remarks	Casing	
						Size	Set at
Red Rock	880	890				8-5/8"	201
Antrim	1117	1305					
Traverse Lime	1375			1408	Water.		
Total Depth		1408					

Remarks

Signed **D. C. Shackelford**