



Western Michigan University
ScholarWorks at WMU

Legacy Scout Tickets from Pure Oil Company

8-20-2021

MGRRE_PureOilScoutTickets_Mott Estate_1_21077084330000

MGRRE

Western Michigan University

Follow this and additional works at: <https://scholarworks.wmich.edu/pure>



Part of the Geology Commons

WMU ScholarWorks Citation

MGRRE, "MGRRE_PureOilScoutTickets_Mott Estate_1_21077084330000" (2021). *Legacy Scout Tickets from Pure Oil Company*. 3862.

<https://scholarworks.wmich.edu/pure/3862>

This Document is brought to you for free and open access via ScholarWorks at WMU. It has been accepted for inclusion in Legacy Scout Tickets from Pure Oil Company by an authorized administrator of ScholarWorks at WMU. See the National Digital Catalogue - Science Base Catalogue for more collections submitted by MGRRE.



MGRRE_PureOilScoutTickets_Mott Estate_1_21077084330000

API 21077084330000

Permit Number 8433

Lease Name Mott Estate

Well Number 1

County Kalamazoo

Township 01S

Range 12W

Section 2

2021 DEQ or Pure co_name Cook, Spencer W. Trustee

Pure Number 33

Latitude 42.40533

Longitude -85.68798

THE PURE OIL COMPANY

DATE February 19, 1941

LOCATION REPORT

No. 33

COMPLETION RECORD OF WELLS DRILLED BY OTHER OPERATORS

STATE Michigan

COUNTY Kalamazoo

TWP Alamo

SEC 2

TOWN 1 S

RANGE 12 W

WELL No. 1/ (SERIAL No. 333) FARM

PRECK Mott Estate

ACRES

NAME OF STREAM OR WATERS

QUADRANGLE SW-SW-SW

OPERATOR W. Spencer Cook

Map Alamo Township, Kalamazoo County

W. Spencer Cook

Alamo - Kalamazoo

Feet from North Line of Farm

.....	"	"	East	"	"	"
330	330	"	South	"	"	"
330	330	"	West	"	"	"

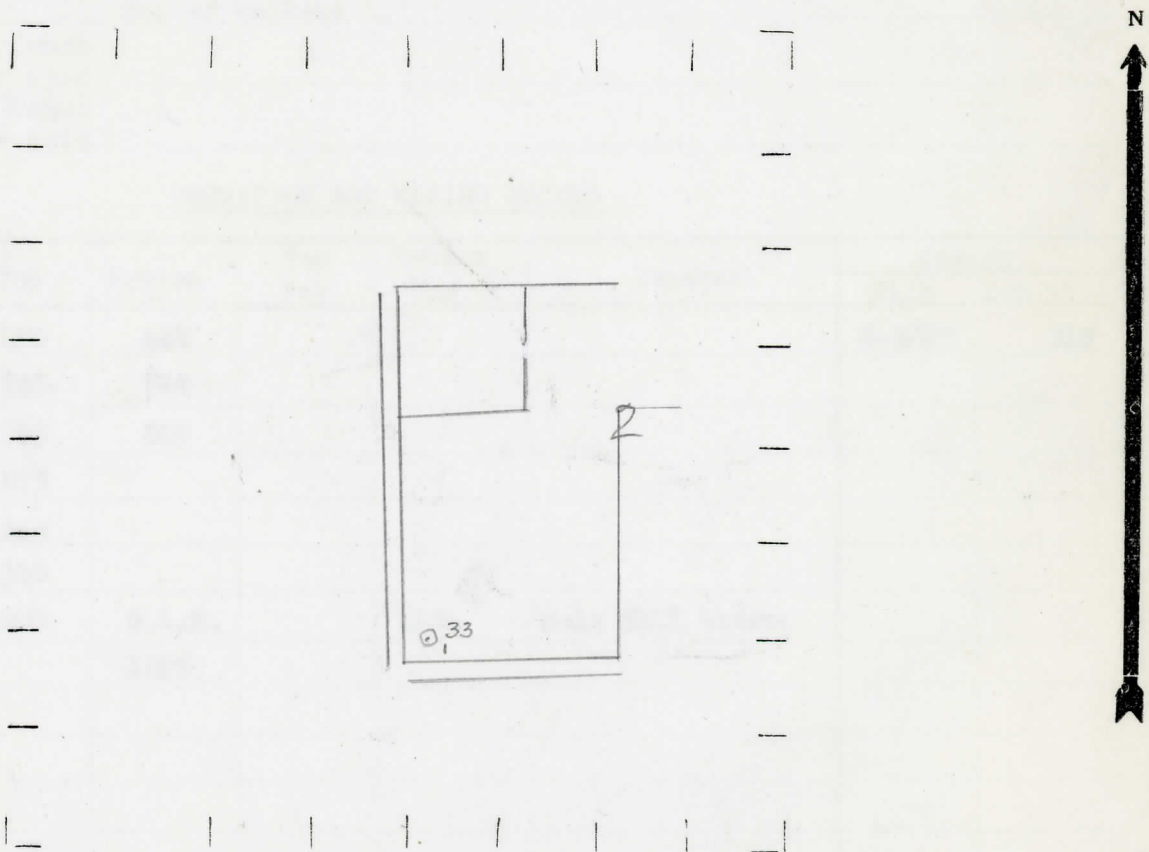
Feet from North Line of Section

.....	"	"	East	"	"	"
330	330	"	South	"	1/4/4	"
330	330	"	West	"	"	"

LEGEND

- LOCATION
- ⊙ RIG
- ⊕ DRILLING
- ☀ GAS WELL
- OIL WELL
- SMALL OIL WELL
- ⊙ DRY HOLE
- ◆ DRY SHOWING OIL
- ⊙ DRY SHOWING GAS
- ⊙ ABANDONED LOCATION
- ☀ ABANDONED GAS WELL
- ABANDONED OIL WELL

NOTE: Below make tracing from map. (when no map is obtainable make sketch) showing farm, center of section, this location with measurements and also wells, dry holes, or other locations in the vicinity of this location.



REMARKS:

SIGNED

W

Superintendent or Foreman.

OBERLYON M. SPENCER COOK
 NAME OF BUREAU OR MAINTENANCE
 WELLS NO. 1 (SERIAL NO. 33) TOWN 13 RANGE 12 W

Date March 26, 1941 No. 33
 State Mich. County Kalamazoo Desc. Alamo
 Twp. Alamo Sec. 2 Twp. 1 S Rge. 12 W
 Well No. 1 (Serial No.) (County No.) 33 Farm Mott Estate Acres
 Operator W. Spencer Cook Information secured By Scouting Department
 Date well started 3-2-41 Date well completed 3-19-41 Elevation 768.1

PRODUCTION RECORD

1st 24 hours natural Dry Hole
 2nd 24 hours natural
 Date of shot No. of quarts From to From to
 Date of acid No. of gallons
 1st 24 hours after acid shot
 2nd 24 hours after acid shot

FORMATION AND CASING RECORD

Formation	Top	Bottom	Top Pay	Bottom Pay	Remarks	Casing	
						Size	Set at
Coldwater Lime	400	440				8-5/8"	310
Red Rock	765	769					
" "	785	809					
Antrim (light)	1175						
Antrim (dark)	1215						
Traverse Form.	1340						
Traverse Lime	1400	S.L.M.		1404	Hole full water.		
Total Depth		1405					

Remarks

Signed D. C. Shackelford