



Western Michigan University  
ScholarWorks at WMU

---

Legacy Scout Tickets from Pure Oil Company

---

8-20-2021

**MGRRE\_PureOilScoutTickets\_Bishop, L H\_1\_21077106260000**

MGRRE

*Western Michigan University*

Follow this and additional works at: <https://scholarworks.wmich.edu/pure>



Part of the Geology Commons

---

#### **WMU ScholarWorks Citation**

MGRRE, "MGRRE\_PureOilScoutTickets\_Bishop, L H\_1\_21077106260000" (2021). *Legacy Scout Tickets from Pure Oil Company*. 3866.

<https://scholarworks.wmich.edu/pure/3866>

This Document is brought to you for free and open access via ScholarWorks at WMU. It has been accepted for inclusion in Legacy Scout Tickets from Pure Oil Company by an authorized administrator of ScholarWorks at WMU. See the National Digital Catalogue - Science Base Catalogue for more collections submitted by MGRRE.



---

**MGRRE\_PureOilScoutTickets\_Bishop, L H\_1\_21077106260000**

API 21077106260000

Permit Number 10626

Lease Name Bishop, L H

Well Number 1

County Kalamazoo

Township 02S

Range 12W

Section 5

2021 DEQ or Pure co\_name Fisher McCall Oil and Gas, Incorporated

Pure Number 37

Latitude 42.33068

Longitude -85.74405

# THE PURE OIL COMPANY LOCATION REPORT

Date February 9, 1944 A.F.E. No. \_\_\_\_\_

Division Mich. Producing District \_\_\_\_\_ Lease L. H. Bishop

Acres \_\_\_\_\_ Lease No. \_\_\_\_\_ Elevation \_\_\_\_\_ Well No. 1 (Serial No. 37)

Quadrangle NW-NW-NW Sec. 5 Twp. 2S Rge. 12W Twp. Oshtemo

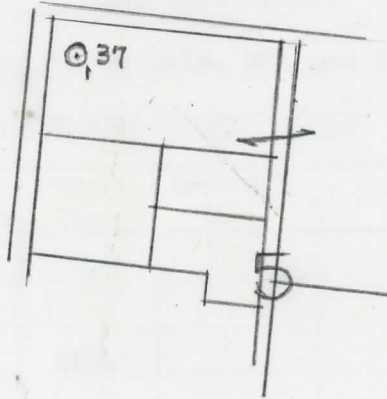
Survey \_\_\_\_\_ County Kalamazoo State Michigan

Operator Fisher-McCall Oil & Gas, Inc. Map Oshtemo Twp - Kalamazoo Co

|            |            |                                 |
|------------|------------|---------------------------------|
| <u>330</u> | <u>330</u> | Feet from North Line of Lease   |
|            |            | " " East " " "                  |
|            |            | " " South " " "                 |
| <u>330</u> | <u>330</u> | Feet from North Line of Section |
|            |            | " " East " " "                  |
|            |            | " " South " " "                 |
| <u>330</u> | <u>330</u> | " " West " " "                  |

### LEGEND

- Location
- ☀ Gas Well
- Oil Well
- ☼ Gas - Distillate Well
- ⊙ or ○ Dry Hole
- or ○ Dry Showing Oil
- ☼ Dry Showing Gas
- ⊙ Abandoned Location
- ☼ or ☼ Abandoned Gas Well
- or ● Abandoned Oil Well
- ⊙ or ○ Input Well



Scale \_\_\_\_\_

Remarks: \_\_\_\_\_

Submitted by RN Civil Engineer Approved by \_\_\_\_\_ Division Manager

Approved by \_\_\_\_\_ Vice-President - General Manager

Michigan Producing Division

Date April 26, 1944 No. 37  
 State Mich. County Kalamazoo Dist. Oshtemo Twp. 5 Sec. 5 Twp. 2 S Rge. 12 W  
 (Serial No.)  
 Well No. 1 (County No.) 37 Farm L. H. Bishop Acres \_\_\_\_\_  
 Operator Fisher-McCall Oil & Gas, Inc. Information secured ~~from~~ Scouting Department By \_\_\_\_\_  
 Date well started 2-18-44 Date well completed 3-2-44 Elevation 841.1

PRODUCTION BOARD

1st 24 hours natural Dry Hole  
 2nd 24 hours natural \_\_\_\_\_  
 Date of shot \_\_\_\_\_ No. of quarts \_\_\_\_\_ From \_\_\_\_\_ to \_\_\_\_\_ From \_\_\_\_\_ to \_\_\_\_\_  
 Date of acid 4-13-44 No. of gallons 500  
 1st 24 hours after acid ~~shot~~ All salt water.  
 2nd 24 hours after acid ~~shot~~ 20 Bbls. Oil and 325 Bbls. Salt Water (Pumped)

FORMATION AND CASING RECORD

| Formation       | Top  | Bottom | Top Pay | Bottom Pay | Remarks  | Casing  |        |
|-----------------|------|--------|---------|------------|--|---------|--------|
|                 |      |        |         |            |  | Size    | Set at |
| Goldw. Red Rock | 736  | 745    |         |            |  | 8-5/8"  | 304    |
| " " "           | 755  | 762    |         |            |  | 6-5/8"  | 532    |
| " " "           | 784  | 793    | SLM.    |            |  | 5-3/16" | 1357   |
| Antrim (light)  | 1075 |        |         |            |  |         |        |
| Antrim (dark)   | 1153 |        |         |            |  |         |        |
| Traverse Form.  | 1323 | CTM.   |         |            |  |         |        |
| Traverse Lime   | 1391 | SLM.   |         |            | Show oil and gas<br>1391-1392.<br>Water 1391-1392. |         |        |
| Total Depth     |      | 1392   |         |            |  |         |        |

Remarks Filled up with 200 ft. oil and 500 ft. salt water 1st. 12 hours natural.

Signed D. C. Shackelford