



Western Michigan University  
ScholarWorks at WMU

---

Legacy Scout Tickets from Pure Oil Company

---

8-20-2021

**MGRRE\_PureOilScoutTickets\_Bishop,  
Henry\_B-1\_21077108450000**

MGRRE  
*Western Michigan University*

Follow this and additional works at: <https://scholarworks.wmich.edu/pure>



Part of the Geology Commons

---

#### **WMU ScholarWorks Citation**

MGRRE, "MGRRE\_PureOilScoutTickets\_Bishop, Henry\_B-1\_21077108450000" (2021). *Legacy Scout Tickets from Pure Oil Company*. 3869.  
<https://scholarworks.wmich.edu/pure/3869>

This Document is brought to you for free and open access via ScholarWorks at WMU. It has been accepted for inclusion in Legacy Scout Tickets from Pure Oil Company by an authorized administrator of ScholarWorks at WMU. See the National Digital Catalogue - Science Base Catalogue for more collections submitted by MGRRE.



---

**MGRRE\_PureOilScoutTickets\_Bishop, Henry\_B-1\_21077108450000**

API 21077108450000

Permit Number 10845

Lease Name Bishop, Henry

Well Number B-1

County Kalamazoo

Township 02S

Range 12W

Section 5

2021 DEQ or Pure co\_name Fisher McCall Oil and Gas, Incorporated

Pure Number 40

Latitude 42.32886

Longitude -85.73424

# THE PURE OIL COMPANY LOCATION REPORT

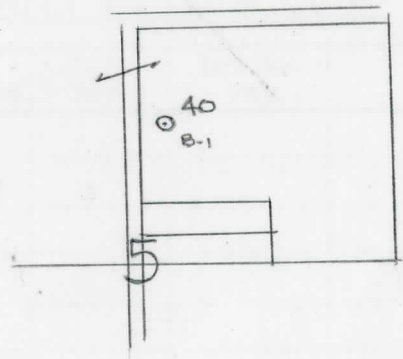
Date June 15, 1944 A.F.E. No. \_\_\_\_\_  
 Division Mich. Producing District \_\_\_\_\_ Lease Henry Bishop  
 Acres \_\_\_\_\_ Lease No. \_\_\_\_\_ Elevation \_\_\_\_\_ Well No. B-1 (Serial No. 40)  
 Quadrangle SW-NW-NE Sec. 5 Twp. 2 S Rge. 12 W ~~JENK~~ ~~RISK~~ Twp. Oshtemo  
 Survey \_\_\_\_\_ County Kalamazoo State Michigan  
 Operator Fisher-McCall Oil & Gas, Inc. Map Oshtemo Twp - Kalamazoo Co

		Feet from North Line of Lease
		" " East " " "
<u>330</u>	<u>330</u>	" " South " " "
<u>330</u>	<u>330</u>	" " West " <u>1/4</u> "
<u>990</u>	<u>990</u>	Feet from North Line of Section
		" " East " " "
		" " South " " "
<u>330</u>	<u>330</u>	" " West " " "

### LEGEND

- Location
- ☀ Gas Well
- Oil Well
- ☀ Gas - Distillate Well
- or ○ Dry Hole
- Dry Showing Oil
- ☀ Dry Showing Gas
- ⊗ Abandoned Location
- ☀ or ☀ Abandoned Gas Well
- or ● Abandoned Oil Well
- ⊗ or ⊗ Input Well

*Handwritten notes:*  
 ne 360 sp 6-8  
 8 5/8 cor 323



Scale \_\_\_\_\_

Remarks: \_\_\_\_\_  
 \_\_\_\_\_  
 \_\_\_\_\_

Submitted by EN Civil Engineer Approved by \_\_\_\_\_ Division Manager  
 Approved by \_\_\_\_\_ Vice-President - General Manager

THE PURE OIL COMPANY

COMPLETION RECORD OF WELLS DRILLED BY OTHER OPERATORS

Michigan Producing Division

Date June 21, 1944 No. 40  
 State Mich. County Kalamazoo ~~Oshtemo~~ Twp. Oshtemo Sec. 5 Twp. 2 S Rge. 12 W  
 Well No. 1 (Serial No.) B- (Serial No.) 40 Farm Henry Bishop Acres \_\_\_\_\_  
 Operator Fisher-McCall Oil & Gas, Inc. Information secured ~~from~~ Scouting Department By \_\_\_\_\_  
 Date well started 6-8-44 Date well completed 6-19-44 Elevation 836.5

PRODUCTION BOARD

1st 24 hours natural Dry Hole  
 2nd 24 hours natural \_\_\_\_\_  
 Date of shot \_\_\_\_\_ No. of quarts \_\_\_\_\_ From \_\_\_\_\_ to \_\_\_\_\_ From \_\_\_\_\_ to \_\_\_\_\_  
 Date of acid \_\_\_\_\_ No. of gallons \_\_\_\_\_  
 1st 24 hours after acid shot \_\_\_\_\_  
 2nd 24 hours after acid shot \_\_\_\_\_

FORMATION AND CASING RECORD

Formation	Top	Bottom	Top Pay	Bottom Pay	Remarks	Casing	
						Size	Set at
Coldwater Lime	424 (x 4 1/2)	490				8-5/8"	323
Coldw. Red Rock	781 (x 5 1/2)	796					
Antrim (light)	1145 (x 3 1/2)						
Antrim (dark)	1200 (x 3 1/2)						
Traverse Form.	1323 (x 4 1/2)						
Traverse Lime	1390 (x 5 1/2)				Water (200 ft.) at 1392. (x 5 1/2)		
Total Depth		1392 (x 5 1/2)					

Remarks

Signed D. C. Shackelford