



Western Michigan University
ScholarWorks at WMU

Legacy Scout Tickets from Pure Oil Company

8-20-2021

MGRRE_PureOilScoutTickets_Aderma, A._1_unk

MGRRE

Western Michigan University

Follow this and additional works at: <https://scholarworks.wmich.edu/pure>



Part of the Geology Commons

WMU ScholarWorks Citation

MGRRE, "MGRRE_PureOilScoutTickets_Aderma, A._1_unk" (2021). *Legacy Scout Tickets from Pure Oil Company*. 3899.

<https://scholarworks.wmich.edu/pure/3899>

This Document is brought to you for free and open access via ScholarWorks at WMU. It has been accepted for inclusion in Legacy Scout Tickets from Pure Oil Company by an authorized administrator of ScholarWorks at WMU. See the National Digital Catalogue - Science Base Catalogue for more collections submitted by MGRRE.



MGRRE_PureOilScoutTickets_Aderma, A._1_unk

API unk

Permit Number unk

Lease Name Aderma, A.

Well Number 1

County Kent

Township 07N

Range 02E

Section 22

2021 DEQ or Pure co_name Shell Pet Co

Pure Number 20

Latitude 42.9903985

Longitude -84.2162252

THE PURE OIL COMPANY

DATE Nov. 15, 1929

LOCATION REPORT

No. 20

STATE Michigan COUNTY Kent DIST. Grand Rapids TWP. Grand Rapids SEC. 22 TOWN 7 N RANGE 11 W

WELL No. 1 (SERIAL No. 20) FARM A. Aderma ACRES

NAME OF STREAM OR WATERS QUADRANGLE SE $\frac{1}{4}$ - NE $\frac{1}{4}$

OPERATOR Shell Petroleum Corporation MAP Grand Rapids Twp., Kent County

200 Feet from North Line of Farm

200 " " East " " "

50 " " South " " "

" " West " " "

2590 Feet from North Line of Section

200 " " East " " "

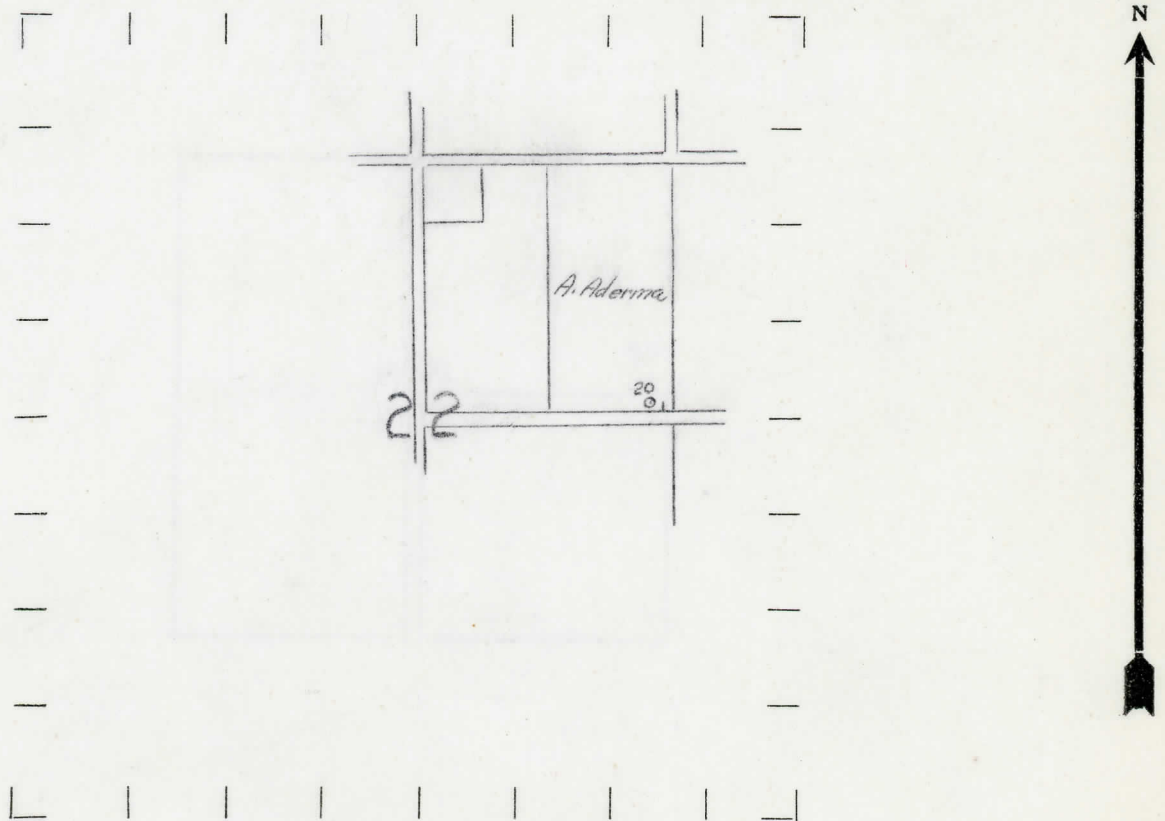
" " South " " "

" " West " " "

LEGEND

- O LOCATION
- ① RIG
- ⊕ DRILLING
- ☼ GAS WELL
- OIL WELL
- ⦿ SMALL OIL WELL
- ◇ DRY HOLE
- ◆ DRY SHOWING OIL
- ⊗ DRY SHOWING GAS
- ⊖ ABANDONED LOCATION
- ☼ ABANDONED GAS WELL
- ⦿ ABANDONED OIL WELL

NOTE: Below make tracing from map, (when no map is obtainable make sketch) showing farm, center of section, this location with measurements and also wells, dry holes, or other locations in the vicinity of this location. Make copy to keep for reference and send original to Columbus office.



REMARKS: Core Test

SIGNED

Superintendent or Foreman.

DATE 11/8/29

LOCATION REPORT

No.

STATE Michigan COUNTY Kent DIST. Grand Rapids SEC. 22 TOWN 7N RANGE 11W

WELL No. 1 (SERIAL No. 20) FARM A. Aderna ACRES

NAME OF STREAM OR WATERS QUADRANGLE SE 1/4 NE 1/4

OPERATOR Shell Petroleum Corp. MAP Kent Co. - Grand Rapids Twp

Feet from North Line of Farm

200 " " East " " "

50 " " South " " "

" " West " " "

2590' Feet from North Line of Section

200' " " East " " "

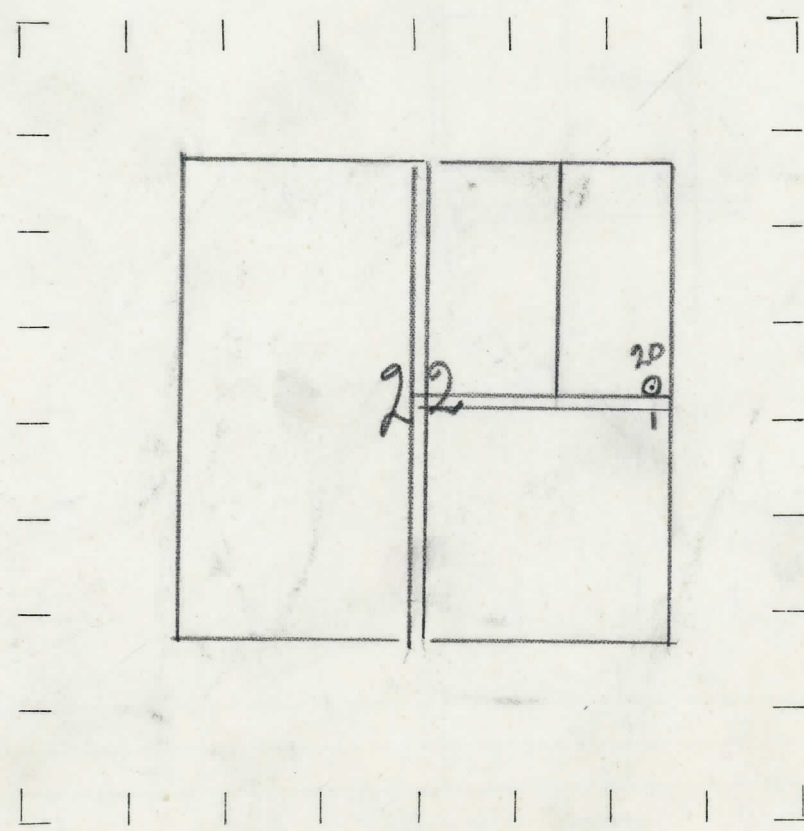
" " South " " "

" " West " " "

LEGEND

- LOCATION
- ⊕ RIG
- ⊕ DRILLING
- ⊗ GAS WELL
- OIL WELL
- ⬮ SMALL OIL WELL
- ⊕ DRY HOLE
- ⊕ DRY SHOWING OIL
- ⊕ DRY SHOWING GAS
- ⊕ ABANDONED LOCATION
- ⊕ ABANDONED GAS WELL
- ⊕ ABANDONED OIL WELL

NOTE: Below make tracing from map, (when no map is obtainable make sketch) showing farm, center of section, this location with measurements and also wells, dry holes, or other locations in the vicinity of this location. Make copy to keep for reference and send original to Columbus office.



REMARKS: Core Test

SIGNED

RA Bell

Superintendent or Foreman.