



Western Michigan University
ScholarWorks at WMU

Legacy Scout Tickets from Pure Oil Company

8-20-2021

**MGRRE_PureOilScoutTickets_Genison, D. M. aka Jenison, D.M.,
aka Rienks_1_unk**

MGRRE

Western Michigan University

Follow this and additional works at: <https://scholarworks.wmich.edu/pure>



Part of the Geology Commons

WMU ScholarWorks Citation

MGRRE, "MGRRE_PureOilScoutTickets_Genison, D. M. aka Jenison, D.M., aka Rienks_1_unk" (2021).
Legacy Scout Tickets from Pure Oil Company. 3901.
<https://scholarworks.wmich.edu/pure/3901>

This Document is brought to you for free and open access via ScholarWorks at WMU. It has been accepted for inclusion in Legacy Scout Tickets from Pure Oil Company by an authorized administrator of ScholarWorks at WMU. See the National Digital Catalogue - Science Base Catalogue for more collections submitted by MGRRE.



MGRRE_PureOilScoutTickets_Genison, D. M. aka Jenison, D.M., aka Rienks_1_unk

API unk

Permit Number unk

Lease Name Genison, D. M. aka Jenison, D.M., aka Rienks

Well Number 1

County Kent

Township 06N

Range 12W

Section 17

2021 DEQ or Pure co_name Shell Pet Co

Pure Number 22

Latitude 42.9063697

Longitude -85.753422

THE PURE OIL COMPANY

DATE Jan. 17, 1930

LOCATION REPORT

No. 22

STATE Michigan COUNTY Kent DIST. Wyoming TWP. Wyoming SEC. 17 TOWN 6 N RANGE 12W

WELL No. 1 (SERIAL No. 22) FARM D. M. Genison ACRES _____

NAME OF STREAM OR WATERS _____ QUADRANGLE SW SW

OPERATOR Shell Petroleum Co. (Core test) MAP Wyoming Twp. Kent County

----- Feet from North Line of Farm

----- " " East " " "

----- " " South " " "

----- " " West " " "

----- Feet from North Line of Section

----- " " East " " "

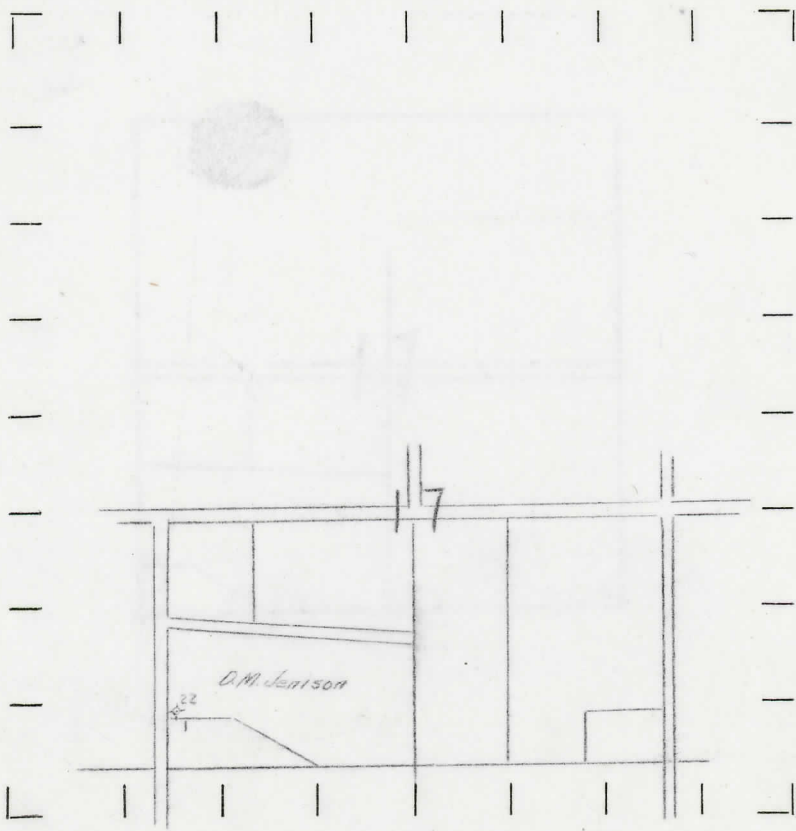
680 " " South " " "

50 " " West " " "

LEGEND

- LOCATION
- ⊕ RIG
- ⊕ DRILLING
- ⊗ GAS WELL
- OIL WELL
- ⬮ SMALL OIL WELL
- ⊕ DRY HOLE
- ⊕ DRY SHOWING OIL
- ⊗ DRY SHOWING GAS
- ⊕ ABANDONED LOCATION
- ⊗ ABANDONED GAS WELL
- ⬮ ABANDONED OIL WELL

NOTE: Below make tracing from map, (when no map is obtainable make sketch) showing farm, center of section, this location with measurements and also wells, dry holes, or other locations in the vicinity of this location. Make copy to keep for reference and send original to Columbus office.



REMARKS: Completed core test.

SIGNED _____

Superintendent or Foreman.

Temp. Map Off

DATE 1/13/30

LOCATION REPORT

No. 22

STATE Michigan COUNTY Kent DIST. Wyoming SEC. 17 TOWN 6N RANGE 12W

WELL No. 1 (SERIAL No. 22) FARM D. M. Jenison ACRES

NAME OF STREAM OR WATERS QUADRANGLE SW-SW

OPERATOR Shell Petroleum Corp MAP Kent Co., Wyoming Twp

Feet from North Line of Farm

20' East

50' South

West

Feet from North Line of Section

East

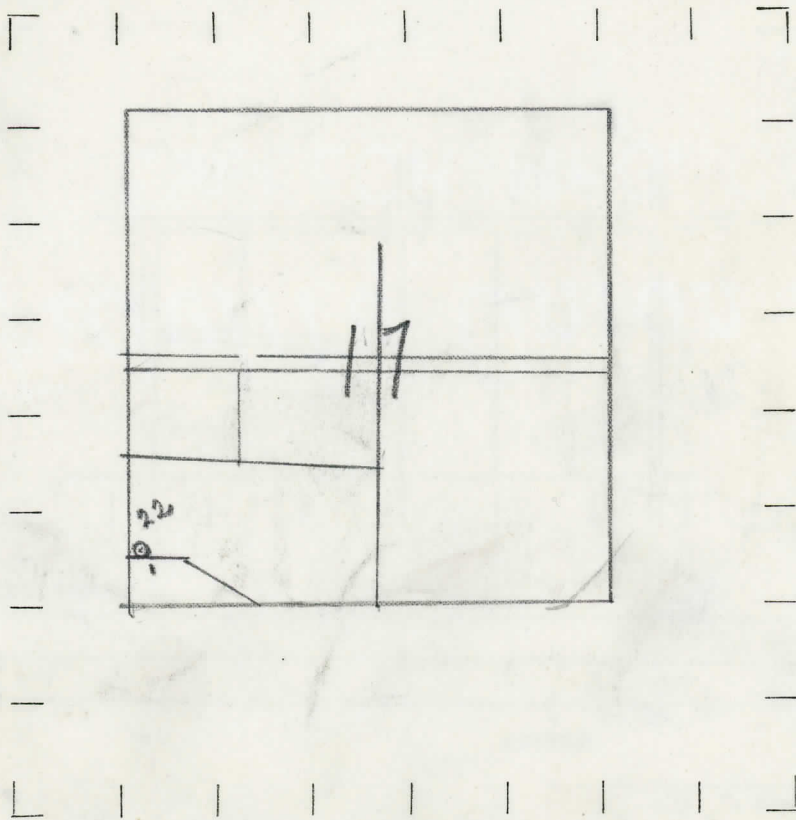
South

West

LEGEND

- O LOCATION
- ⊙ RIG
- ⊕ DRILLING
- ⊛ GAS WELL
- OIL WELL
- ⊖ SMALL OIL WELL
- ⊛ DRY HOLE
- ⊛ DRY SHOWING OIL
- ⊛ DRY SHOWING GAS
- ⊖ ABANDONED LOCATION
- ⊛ ABANDONED GAS WELL
- ⊖ ABANDONED OIL WELL

NOTE: Below make tracing from map, (when no map is obtainable make sketch) showing farm, center of section, this location with measurements and also wells, dry holes, or other locations in the vicinity of this location. Make copy to keep for reference and send original to Columbus office.



REMARKS: COMPLETED CORE TEST.

SIGNED

G.H. Bell

Superintendent or Foreman.