



Western Michigan University
ScholarWorks at WMU

Legacy Scout Tickets from Pure Oil Company

8-20-2021

MGRRE_PureOilScoutTickets_Donovan, F._1_21081050330000

MGRRE

Western Michigan University

Follow this and additional works at: <https://scholarworks.wmich.edu/pure>



Part of the Geology Commons

WMU ScholarWorks Citation

MGRRE, "MGRRE_PureOilScoutTickets_Donovan, F._1_21081050330000" (2021). *Legacy Scout Tickets from Pure Oil Company*. 3918.

<https://scholarworks.wmich.edu/pure/3918>

This Document is brought to you for free and open access via ScholarWorks at WMU. It has been accepted for inclusion in Legacy Scout Tickets from Pure Oil Company by an authorized administrator of ScholarWorks at WMU. See the National Digital Catalogue - Science Base Catalogue for more collections submitted by MGRRE.



MGRRE_PureOilScoutTickets_Donovan, F._1_21081050330000

API 21081050330000

Permit Number 5033

Lease Name Donovan, F.

Well Number 1

County Kent

Township 08N

Range 09W

Section 4

2021 DEQ or Pure co_name Comstock, William A. Trustee

Pure Number 40

Latitude 43.10652

Longitude -85.37649

The Pure Oil Company
THE PURE OIL COMPANY

COMPLETION RECORD OF WELLS DRILLED BY OTHER OPERATORS

DATE May 26, 1938

LOCATION REPORT

No. 40

STATE Michigan COUNTY Kent -DIST. Grattan TWP. Grattan SEC. 4 TOWN 8 N RANGE 9 W

WELL No. 1 (SERIAL No. 40) FARM F. Donovan ACRES

NAME OF STREAM OR WATERS QUADRANGLE SW-NE-SE

OPERATOR William A. Comstock, Tr. Map Grattan Township, Kent County

330 330 Feet from North Line of Farm

" " East " " "

" " South " " "

330 330 " " West " " "

990 990 Feet from North Line of Section 1/4

990 990 " " East " " "

" " South " " "

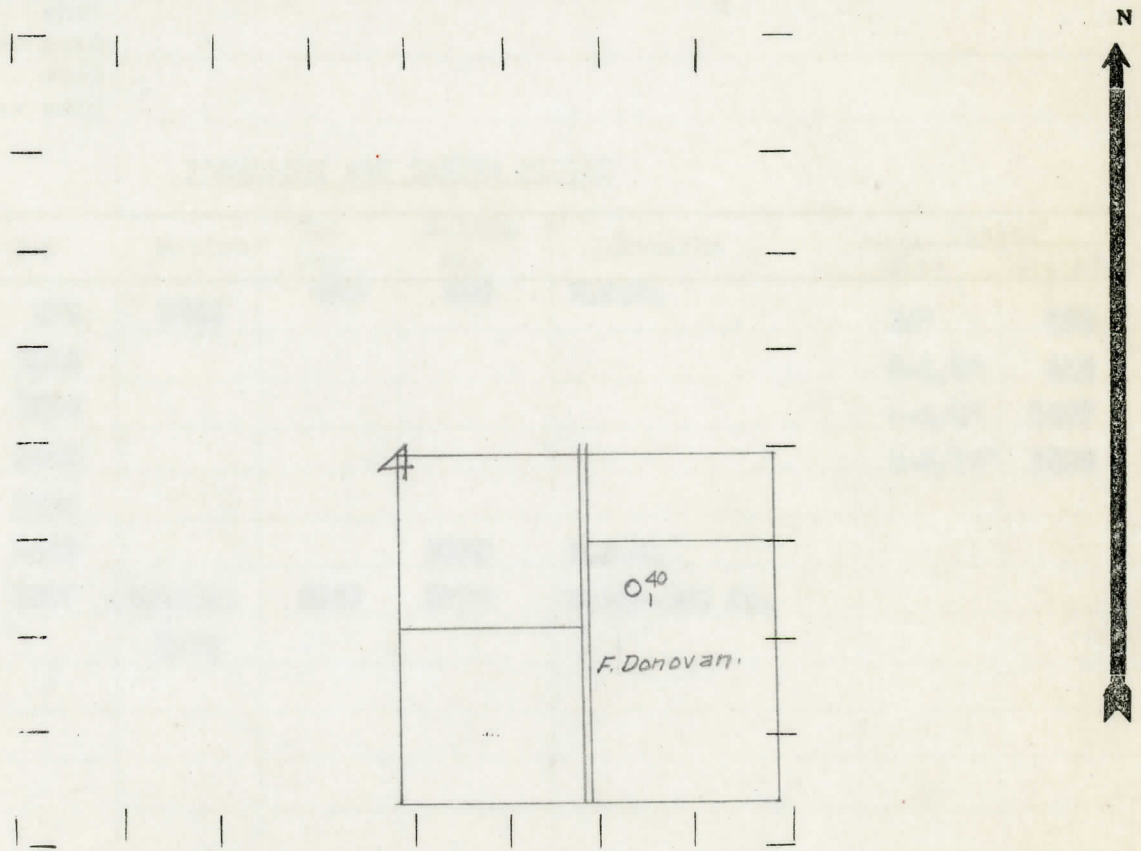
" " West " " "

Grattan - Kent

LEGEND

- LOCATION
- ⊕ RIG
- ⊕ DRILLING
- ☀ GAS WELL
- OIL WELL
- ⊕ SMALL OIL WELL
- ⊕ DRY HOLE
- ⊕ DRY SHOWING OIL
- ☀ DRY SHOWING GAS
- ⊕ ABANDONED LOCATION
- ☀ ABANDONED GAS WELL
- ⊕ ABANDONED OIL WELL

NOTE: Below make tracing from map, (when no map is obtainable make sketch) showing farm, center of section, this location with measurements and also wells, dry holes, or other locations in the vicinity of this location.



REMARKS:

SIGNED

R. L. Yeager
Superintendent or Foreman

Michigan Producing Division

Date September 8, 1938 No. 40
 State Mich. County Kent Dist. _____
 Twp. Grattan Sec. 4 Twp. 8 N Rge. 9 W
 Well No. 1 (Serial No.) _____
 Well No. 1 (County) 40 Farm F. Donovan Acres _____
 Operator Wm. A. Constock, Trustee Information secured By Scouting Department
 Date well started 5-24-38 Date well completed 9-1-38 Elevation 877.1

PRODUCTION RECORD

1st 24 hours natural Dry Hole
 2nd 24 hours natural _____
 Date of shot _____ No. of quarts _____ From _____ to _____ From _____ to _____
 Date of acid _____ No. of gallons _____
 shot _____
 1st 24 hours after acid _____
 shot _____
 2nd 24 hours after acid _____

FORMATION AND CASING RECORD

Formation	Top	Bottom	Top Pay	Bottom Pay	Remarks	Casing	
						Size	Set at
Red Rock	875	1042	490	510	H.F.W.	10"	364
Sunbury	1945					8-1/4"	418
Berea	1990					6-5/8"	1087
Antrim	2030					5-3/16"	2898
Traverse Form.	2450						
Traverse Lime	2460			2530	H.F.W.		
Dundee	2897	(Sample)	2965	2970	Water-250 ft.		
Total Depth		2970					

Remarks _____

Signed D. C. Shackelford